

Newspaper
HQ

Carriage
House

Showroom

Office Tower



Architectural Woodwork Institute

design solutions

Spring 2019 | \$6.25



آموزشگاه انعکاس منبع جدیدترین اطلاعات، مقالات و دوره‌های آموزشی دکوراسیون داخلی

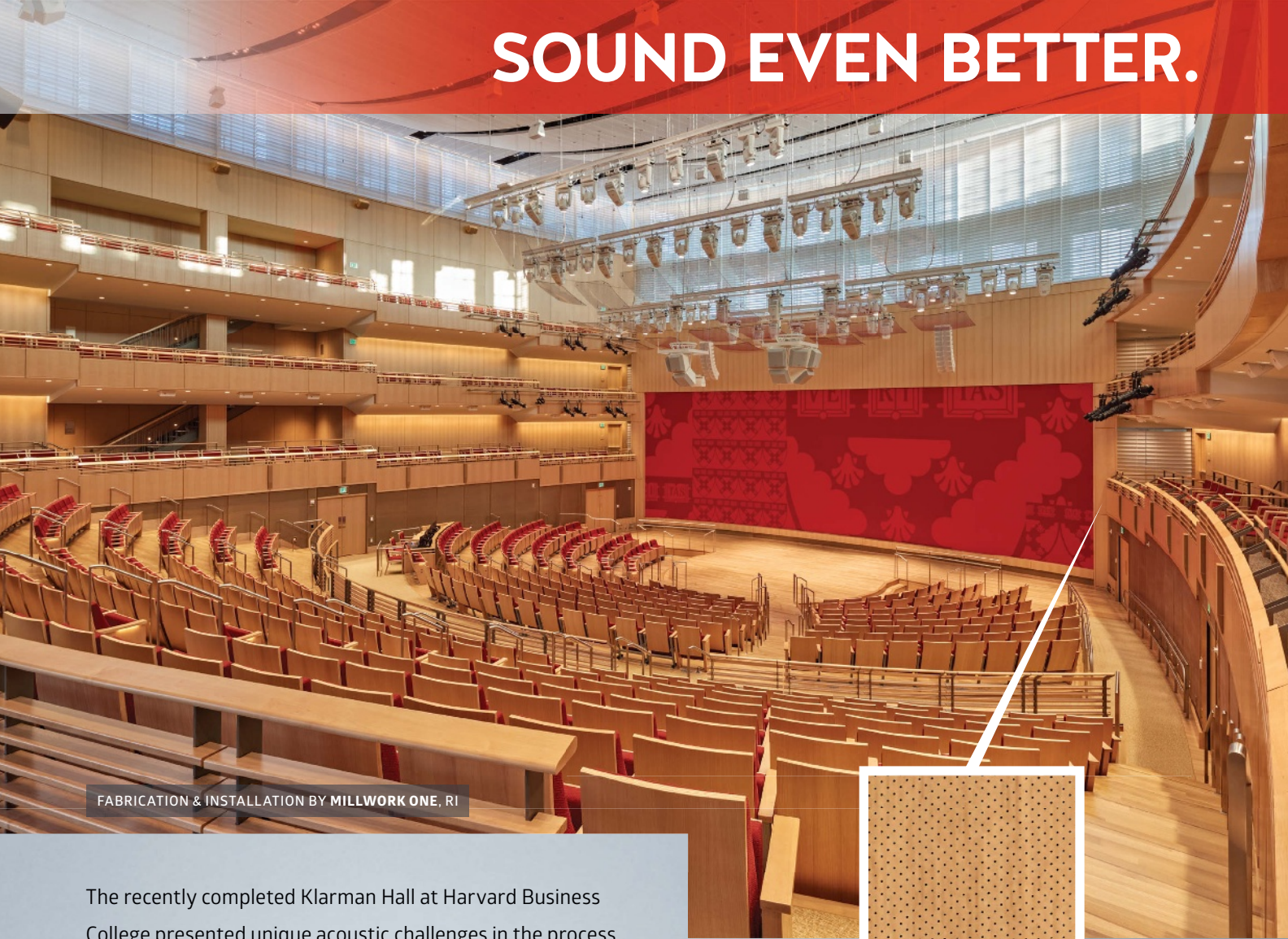
 Enekas.Academy

 Enekas.Academy

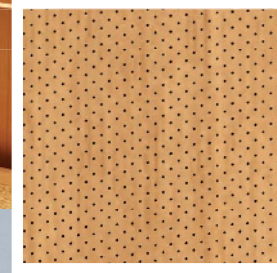


WE MAKE BRILLIANT IDEAS...

SOUND EVEN BETTER.



FABRICATION & INSTALLATION BY MILLWORK ONE, RI



The recently completed Klarman Hall at Harvard Business College presented unique acoustic challenges in the process of replicating the intelligibility and engaging ambiance found in the smaller space of most typical lecture halls.

SoundPly Acoustic Panels were uniquely suited for the job, by flawlessly satisfying the **specified, blueprint matched panel** requirements while providing **uncompromised, exceptionally high sound absorption**.

Acoustically-tuned .5mm wide x 2mm deep micro-perforations are key to providing significantly better sound absorption than any other acoustic panel.

SOUNDPLY®

THE WORLD'S QUIETEST ACOUSTIC PANELS

learn more at www.soundply.com

آموزشگاه انعکاس منبع جدیدترین اطلاعات، مقالات و دوره‌های آموزشی دکوراسیون داخلی

 Enekas.Academy

 Enekas.Academy



NAVIGATE THE TWISTS AND TURNS

For over 20 years, TradeSoft's innovative estimating and job management software has set the standard for eliminating bottlenecks, improving decision making, reducing costs, and increasing profitability.

Our leading edge technology transforms companies by integrating core business functions into one cohesive system.

TradeSoft can help you better navigate the twists and turns of daily operations.

- Powerful Estimating
- Seamless Job Management
- Accurate Job Costing
- Commitment to Excellence



TradeSoft INC.

FRONT TO BACK - We've got you COVERED™

Request a free demo!

www.tradesoftinc.com

آموزشگاه انعکاس منبع جدیدترین اطلاعات، مقالات و دوره‌های آموزشی دکوراسیون داخلی

 Enekas.Academy

 Enekas.Academy





Make every project a stunning success

At Precision Veneer, we create strong, long-lasting relationships with our clients. As one of North America's leading manufacturers of wood veneer panels, we produce quality veneer for the most challenging commercial, residential and retail projects.

We take pride in the close connections we build, listening to your needs, exceeding your

expectations and saving you both time and money on the jobsite. We believe it is insightful understanding and collaboration that makes every project a stunning success.

For information on how we can enhance your next project, **call 877-768-5512** or visit **precisionveneer.com**.

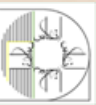


**PRECISION
VENEER**

آموزشگاه انعکاس منبع جدیدترین اطلاعات، مقالات و دوره‌های آموزشی دکوراسیون داخلی

 **Enekas.Academy**

 **Enekas.Academy**





New products news
P54

Journal of the  Architectural Woodwork Institute

Springdesign solutions



16

NEW EDITION.

Iconic Chicago Tribune newspaper moves into larger, modern headquarters.



28

FAR EAST.

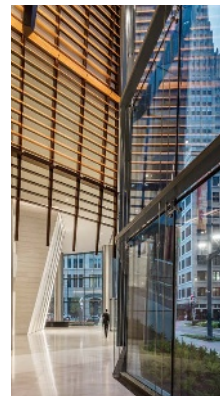
Remodeled Massachusetts carriage house transformed into an exotic retreat.



34

DARK PEARL.

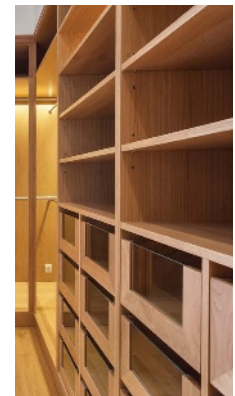
Showroom kitchen in Merchandise Mart blends art and function.



40

TEXAS TOWER.

Houston's newest office building showcases Eucalyptus, Basswood and reclaimed Walnut.



50

NEW CASEWORK STANDARD.

The newest in AWI's suite of standards addresses new applications.



STILES | HC

A HOMAG COMPANY

Providing solutions that help manufacturers build a better tomorrow.



Machinery



Engineering



Technical Support



Service



Parts



Software



Tooling



Rebuild



Leasing



Training

www.stilesmachinery.com

13
54
57
69
71

Departments

CORNERSTONE

PRODUCT SHOWCASE

AWI MANUFACTURING MEMBERS

AD INDEX

AWI SUPPLIER MEMBERS

AWI Officers:

PRESIDENT

Mike McNulty
Lutz Woodworks, LLC
Wylie, TX

PRESIDENT ELECT

Tyler Cerny
Strata Design
Traverse City, MI

VICE PRESIDENT

Sebastien DesMarais
Hollywood Woodwork, Inc.
Hollywood, FL

TREASURER

Skip Heidler
Heidler Hardwood Lumber Co.
Chicago, IL

IMMEDIATE PAST PRESIDENT

Bruce Spitz
Classic Millwork & Products
El Paso, TX

Magazine Staff:

Editor: Elaine M. Ferri
Editor in Chief: Philip Duvic

ADVERTISING COORDINATOR

Cheryl Stratos
(703) 212-7737 adsales@awinet.org

ART DIRECTOR

Josiah Lewis

PROJECT MANAGER

Katie Allen

Copyright © 2019 by the Architectural Woodwork Institute 46179 Westlake Dr., Suite 120 Potomac Falls, VA 20165 All rights reserved. Reproduction without permission is prohibited.

Cover: After nearly a century in its namesake tower, the Chicago Tribune newspaper headquarters relocated to a 150,000-square foot mid-century office building. The flexible new space is a functional workplace distinctive to the paper's unique history and fit for today's fast-paced world of publishing. See story, page 16.

designsolutions

(ISSN 0277-3538) is published quarterly by the Architectural Woodwork Institute, 46179 Westlake Drive, Suite 120, Sterling, VA 20165. Periodicals postage paid at Potomac Falls, VA and additional mailing offices. Postmaster: send address changes to **designsolutions**, 46179 Westlake Drive, Suite 120, Potomac Falls, VA 20165. Address subscription correspondence to Design Solutions. Subscription price: \$25/year.

Editorial and advertising inquiries should be addressed to:

designsolutions
46179 Westlake Drive, Suite 120, Potomac Falls, VA 20165
Phone (571) 323-3636,
Fax (571) 323-3630.
E-mail pduvic@awinet.org.
Web: awinet.org

Opinions expressed in articles are not necessarily those of the Architectural Woodwork Institute. Publication of advertising does not imply endorsement of products/services. All advertising copy is subject to the approval of the publisher; publisher reserves the right to reject advertising. Unsolicited editorial materials must be accompanied by sufficient return postage. Publisher reserves the right to reject editorial copy.

The magazine assumes no responsibility for loss of or damage to such material. Any material accepted is subject to such revision as is necessary in our sole discretion to meet the requirements of this publication. Material published in *Design Solutions* remains the property of the magazine. No material, nor parts thereof, may be reproduced or used out of context without prior approval of and proper credit to the magazine.





Zepsa Stairs

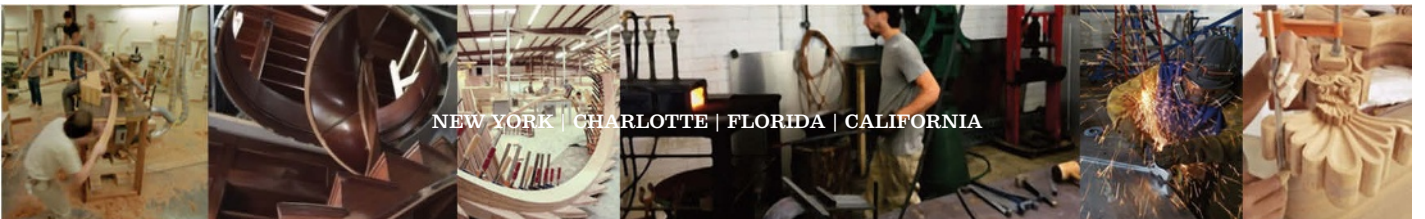


From classical to contemporary and estate residential to monumental commercial, Zepsa Stairs is America's finest builder of exquisitely complicated sculptural stair work. With a 40 year reputation of unparalleled service and execution, please allow us to be part of your next project.

Call us to help you with design and budget development, engineering, handcrafted fabrication, and expert installation.

The finest staircases handmade for you in the European Zepsa family tradition by America's finest craftsmen.

zepsa.com



NEW YORK | CHARLOTTE | FLORIDA | CALIFORNIA

آموزشگاه انعکاس منبع جدیدترین اطلاعات، مقالات و دوره‌های آموزشی دکوراسیون داخلی

 **Enekas.Academy**

 **Enekas.Academy**



DRAFTING & ENGINEERING

within Architectural Woodworking Industry

adservco group®

- ◆ A COMPANY SPECIALIZING IN ARCHITECTURAL WOODWORK DRAFTING & ENGINEERING
- ◆ 17 YEARS EXPERIENCE WORKING WITH AMERICAN PRIME WOODWORKING COMPANIES
- ◆ OVER 140 SKILLED ENGINEERS
- ◆ AWI MEMBER AND SPONSOR SINCE 2006



www.adservco.com
adservco@adservco.com



Member of:
AWI ARCHITECTURAL
WOODWORK
INSTITUTE

Manufacturer of Hardwood & Softwood Plywood



Specializing in high quality products used in high-end cabinetry, fine furniture, architectural millwork and store fixtures - Standard, Architectural, Custom Cuts & Layouts.

For the Exclusive Dealer nearest you, call the professionals at PRO-PLY for plywood's guaranteed to satisfy the most discerning woodworking companies.

PRO-PLY
CUSTOM PLYWOOD INC.

Tel: 905-564-2327
Toll Free: 1-877-469-9663
Fax: 905-564-2330

1195 Clark Blvd.
Brampton, Ontario L6T 3W4
www.proply.com



آموزشگاه انعکاس منبع جدیدترین اطلاعات، مقالات و دوره‌های آموزشی دکوراسیون داخلی

Enekas.Academy

Enekas.Academy



AkzoNobel



Over the years we've learned that stability has distinct advantages

Our people are one of our greatest assets. The many years that our representatives and distributors have been with our brand provides the continuity of knowledge and experience that helps to ensure the success of our customers.

Contact your nearest Chemcraft® distributor to find out how our deep experience and innovative products can help take your business to the next level.

Visit chemcraft.com for more information and to locate your nearest distributor

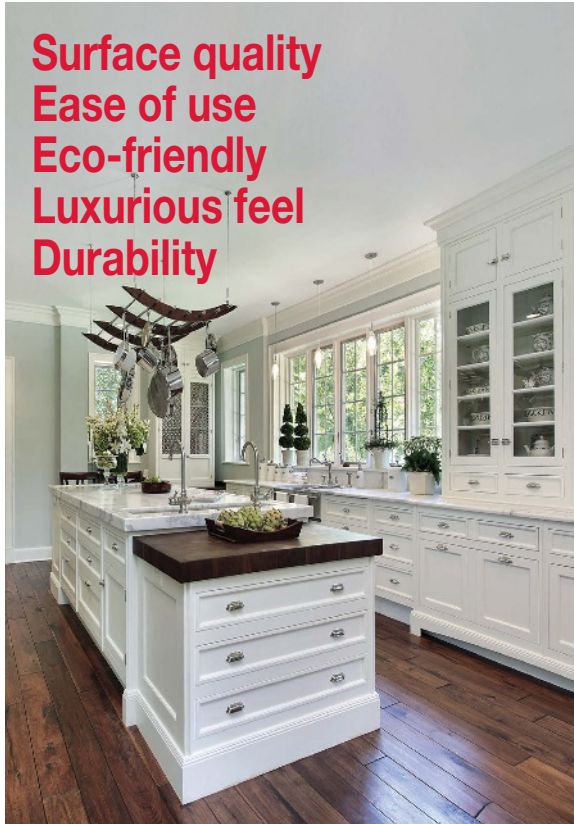
آموزشگاه انعکاس منبع جدیدترین اطلاعات، مقالات و دوره‌های آموزشی دکوراسیون داخلی

 Enekas.Academy

 Enekas.Academy

04154_030818

Surface quality
Ease of use
Eco-friendly
Luxurious feel
Durability



Milesi 275 VOC Compliant Polyurethane Solutions

The latest innovation in air quality compliant wood coatings, available in white and clear versions

ivm Group
coatings & polymers technologies

www.milesi.com

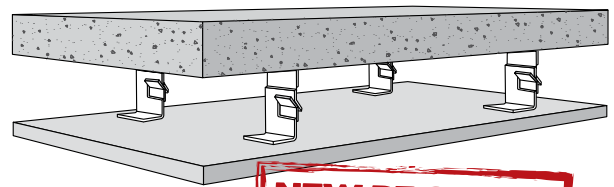
M
milesi
wood coatings



MONARCH
METAL FABRICATION

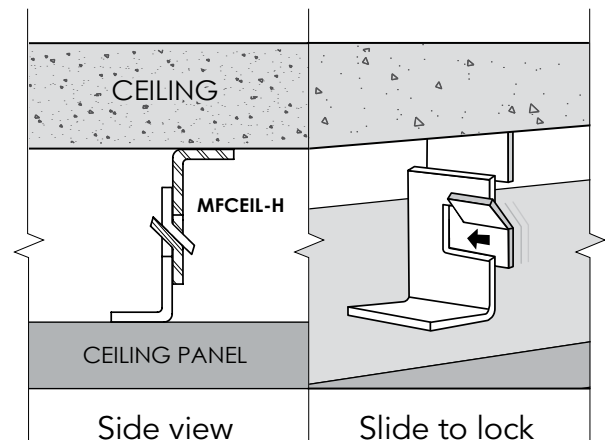
Monarch Ceiling Mounting Clips

Interconnecting clips for mounting ceiling panels restrict movement vertically and horizontally



NEW PRODUCT

Fabricated in 16 Ga.
Galvanized Steel



CALL TO ORDER

(631) 750-3000

1700 Ocean Ave Ronkonkoma, New York 11779

www.monarchmetal.com

آموزشگاه انعکاس منبع جدیدترین اطلاعات، مقالات و دوره‌های آموزشی دکوراسیون داخلی

 Enekas.Academy

 Enekas.Academy





*"It's about personal relationships.
When you use Federated
Insurance, you're dealing
with someone who has your
best interest at heart."*

Greg Lutz
Lutz Woodworks, LLC

It's Our Business to Protect Yours
FEDERATED
INSURANCE®



Federated Mutual Insurance Company • Federated Service Insurance Company* • Federated Life Insurance Company
Owatonna, Minnesota 55060 | Phone 507.455.5200 | www.federatedinsurance.com

*Not licensed in the states of NH, NJ, and VT. © 2015 Federated Mutual Insurance Company

آموزشگاه انعکاس منبع جدیدترین اطلاعات، مقالات و دوره‌های آموزشی دکوراسیون داخلی

 Enekas.Academy

 Enekas.Academy



NEW AWI STANDARDS NOW AVAILABLE.

Four New Standards Now in Effect

On March 15, 2019, four new AWI Standards officially took the place of their respective sections of the *Architectural Woodwork Standards, Ed. 2 (AWS2)*. This means that projects bid on or after March 15 are subject to the new standards, plus applicable remaining sections of the AWS2.

Projects bid prior to March 15 are subject to the AWS2 as the standard of reference. For projects where the AWS, Edition 2, 2014 is referenced in the project specifications, the standard of reference remains the AWS Edition 2, 2014 regardless of bid date.

New Sections

- ▶ **ANSI/AWI 0620 – FINISH CARPENTRY/INSTALLATION** – 2018 standard replaces the installation portions near the end of each respective section of the AWS2.
- ▶ **AWI 100 – SUBMITTALS** take the place of the requirements in Section 1 of the AWS2.
- ▶ **AWI 200 – CARE & STORAGE** replaces the requirements set forth in Section 2 of the AWS2.
- ▶ **AWI 300 – MATERIALS** replaces Sections 3 and 4 of the AWS2.

Download these standards at www.awinet.org under the “store” tab. A Redline Edition of the AWS2 with watermarks denoting the appropriate standard to follow is also available.

For assistance, AWI members may contact the AWI National Testing Center at **229-389-2544** or help@awinet.org.



آموزشگاه انعکاس منبع جدیدترین اطلاعات، مقالات و دوره‌های آموزشی دکوراسیون داخلی

YOU WOULDN'T LET THE FAUCET RUN....

You wouldn't let your faucet run all day so it is ready when you need a quick drink.

Many businesses are throwing **THOUSANDS** of dollars down the drain.

SEE THE DIFFERENCE

Imagine a unit that knew when your employees were working, or on a break and adjusted accordingly. Imagine the difference in energy & cost savings.

By combining German engineering and technology with sustainable design, Hocker Products **will** make the difference for your company.

HÖCKER
NORTH AMERICA

Always one idea ahead!

60-70% Energy Savings

- Sustainable Growth
- Increased Profits
- Global Impact
- Competitive Advantage

LEARN MORE

www.hockeramerica.com

CONTACT US

Ben the Dust Guy 616.881.3328
ben@hockeramerica.com

MAGNAMAX® H₂O.

Water-based coating. Solvent-based results.

Before we put the MAGNAMAX® name on a water-based product, it had to meet our high standards and yours. MAGNAMAX® H₂O applies effortlessly, offers excellent durability, and delivers the warm amber appearance that enhances the wood's natural grain.

We know you've tried waterborne finishes before. But you've never tried anything like MAGNAMAX H₂O.

Visit magnamaxh2o.com



M.L. CAMPBELL
WOOD FINISHING SYSTEMS

PARTNER WITH DAI EK FOR CONFERENCE TABLES



RELY ON DAI EK FOR CUSTOM VENEER AND FURNITURE FABRICATION.

PARTNER WITH DAI EK TO ACCOMPLISH DIFFICULT, TECHNICAL AND LARGE SCALE FURNITURE PROJECTS. WE WORK DIRECTLY FOR YOU, BEHIND THE SCENES TO YOUR SPECIFICATIONS AND WE SHIP ANYWHERE TO MEET YOUR DEADLINE. LET DAI EK QUOTE YOUR NEXT PROJECT.



40835 MOUND RD.
STERLING HEIGHTS, MI 48310
WWW.DAI EKWOODWORKS.COM



586 268 1144

آموزشگاه انعکاس منبع جدیدترین اطلاعات، مقالات و دوره‌های آموزشی دکوراسیون داخلی

Enekas.Academy

Enekas.Academy



We put the **custom** in **customer** service!



Our customers are as unique as our drawers and every order is customized to fit their needs. Whether it's a specific wood type, size or shape, at CCF we put our customers first, from the beginning of the project to the end...
Now that's custom customer service!



4716 Rt. 66 Apollo, PA 15613 800.581.3683 phone: 724.727.2045 fax: 724.727.3015

www.ccfdrawers.com



WHERE THE FRONT RUNNERS MEET.

VT INDUSTRIES ACQUIRES EGGERS INDUSTRIES



© 2018 VT Industries, Inc. All rights reserved

VTDdoors.com 1-800-827-1615 (ext. 10512)

آموزشگاه انعکاس منبع جدیدترین اطلاعات، مقالات و دوره‌های آموزشی دکوراسیون داخلی

 Enekas.Academy

 [Enekas.Academy](https://www.instagram.com/Enekas.Academy)



VISION:

To be the global leader in architectural woodwork standards, related interior finishes, industry-specific education and networking opportunities.

cornerstone

Inside Info For Design And Construction Professionals

Latest Developments – AWI's New Industry Standards.

With the release of the upcoming new Standard clearly on the horizon, anticipation has been building on all fronts. AWI President Mike McNulty is one of many looking forward to this event, summing it up as follows: "For almost 60 years, AWI has been setting the standard for the architectural woodwork industry. In my 36-year industry career, countless times, I have sought guidance and information from both the *AWI Quality Standards* and the *Architectural Woodwork Standards* and have always come away impressed at the level of detail and clarity."



آموزشگاه انعکاس منبع جدیدترین اطلاعات، مقالات و دوره‌های آموزشی دکوراسیون داخلی

 Enekas.Academy

 Enekas.Academy



“AWI continues to set our industry’s standard by embarking on our industry-changing standards development program through the ANSI process. As a member of AWI’s Technical Committee, I am excited to participate in the new ANSI/AWI Standard’s development. As part of this committee, I experienced first-hand how the new AWI Standard is a total industry game changer for woodworkers, design professionals, and all stakeholders.”

Benefits to All

AWI believes our new Industry Standards:

- ▶ Will provide opportunities for manufacturers to innovate, leverage higher manufacturing efficiencies and achieve lower production costs;

- ▶ Generate opportunities for industry stakeholders to access the industry’s manufacturing and supply chain; and
- ▶ Must be developed through industry-wide input, consensus agreement and their vetting by producers, users and general interest groups.

AWI’s new standards are easy to understand and practical in their application. The new AWI Standards provide manufacturers and suppliers with means to access the architectural woodwork marketplace. AWI’s Standards writing relies on broad-based industry input, openness and transparency which is verified through the rigorous ANSI audit process.

Consensus-based Voluntary Standards

Consensus-based standards provide great value to all users, including avoiding a process that potentially could be dominated by one or more economically interested parties, and to ensure that all parties with an interest in our industry and AWI’s new Standard have an equal opportunity to participate in the development process. ANSI provides independent third-party oversight to ensure that the approved Standards development process is followed without impartiality.

AWI’s vision for a new Standard is to coordinate and utilize the CSI Master Format specification numbering for woodwork Standard sections. It would be impractical to seek industry wide approval for AWI’s entire collection of planned standard documents as individual sections are more efficiently updated than an entire collection of related documents. This provides greater flexibility and faster response to new industry innovations.

AWI 0641 Architectural Wood Casework Standard

AWI’s latest draft Standard is 0641, Architectural Wood Casework, a radically different approach to previous Casework Standards. Of key interest is the introduction of Casework Performance Duty Levels (1,2,3 and 4) that represent increasing load ratings for architectural casework performance.

Consensus-based



The familiar quality grade levels of Economy, Custom and Premium remain from previous casework standards, however these distinctions apply to the aesthetic appearance requirements for architectural casework. These two features allow design professionals to select a Performance Duty Level appropriate to the casework's intended function while having the latitude to select an appropriate exterior appearance grade.

The AWI Technical Committee is providing its Draft 0641 Architectural Wood Casework Standard for public and canvas group comments. If you would like additional information about the Draft AWI's 0641 Casework Standard, contact AWI's Technical Director Ashley Goodin by email at agoodin@awinet.org.

ased

SOLUTIONS

BIESSE.COM

SOLID WOOD TECHNOLOGY.

We deliver dependable solutions for manufacturing solid wood in a wide range of sizes and configurations. Our innovative solutions are designed to meet your requirements and guarantee a high quality finish under any working conditions.

50 YEARS
BIESSE GROUP

BIESSE

CORRECTION

The name of the architect quoted in the McLaren Health System project in the Winter 2019 issue is Amanda Gorning AIA. Her name was incorrectly spelled and Design Solutions apologizes to Ms. Gorning.



The Chicago Tribune newspaper has a stellar history. From its beginnings, the newspaper pledged to be a good citizen and a standard-bearer for innovative journalism. During its formative years, it was a leading anti-slavery newspaper, and instrumental in the election of President Abraham Lincoln. In 1881, the Tribune reinvigorated the city after the Great Chicago Fire, helping to lure business to the rebuilt city.

Chicago Tribune



آموزشگاه انعکاس منبع جدیدترین اطلاعات، مقالات و دوره‌های آموزشی دکوراسیون داخلی

 Enekas.Academy

 Enekas.Academy



Iconic
newspaper
moves into
larger, modern
headquarters.

New Edition.

آموزشگاه انعکاس منبع جدیدترین اطلاعات، مقالات و دوره‌های آموزشی دکوراسیون داخلی

 Enekas.Academy

 Enekas.Academy





آموزشگاه انعکاس منبع جدیدترین اطلاعات، مقالات و دوره‌های آموزشی دکوراسیون داخلی



 Enekas.Academy

 Enekas.Academy



The Tribune introduced several advancements that would irrevocably change newspapers: a thick Sunday edition full of features, analysis and advertising; the first foreign news service staffed by Americans; the first paper to maintain a reporting staff on Capitol Hill; and revolutionized the look of papers by using three- and four-color printing and publishing the first color photograph.

After nearly a century in its namesake tower, the Tribune relocated to a 150,000-square foot space in Prudential Plaza, a mid-century office building. The flexible new space gives the newspaper and digital content headquarters a functional workplace distinctive to their unique history and fit for today's fast-paced world of publishing.

at a glance

AWI MANUFACTURING MEMBER:

Inter Ocean Cabinet Company

LOCATION:

Elmhurst, Illinois

ESTABLISHED:

1897

The relocation project was handled by the architectural design firm Eastlake Studio. Architectural woodwork was fabricated and installed by Inter Ocean Cabinet Company, an AWI member firm located in Elmhurst, Illinois. The project took approximately 18 months, from planning to move-in.

Open Plan

The new headquarters features an open plan that encourages collaborative work practices and allows for all the needs of a modern media center -- a state-of-the-art breaking newsroom, test kitchen, personal lockers and adjustable-height desks. Street-facing conference rooms reflect the core values of transparency and honesty, and a monumental stair—a major architectural addition to the building and the largest woodwork element—creates a strong statement of urban permanence.

“This project was particularly poignant to Eastlake because our studio was located above their offices in the Tribune Tower for 30 years, and in that time, we worked with them on several smaller renovation projects,” points out Eastlake’s Mia DiMeo.

Design elements that link to the newspaper’s past include quotes about the freedom of the press in the entrance, etched glass recreations of historic front pages and modular arts wallcovering panels that reference typography and the history of publishing in the elevator lobbies. Supplementary materials include images, an infographic, space plans, an elevation of the stair and the full detailed project story.



“Our clients rely on us to make them look good by beating project schedules and budgets while executing the finest architectural details.”

– Chris Farrell

“Early in the design process, the vertical series of floors rising from street level were envisioned as a hive of cultural production, with the core artery being a monumental staircase,” explains DiMeo. “The wood steps, made from reclaimed urban Oak trees sourced around Chicagoland, are more than just a dramatic path from the ground to the creative areas—they provide a flexible, dynamic place for communication with more than 1,000-square-feet of stadium seating facing a projection of the 24-hour news cycle.”

Wood Elements

“Working with Inter Ocean, we planned and executed the monumental stair and many other bold woodwork accents including framing of the mail room, built-in bookshelves in the executive conference room and a wood surround display for etched glass front pages, in the elevator corridor,” she continues.

According to Inter Ocean’s Chris Farrell, the woodworking firm produced the following for the project: paneling and wood plank wall cladding around the monumental stair; wood stair treads and risers, wood surround in the mail/print room; reception desk; built-in woodwork elements in the conference room; main stadium seating on floors 1-4; mezzanine level pantry and HUB pantry under the stairs; wood surround display with back lit etched glass in corridor; executive floor reception desk; custom cabinetry and islands with quartz tops on all floors and decorative panels in lobbies on three floors.

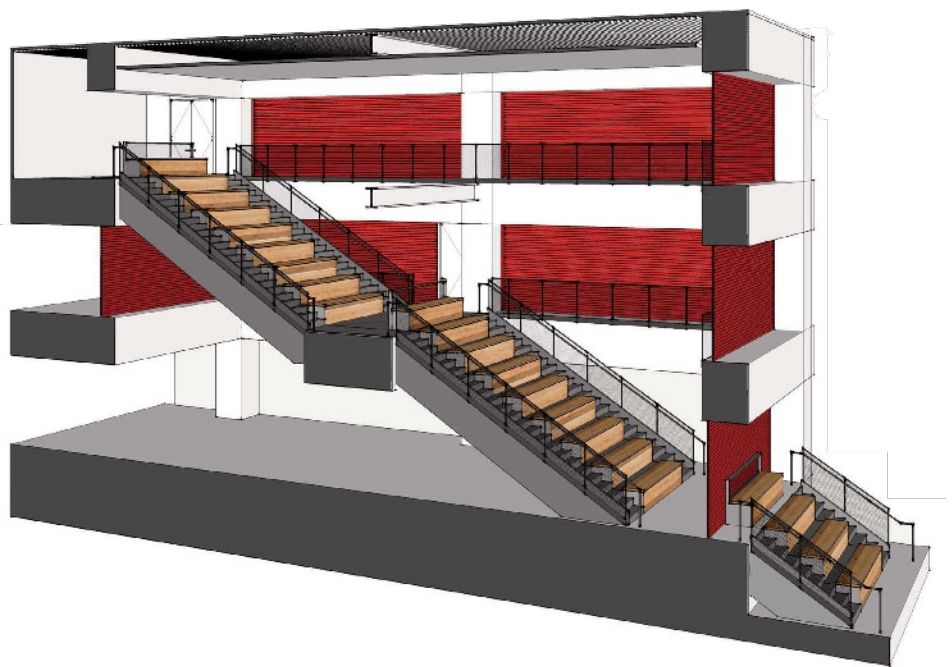


آموزشگاه انعکاس منبع جدیدترین اطلاعات، مقالات و دوره‌های آموزشی دکوراسیون داخلی





In addition to the reclaimed Oak on the stairs, plain sliced Oak and plain sliced Walnut were also used throughout the project. "A deep finish was used on the Oak to warm up the monochromatic space, and to contrast with the mirrored ceiling tiles and industrial steel and concrete elements of the stair," says DiMeo. The dark millwork also references the lobby of the historic Tribune Tower, former home of the Chicago Tribune.





آموزشگاه انعکاس منبع جدیدترین اطلاعات، مقالات و دوره‌های آموزشی دکوراسیون داخلی



 Enekas.Academy

 Enekas.Academy





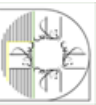
“Eastlake Studio suggested including large millwork panels on the stair and surrounding it, in part because they knew it would bring warmth to the high contrast, black and white

scheme we requested,” points out Lynne Allen of the Tribune. “We left a traditional space with traditional millwork and liked the modern take on wood detailing.”

Monumental Stair

The monumental stair, spanning four floors with more than 1,000 square feet of stadium seating, is particularly noteworthy, says

Farrell. DiMeo agrees, noting that the design firm by far considers the stair a major achievement, and are excited about how it turned out.





آموزشگاه انعکاس منبع جدیدترین اطلاعات، مقالات و دوره‌های آموزشی دکوراسیون داخلی

 Enekas.Academy

 Enekas.Academy





It was a technical challenge, she explains, as the Chicago building code requires implementation of an atrium exhaust system when connecting more than two floors with an open stair. Eastlake Studio approached the Chicago Building Department Committee on Standards and Tests with an alternative approach for achieving the code's objectives. Instead of an atrium exhaust system, nine automated fire shutters were proposed - the largest of which is 27 ft x 8 ft, along with enhanced smoke detection and additional alarm devices.

An additional challenge was achieving accessibility; at the top of each flight of stairs a final bleacher seat is located above the landing so that a disabled person can transfer to the bleacher if desired without traversing steps. These accessible bleacher seats also function as a guard at each landing.

"The stair detailing was very tricky, and you would not expect it, but as you consider the transitions at the edges, you can appreciate the thought required," adds Allen.


Also presenting a challenge, says DiMeo, was the editorial boardroom "as the user group would have preferred to have picked up the traditional paneled boardroom intact and transported it to their new home. Financially and practically that wasn't possible nor was copying it in the new location. The solution was to reference the paneled cabinetry look, but with transitional detailing and an austere dark grey painted finish. For economy, operable components were rendered in painted wood and stationary panels in painted drywall. The end result has the desired gravitas, but with a contemporary feel."

Solid Team

"We have a collaborative, trusting relationship with Inter Ocean, and have worked with them for many years. This is our biggest project together to date," she notes.

Farrell adds, "we've enjoyed collaborating with Eastlake for many years on projects large and small. In our experience, elaborate millwork projects like this are best executed when we are brought into pre-construction planning for budgeting, value engineering, feasibility assessments and detail coordination. Completing the project on time and within budget while honoring the design intent and quality

standards took coordinated efforts by everyone involved. The entire team was great to work with and collaborating with everyone to complete the project on time was rewarding for me and our entire staff."

Although not the end of the story, the new Chicago Tribune offices will continue to make headlines for years to come. 

PROJECT:
Chicago Tribune
Headquarters
Chicago, IL

PROJECT OWNER:
Chicago Tribune
Chicago, IL

WOODWORKER:
Inter Ocean Cabinet
Company
Elmhurst, IL

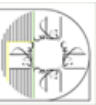
ARCHITECT:
Eastlake Studio
Chicago, IL

GENERAL CONTRACTOR:
Executive Construction, Inc.
Chicago, IL

PHOTOGRAPHERS:
Kendall McCaugherty,
Steve Hall
Chicago, IL
Hall + Merrick
Photographers
Chicago, IL



آموزشگاه انعکاس منبع جدیدترین اطلاعات، مقالات و دوره‌های آموزشی دکوراسیون داخلی



DON'T LEAVE QUALITY TO CHANCE.

AWI Quality Certified woodwork means peace of mind from start to finish.

Guaranteed quality, up front, matters in topline architectural projects. It means the mental freedom to focus on other job demands and zero worry about late inspection costs due to quality concerns.

AWI's Quality Certification Program (QCP) is an unrivaled industry standard for interior architectural woodwork. When clients see certified woodworking specs in your bid, they will have higher confidence in the quality of the workmanship, at a very small percentage of the overall contract cost.

Plus, AWI's expert inspectors work as an extension of your firm, serving as your dedicated "quality assurance team" to deliver on best industry practices.



Greater confidence, better product, more business.
Visit awiqcp.org for more information

آموزشگاه انعکاس منبع جدیدترین اطلاعات، مقالات و دوره‌های آموزشی دکوراسیون داخلی

 Enekas.Academy

 Enekas.Academy





Looking for
Architectural Metal
that Inspires?

**Over 30 Years of Expertise Creating and Supplying
Specialty Aluminum Trims and Extrusions**

Eagle Mouldings is your single source for custom architectural aluminum trims and extrusions. We can support your architectural millwork vision no matter the size of your project. At Eagle Mouldings our primary goal is to deliver personalized reliable service, high quality products, short lead times, all at a fair price.



800-888-2044
eagle-aluminum.com

Architectural Millwork • Store Fixture and Displays • Slatwall / Inserts • Z-Clips • Restaurant Environments • Custom / OEM Extrusions

GEMINI EVO

the evolution of coatings in progress

HYDRO-PURE® waterborne coatings are the definition of "GREEN". Formaldehyde free, HAPs free, extremely low VOC and no odor, while retaining the toughness and durability you demand.

HYDRO-PURE clears and whites are a safe and environmentally friendly solution for your wood coating needs!

proud members of:

AWI

visit us at:

for more about Gemini's EVO Hydro-pure series: 800.262.5710
or visit www.gemini-coatings.com

MB

M. BOHLKE CORP. **BAMBOO**
VENEER &
SOLID PANELS

Fairfield, OH
(513) 874-4400
mbvener.com

آموزشگاه انعکاس منبع جدیدترین اطلاعات، مقالات و دوره‌های آموزشی دکوراسیون داخلی

Enekas.Academy

Enekas.Academy



Far East.

Remodeled carriage house transformed into an exotic retreat.

آموزشگاه انعکاس منبع جدیدترین اطلاعات، مقالات و دوره‌های آموزشی دکوراسیون داخلی





The beauty and intrigue of the Far East inspired the owner of this Massachusetts carriage house to establish an artful and meditative personal retreat. Unique not only in appearance, this project was also unique in approach. With most new construction projects, the space usually dictates the design elements within, but on this project the client wanted real authentic Asian artifacts to be purchased first and then wanted the designers and woodworking team to design the space around those ancient objects.



at a glance

South Shore Millwork (SSM), an AWI member firm located in Norton, Massachusetts that fabricated and installed the architectural woodwork for the project, "was asked to take receipt of these purchased artifacts, sort through them, set them up in our shop, inventory every part and piece, then see what might work and where it may work best; a process that took three people roughly a month to complete," explains Gerald Whalen, senior project manager at SSM.

AWI MANUFACTURING MEMBER:

South Shore Millwork

LOCATION:

Norton, Massachusetts

ESTABLISHED:

1991

FACILITY:

80,000 square feet, solar-powered

EMPLOYEES:

80

Licensed QCP Manufacturer

Some of the items purchased and shipped from Asia in the container included; traditional portal openings, archways, doors, columns, carved panels, and several cabinets. Almost all these items were used in the final interior woodwork design in conjunction with new Teak, Mahogany, Walnut, and White Oak materials custom fabricated and installed by SSM.

Design of the carriage house was handled by architect Eric Inman Daum, AIA of Andover, Massachusetts and Anthony Catalfano Interiors, Boston.

For the project, South Shore Millwork constructed a custom bar using Asian artifacts imported from the Far East; a Buddha Teak drawer cabinet with custom carved fronts; window; door casings; crown mouldings; a new door made from carved parts of Asian wall panels; hand-carved portals; ceiling panels comprised of various wall panel parts; and a unique staircase made to have an ancient, historic look.



آموزشگاه انعکاس منبع جدیدترین اطلاعات، مقالات و دوره‌های آموزشی دکوراسیون داخلی





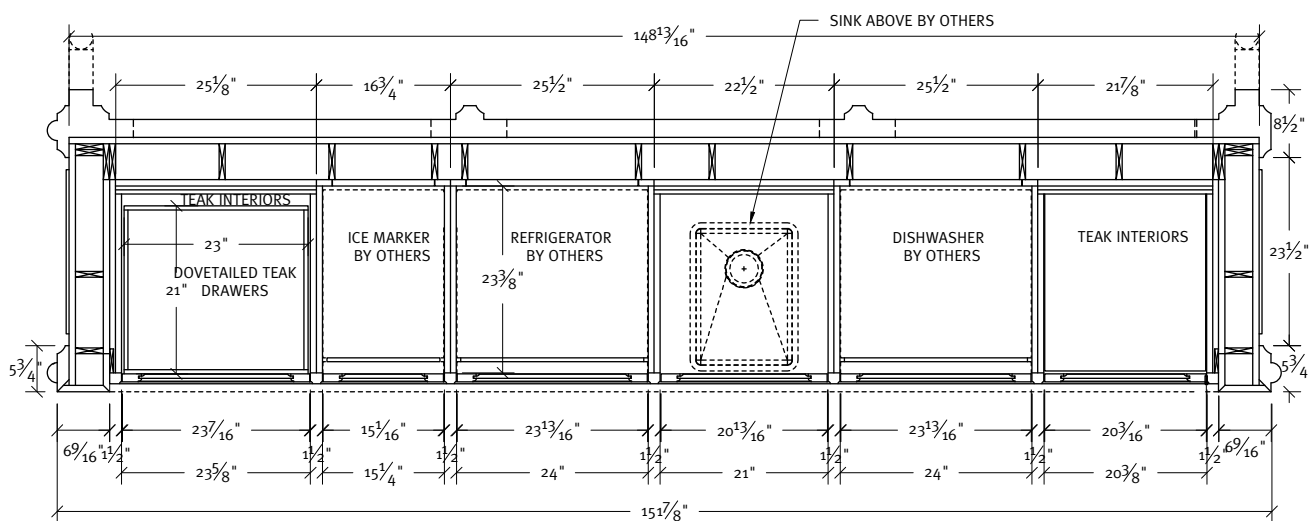
The Process

The process was a total collaboration between the owner, designers, contactor, and woodworker, notes Whalen. "SSM used conceptual hand sketches of the existing artifacts. placed them into certain design elements and

submitted them to the team for discussion. Ultimately a mutual agreement on what, where and why to use something was determined and an agreed upon design direction was set. SSM would eventually produce a full set of working shop drawings for fabrication."

Once an appropriate artifact and desired location were selected, they had to be altered, reworked, or in many cases, new replica pieces made to match the existing pieces. "This was most common on the existing artifact doors we received," says Whalen. "All the doors

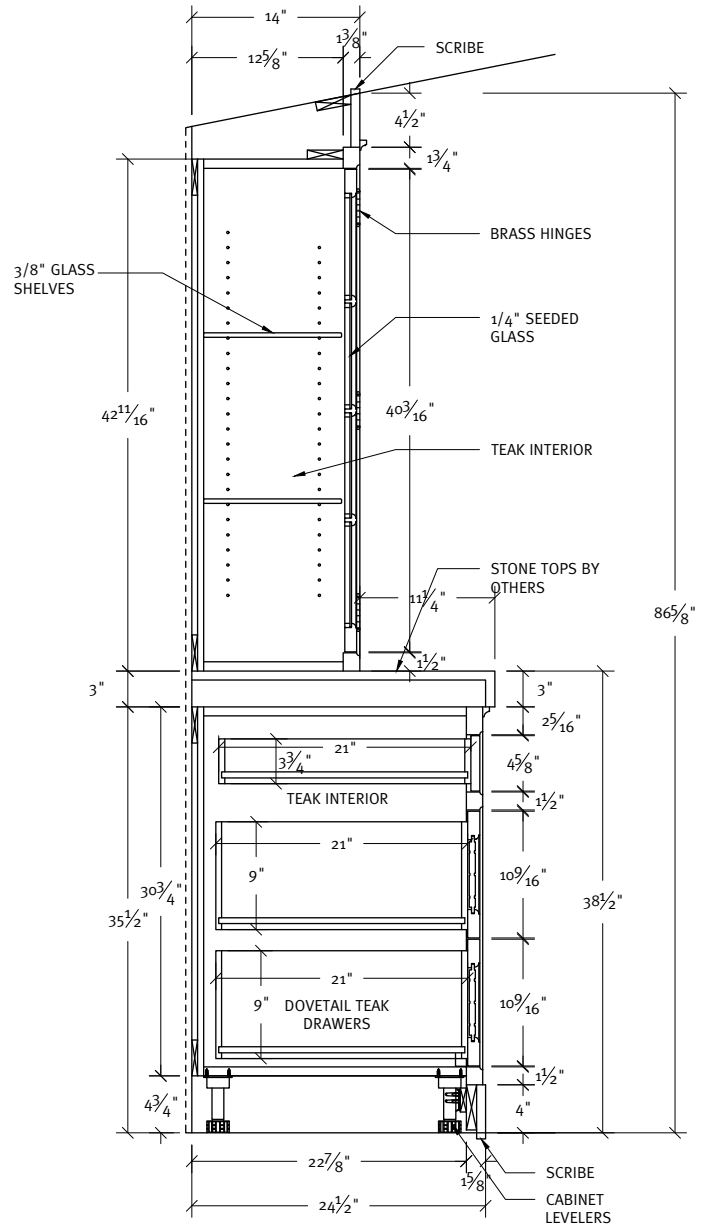
either had to be enlarged or remade altogether using parts and elements from the existing piece. This is where using a myriad of wood species, traditional woodworking techniques, and specialty finishes all played a role in the final formation of the 'new to look old' space."



PLAN SECTION
@ BAR

“ While we insist on incredible craftsmanship, we also offer outstanding customer service. We pride ourselves on providing personalized account management, never missing a deadline, and offering a lifetime commitment to our customers. ”

– Jeff Burton, Owner



SECTION @ BACK BAR

Whalen continues, “One of the hardest things on this project was keeping our fabricators and installers desensitized from performing their typical precise work to which they are accustomed, but rather creating new work that looked old, distressed, and imperfect. This was a challenge to their instincts and not an easy thing to do, but we ended up accomplishing our goal because everything turned out beautiful and really looks authentic.”





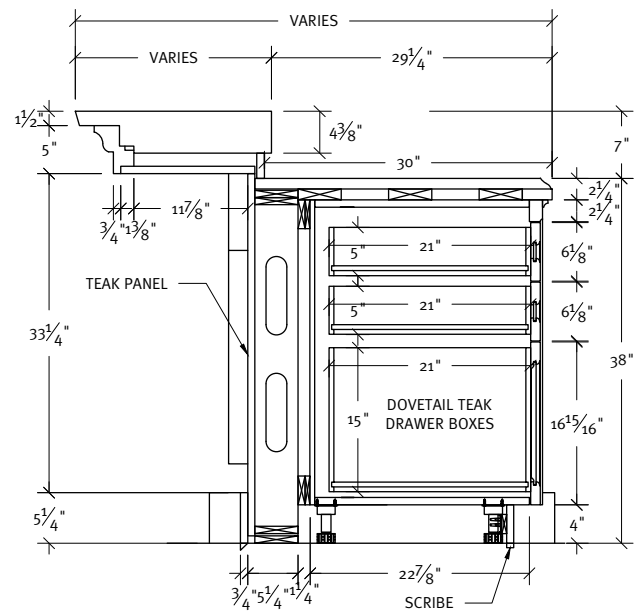
Although the entire project is very intricate in nature, Whalen says the bar and staircase were particularly intricate. "The challenge was utilizing the variety of artifacts in conjunction with new materials, blending them together to achieve our client's vision."

Great Team

"South Shore Millwork was the ideal partner for the design and development of the Indian-themed rooms of the carriage house," recalls architect Eric Inman Daum, AIA. "Though we had an overall design concept, Jeff Burton, Gerry Whalen and the team at South Shore integrated the antique Indian elements, newly fabricated

Asian millwork, and their own supplemental pieces to reimagine this exotic hideaway. They brought not just skilled woodworking, but designer's eyes to the repurposing of the antique pieces. The result was a truly collaborative dialogue; as a designer it is a pleasure to share a vision with such creative craftspeople and have it executed so brilliantly."

The teamwork on the project was seamless and visionary, adds Whalen. "Working with an extremely talented architect to create the visionary interior design and the look the client desired, was not only precise and perfect but also functional and comfortable." 



SECTION @ BAR

PROJECT:
Carriage House

WOODWORKER:
South Shore Millwork
Norton, MA

ARCHITECT:
Eric Inman Daum, AIA
Andover, MA

DESIGNER:
Anthony Catalfano Interiors
Boston, MA

GENERAL CONTRACTOR:
Kenneth Vona Construction, Inc.
Waltham, MA

PHOTOGRAPHER:
Greg Premru
Groton, MA

آموزشگاه انعکاس منبع جدیدترین اطلاعات، مقالات و دوره‌های آموزشی دکوراسیون داخلی



new Style Cabinets, Inc. (NSC), an AWI manufacturing member firm headquartered in Chicago, Illinois, wanted new showroom space at Chicago's Merchandise Mart to showcase its cabinetry and woodworking capabilities. The space was to be a complete room design. To accomplish this, NSC engaged its designers, Hubert Dzedzic and Piotr Przybylko, to create an amazing space.





Dark Pearl.

Showroom Kitchen Blends Art and Function.

آموزشگاه انعکاس منبع جدیدترین اطلاعات، مقالات و دوره‌های آموزشی دکوراسیون داخلی

 Enekas.Academy

 Enekas.Academy





at a glance

AWI MANUFACTURING MEMBER:

New Style Cabinets, Inc.

LOCATION:

Chicago, Illinois

ESTABLISHED:

2009

آموزشگاه انعکاس منبع جدیدترین اطلاعات، مقالات و دوره‌های آموزشی دکوراسیون داخلی

 Enekas.Academy

 Enekas.Academy





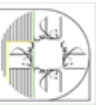
“The designers are a part of the New Style team which allowed for a productive and efficient working relationship,” explains NSC President Mike Tracz. “Because we are all located in the same office space, the communication was direct and instantaneous.”

The goal of the project, he continues, was to create a line of kitchens that would exemplify NSC’s craft and increase its brand recognition. “We’ve set out to create a kitchen design that emphasizes the warmth of wood and showcases the possibilities that can be achieved with today’s technology combined with the craft of woodworking.”

Dziedzic adds, “Our primary objectives were space planning, functionality, aesthetics and styling. Defining zones for prepping, cooking and entertaining as well as maximizing efficiency was a big part of space planning.”

“With our creative design capabilities, advanced technology and craftsmen’s dedication to perfection, we are able to craft any kind of wood product.”

– Mike Tracz, President





آموزشگاه انعکاس منبع جدیدترین اطلاعات، مقالات و دوره‌های آموزشی دکوراسیون داخلی

 Enekas.Academy

 Enekas.Academy



The art deco concept for the display kitchen, known as Dark Pearl, was shaped long before he and Przybylko were asked to design it, continues Dziedzic. “The idea was to design aesthetically pleasing space without compromising functionality. People need more space and storage and we thought about that while designing. We knew from the beginning that NSC’s experience in planning and building kitchen cabinets would allow us to provide solutions desired by every homeowner. New Styles’ cabinets are not only visually attractive but most of all functional. I like to think we achieved a balance between these two objectives.”

Dark Pearl

All of the elements of the Dark Pearl kitchen including the cabinets, floor and soffit were fabricated specifically for this project, explains NSC’s Alina Guzowska. “All of the woodwork was crafted and installed by New Style, including the island, main kitchen and appliance consoles.”

The main kitchen cabinets are painted, creating a feeling of luxury and elegance. All cabinet interiors including drawers and drawer inserts are made of American Walnut. Appliance consoles are a combination of painted wood, Walnut and metal. Both lower cabinets on the main wall and the island are made of figured Australian Walnut, book matched for this specific project.

“This design connects a classic style that can be seen through the in-set style of our cabinetry and traditional crown moulding with Old Hollywood glam,” says Dziedzic. “The island’s back panel, the mosaic and geometric lamp fixtures are strong artistic statements that bring all of the elements together, for a wholly unique look.”

The Dark Pearl is oozing with intricate details. Subtle, angular motifs along the island’s back panel give a jewelry-like character to the design. It is a uniquely shaped combination of mathematical and robotic precision created with a craftsman’s dedication to perfection. The handmade Moroccan clover ornaments in the back of the cabinetry represent hope, optimism and beauty, and add another layer of sophistication to the design, points out Guzowska.

The central part of the kitchen combines wood with stone and metal, “an example of the creative and innovative spirit of our company,” she adds. “Lastly, our uniquely shaped finger-pull reveals with polished nickel background define the sensuous, sleek and clean form of the design.”

Australian and American Walnut were selected for this project because of the quality of these species, notes Tracz. “Their medium texture with a moderate luster and shallow open pores makes it attractive to work with these species. Grains are close and even, usually interlocked and commonly wavy which make them a great material for cabinetry.”



WALNUT

Challenges

Before the design stage began, goals and objectives for the showroom were set. “From inception of the project to the very end, our team was working within a rigorous timeframe. Identifying tasks and quantifying the resources needed ahead of production, allowed us to better manage schedule and meet budget objectives. The design team would meet daily with the production team to make sure that the designers’ vision was translated into the final product and delivered and installed on time,” says Tracz.

“Figuring out a way to bend polished nickel to match the designed shape of wood pieces was a process which we needed to master in order to complete this part of the design,” recalls Dziedzic. “In the end we were able to make these two materials work together but it required technical knack and more time than initially expected.”

One of the major goals of the project, which was beautifully met, was to inspire guests and visitors at Merchandise Mart by drawing their attention to the artistic beauty of the kitchen and its details. “The subtle geometric patterns along the island’s back panel, inspired by Hollywood’s iconic El Capitan Theater, sparks everybody’s interest into learning more about Dark Pearl,” he says. “The combination of mathematical precision and wood craft make this panel noteworthy. The curved forms of metal and wood are unique, different and unlike any other piece. Creating functional pieces made of wood and porcelain in the center part was equally challenging and rewarding.”

Dziedzic concludes, “it is always challenging to translate a vision into reality and this project was no different. The level of technical difficulty was high. It was one adventure to draw this project and another to build it. Timing, negotiations, production calculations were some of the obstacles that needed to be successfully addressed. But because this kitchen was such a dream to design, it was an opportunity for us to showcase our talents, increase New Style’s brand recognition and set a new trend in kitchen design.”



PROJECT:
Showroom Kitchen
Chicago, IL

PROJECT OWNER:
Mike Tracz, New Style Cabinets, Inc.
Chicago, IL

WOODWORKER:
New Style Cabinets, Inc.
Chicago, IL

DESIGNERS:
Hubert Dziedzic and Piotr Przybylko
Chicago, IL

GENERAL CONTRACTOR:
New Style Cabinets, Inc.
Chicago, IL

PHOTOGRAPHERS:
Michael Kaskel
Chicago, IL

Angelika Piatek
Wood Dale, IL

Texas Tower.

Houston's newest office building showcases Basswood and Eucalyptus.

آموزشگاه انعکاس منبع جدیدترین اطلاعات، مقالات و دوره‌های آموزشی دکوراسیون داخلی

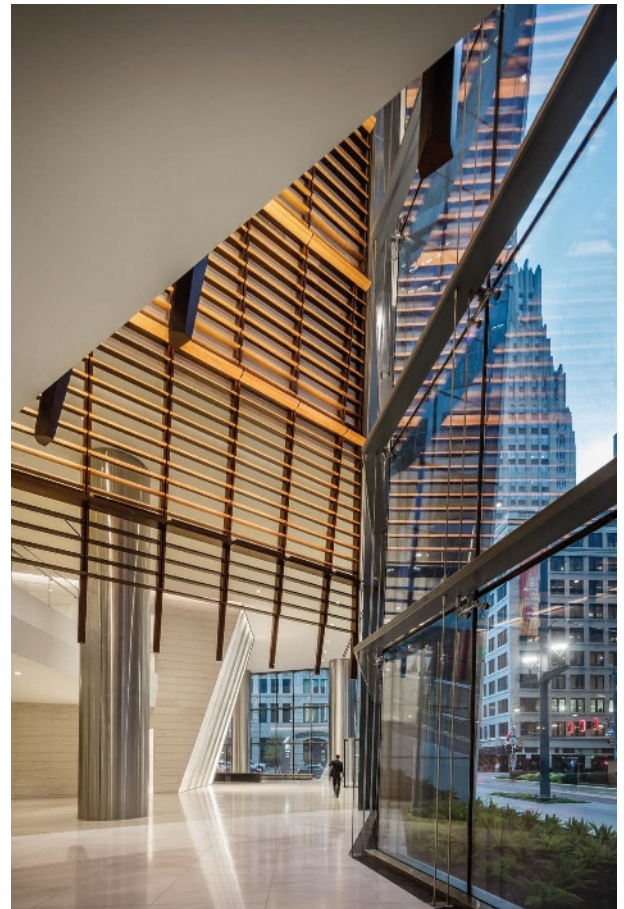
 Enekas.Academy

 Enekas.Academy





at the corner of Main and Texas Streets in Houston stands 609 Main at Texas, a high-performance 48-story, 1.85 million square-foot office tower. An expansive landscaped roof garden atop the 13-level podium conceals parking for 1700 cars.



Initiated in 2013 and completed in 2017, the elegant double-height "hotel-style" lobby accommodates multiple places for casual collaboration and encounters. The environment includes a branded café, a conference facility, prominent retail spaces, and a fitness center. Natural stone and wood, stainless steel accents, and interior landscaping attest to the lobby's quality and grandeur. A large art wall dramatically animates the space.

Owned by Hines, a private global investment, development and management firm with a presence in 24 countries, design of the building was entrusted to Pickard-Chilton, an architectural firm headquartered in New Haven, Connecticut. Architectural woodwork for the project was fabricated and installed by Brochsteins Inc., an AWI member firm located in Houston.

According to Ricardo Sasia of Brochsteins, the firm manufactured for the project a trellis of solid Basswood and figured and plain quartered Eucalyptus, lobby paneling at elevators and ceilings, a fitness center with reclaimed wood walls and locker rooms, resin/metal walls in corridors, lacquer paneling and credenzas in the conference room and decorative laminate cabinetry throughout the space.

at a glance

AWI MANUFACTURING MEMBER:

Brochsteins Inc.

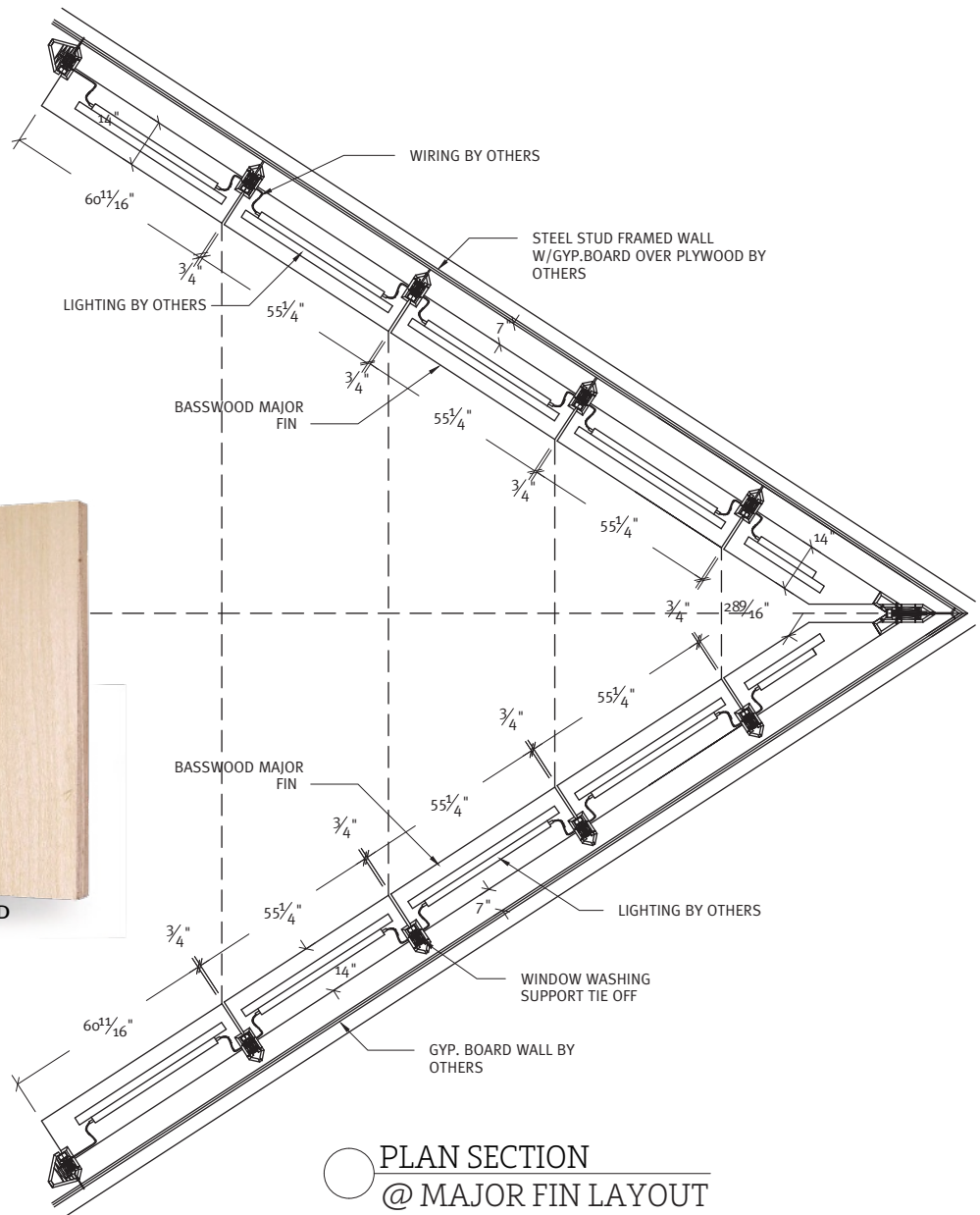
LOCATION:

Houston, Texas

ESTABLISHED:

1935

Licensed QCP Manufacturer





آموزشگاه انعکاس منبع جدیدترین اطلاعات، مقالات و دوره‌های آموزشی دکوراسیون داخلی



 Enekas.Academy

 Enekas.Academy



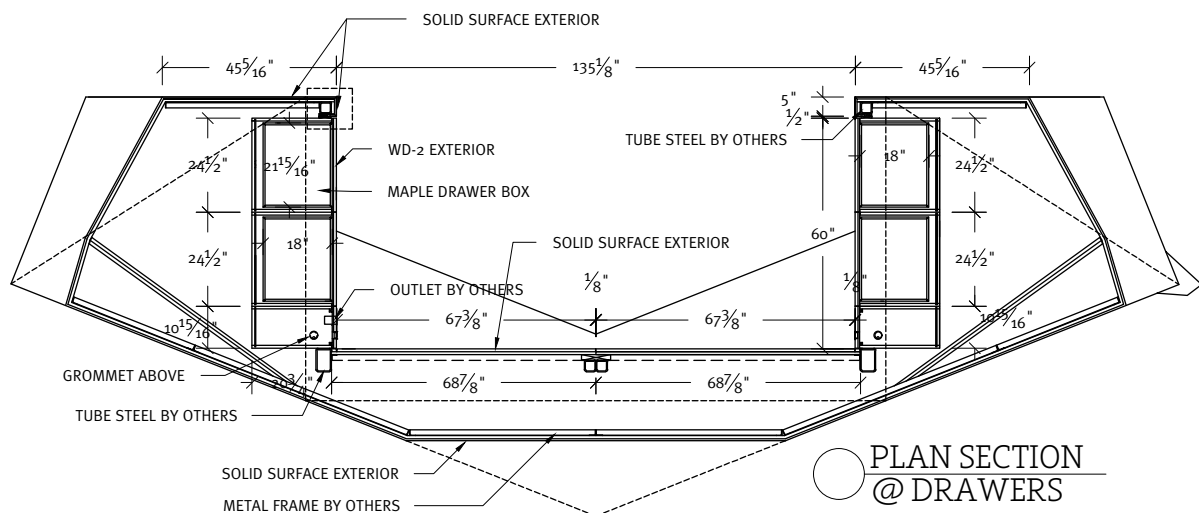
Design Objectives

As a high-performance office tower, 609 Main was designed to offer tenants greater comfort, efficiency and productivity. With walls of 10-foot, floor-to-ceiling glass and stainless steel accents, near column-free floorplates accommodate

flexible workspaces and greater collaborative areas. 609 Main's sculptural and angular form was designed to distinguish it within the Houston skyline. Its dynamic yet efficient composition rises elegantly to a sloped crown that artfully reflects the sky.

Selected for quality and durability, materials were crafted to foster the best possible tenant experience while offering a high degree of sustainability. "Significant attention was paid to workplace attributes, including natural materials, fresh air, daylight and

sophisticated mechanical systems, which contribute to occupant health and happiness, and enhance operational efficiencies," notes Mig Halpine of Pickard-Chilton.

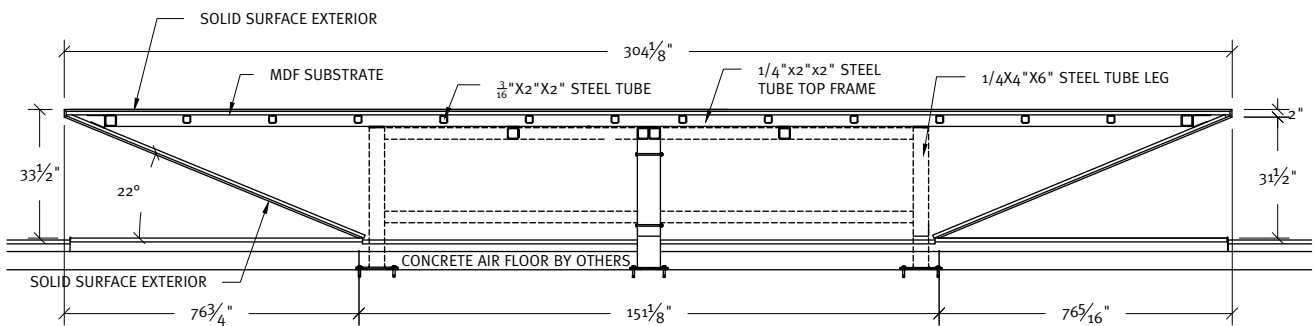


Envisioned as a next-generation office tower, the thoughtfulness of its design extends to the variety of communal spaces for tenants. Its hotel-style, amenity-rich and tech-savvy lobby features an 11-story atrium, reflecting pool, conference center, and café for networking. With unprecedented views of the skyline, an expansive

double-tiered roof terrace offers tenants a welcoming environment to reconnect with nature, enjoy lunch outdoors or host a fresh air meeting. A two-story penthouse features an electrochromic glass skylight. High performance building systems include a sophisticated underfloor HVAC system as well as "smart" elevators.

While attracting premier business tenants and their employees, 609 Main has been cited for its contributions to downtown Houston's regeneration and increased demand for residences. Furthermore, this new center for business presents a forward-thinking approach to its street level

presence and amenities to better engage passers-by and support its nascent 24/7 vitality. The double lobby provides an array of communal spaces that not only support tenants' business needs, but also support broader cultural and community organizations.



SECTION @ MAIN FRAME



Intricate Trellis

The wood screen (trellis) on the second floor of the atrium was the most intricate woodwork element in the entire project, notes Halpine. A pyramid of wooden ribs sloping in many directions, it rises 90 feet in height. "The team was working against shifting temperatures on a west facing façade and the challenge was keeping the humidity at a fixed range to avoid any warping in the wood," Halpine says.


The trellis was built with very tight tolerances and incorporated concealed steel channels that acted as structure for the trellis as well as tracks to guide the window washing baskets that maintain the curtain wall and the wood screen. Further, the trellis' major ribs have light fixtures painted to match the wood that required close coordination and the concealing of all wires into the vertical members of the trellis. "Brochsteins did a great job coordinating all of these items across the many trades," Halpine points out.

"Perhaps the most challenging aspect was the incorporation of the window washing and maintenance mechanism that was built within the structure of the trellis," Halpine continues. "For a woodworking company, this posed an interesting challenge that bridged many scopes and incorporated many trades into its final construction. In 609 Main's wooden trellis, the entire armature of the trellis cantilevers 20 feet past the ceiling datum putting pressure on the steel mullions within the trellis and limiting the deflection to avoid any damage to the wood panels."

Furthermore, Halpine continues, "all the vertical steel members conceal channels for a small silicon-wheeled dolly to travel vertically within the channel and connect to a cable from a hidden hoist. These dollies supply a rigid connection that allows maintenance baskets, hoisted from the ground up, to be pulled closer to the trellis for maintenance and cleaning. The trellis design and fabrication needed to maintain the minimalist design while concealing yet accommodating mechanical systems."

Great Communication

"We had an excellent relationship with the architects," says Sasia. "There was constant communication to achieve their design intent within the budget and schedule. We were also able to provide technical assistance with the specification of light wood to reduce weight and structure design for large suspended areas."

Halpine adds, "Given the complex design's many challenges, the woodworking team was extremely engaged and showed a degree of initiative. From building mockups of challenging corners to fully understand them, to testing their product against the toughest standards, Brochsteins went beyond the normal expectations. The team always sought to find a solution that put the design first. This was very evident when the company was challenged with the complex project of coordinating and building the atrium trellis. This company's team performed remarkably." 

“We specialize in high-end commercial projects; having our own veneer department we lay up our own veneer panels, thus controlling the process from the beginning.”

– Ricardo Sasia



PROJECT:
609 Main Office Tower
Houston, TX

PROJECT OWNER:
Hines
Houston, TX

WOODWORKER:
Brochsteins Inc.
Houston, TX

ARCHITECT:
Pickard-Chilton
New Haven, CT

GENERAL CONTRACTOR:
D.E. Harvey Builders
Houston, TX

PHOTOGRAPHER:
Joe Aker
Houston, TX



آموزشگاه انعکاس منبع جدیدترین اطلاعات ، مقالات و دوره‌های آموزشی دکوراسیون داخلی

 Enekas.Academy

 Enekas.Academy





HARDWOOD PLYWOOD, DECORATIVE TFL,
AND COMPOSITE PANELS

Duramine®
Thermally Fused Laminate Panel

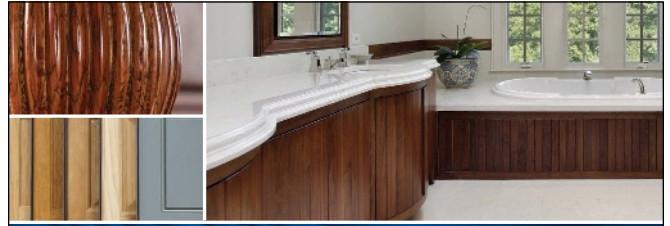
SkyPly®
Hardwood Plywood

CORE OPTIONS INCLUDE:

**Arreis®, Medex®, Medite® II
Medite® FR, SkyBlend®, UltraBlend®**



Roseburg.com



Obsessed with every detail.

PRODUCING BEAUTIFUL WOOD PRODUCTS IS YOUR PASSION.
OURS IS IN THE DETAILS.

At Sherwin-Williams, we take the guesswork out of your finishing operation with customized solutions tailored to meet your specific needs and a relentless focus on developing industry-leading technologies that help you bring out the natural beauty in your wood products.



Partnering with you to meet and exceed your most challenging performance and application needs is what drives us.

Let us show you what's next

TO LEARN MORE, CONTACT OUR TEAM AT 877-705-2681
OR VISIT OEM.SHERWIN-WILLIAMS.COM



HARDWOOD PANEL PRODUCTS

Designers and manufacturers of cabinets, furniture, casework and store fixtures depend on States hardwood panels to create beautiful, durable and environmentally responsible products.



NAF/NAUF PANELS
AVAILABLE



UV CURED
PREFINISHED PANELS



LARGE CORE AND
VENEER SELECTION



PANEL PROCESSING
CAPABILITIES

WHAT ARE YOU CREATING TODAY?

800.626.1981
StatesInd.com



INTEREST. INNOVATE. INFORM.

AWI SPEAKERS BUREAU
IS THE VOICE OF THE
WOODWORKING INDUSTRY.



The AWI Speakers Bureau offers a variety of informative **AIA/CES-approved programs** that will add vigor and interest to your next meeting or seminar. Presented by architectural woodworking experts, **topics are tailored for architects, designers, contractors or chapters.**

GO TO **AWISPEAKER.ORG**
TO MATCH YOUR
EDUCATIONAL NEEDS.



آموزشگاه انعکاس منبع جدیدترین اطلاعات، مقالات و دوره‌های آموزشی دکوراسیون داخلی

Enekas.Academy

Enekas.Academy



Flexible Materials

INCORPORATED

-Architectural Panels-
Flexible Veneer Sheets
Wood Veneer Edgebanding



Any Species ♦ Any Core ♦ Any Size
FSC ♦ LEED ♦ CARB

3101 Hamburg Pike ♦ Jeffersonville, IN 47130
800.359.9663 ♦ www.flexwood.com

HÄFELE

YOUR PARTNER IN FUNCTIONAL HARDWARE

Adding genuine WOW to your projects with functional hardware—the soft close, the push-to-open, the wide drawer which functions with the flick of a finger—is all easy when you've got the right partner. We offer hinges, drawer slides and everything else you need for all your projects—as well as the technical expertise whenever you've got a question.

LET OUR EXPERTS HELP GET YOUR NEXT PROJECT STARTED!

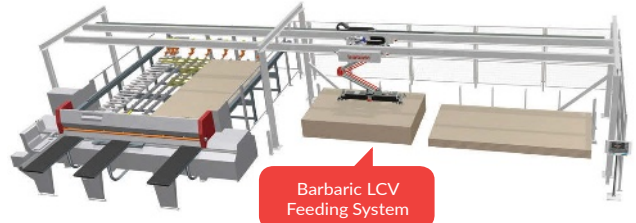
Online & Livechat: www.hafele.com/us
Phone: 800.325.6202
Email: experts@hafele.us

VIONARO DRAWER
TOMOS HINGE

ADD AUTOMATIC LOADING TO YOUR MANUAL LOAD SAW



barbaric



Barbaric LCV
Feeding System

Quickly pack significant process advantages into a small space. Add a **Barbaric LCV Feeding System** to your manual saw to speed up production, reduce scratches, and prevent damage. The **Barbaric LCV** can efficiently load sheets onto the roller table on the back of the machine, which will reduce labor and operator fatigue.



IMA SCHELLING
GROUP
USA

301 Kitty Hawk Drive, Morrisville, NC
919.544.0430 | www.imaschelling.us

آموزشگاه انعکاس منبع جدیدترین اطلاعات، مقالات و دوره‌های آموزشی دکوراسیون داخلی

 Enekas.Academy

 Enekas.Academy



New Casework Standard Addresses New Applications.

the architectural woodwork industry is constantly evolving. New products, as well as hardware, joinery, and support technologies are continuously being introduced, many of which offer great advantages and conveniences. In keeping with our changing times, the Architectural Woodwork Institute is nearing completion of the organization's next standard in our upcoming suite of standards, AWI 0641 – Architectural Wood Casework.





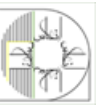
With our new standards, AWI is working to broaden the perspective of architectural woodwork through casework component performance criteria that benefit both the industry and end users. Currently, industry standards do not make provisions for the use of new manufacturing technologies and related component products. AWI's upcoming AWI o641 – Architectural Wood Casework standard has been developed with the goal of stimulating innovation and new product applications in the architectural woodwork industry.

The **AWI o641** – Architectural Wood Casework standard gives specifiers and manufacturers creative design freedom without compromising the product's performance. This allows industry professionals to maintain direct control over the finished product's aesthetic qualities and the expected structural performance of the assembled product. For the first time ever, AWI's new standard will allow design professionals to make selections regarding both aesthetic AND performance duty levels.

AESTHETICS

The aesthetic requirements in AWI's upcoming standard remain similar to the existing industry standards, including differentiations for **Premium, Custom, and Economy Grades**. In contrast, structural performance requirements and finishing technology performance measures are derived from verified test data, related industry standards, and input from industry experts.

In making these selections of aesthetics and performance duty level, specifiers may ask themselves, *“Does a Walnut executive credenza really need the same performance duty level as a high school sports equipment locker?”* Certainly, an executive Walnut credenza deserves all that Premium Grade aesthetics can deliver. In contrast, perhaps a Custom Grade plastic laminate exterior would be an appropriate specification option for the sports equipment locker, which requires materials and joinery suitable to endure severe conditions. In this case, specification as casework performance duty level 4 would likely be appropriate.





BENCHMARKS DEVELOPED

Through rigorous testing at the **AWI National Testing Center (NTC)** in Americus, GA, AWI has developed casework performance duty level benchmarks and has designated four casework performance duty level requirements in the new casework standard. These performance duty levels require casework construction joinery and materials, including hardware, joinery, and shelf support systems to meet specified criteria for structural integrity and durability, as identified by the performance duty level and specified by the design professional.

AWI's data-driven approach to establish performance and durability metrics delivers other benefits to the industry as well, most notably, traceability. Knowledge that there is verified test data to document a manufacturer's product performance brings peace of mind to professionals and end users every step of the way. It's your assurance that a comprehensive set of test data supports the specified product's performance expectations.

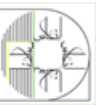
Architects and specifiers will have confidence in designs that incorporate newly-developed alternative materials because AWI, in leading the architectural woodwork industry, has created the ways and means for architectural casework to be tested and documented for product performance long before it is ever installed on a project.

INDUSTRY COMMITMENT

In AWI's commitment to its new industry standard, 2019 AWI President Michael McNulty Sr. has taken a hands-on approach. In anticipation of the upcoming release of the new standard, McNulty said, "For almost 60 years, AWI has been setting the standard for the architectural woodwork industry. In my 36-year industry career, countless times, I have sought guidance and information from both the *AWI Quality Standards* and the *Architectural Woodwork Standards* and have always come away impressed at the level of detail and clarity."

"AWI continues to set our industry's standard by embarking on our industry-changing standards development program through the ANSI process," McNulty continued. "As a member of AWI's Technical committee, I am excited to participate in the new ANSI/ AWI Standard's development. As part of this committee, I experienced first-hand how the new AWI Standard is a total industry game changer for woodworkers, design professionals, and all stakeholders."

The o641 – Architectural Wood Casework Standard is expected to be released in Fall 2019, pending outcomes of the ANSI industry canvass review currently in progress. 🌐

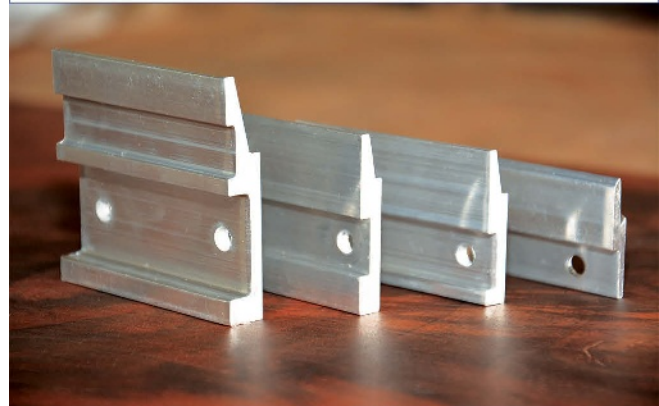




Brooklyn Hardware
MANUFACTURING

Panelclip® Clipz® Kingclip®

www.panelclip.com Phone: 503-232-1151



آموزشگاه انعکاس منبع جدیدترین اطلاعات، مقالات و دوره‌های آموزشی دکوراسیون داخلی

Enekas.Academy

Enekas.Academy



Product Showcase

STILES MACHINERY: Digital Software

Stiles Machinery offers industry-leading digital and software solutions that support every facet of the woodworking industry from raw materials to the final product and are designed to assist manufacturers in creating more productive and efficient practices from start to finish. They include: **woodCADICAM**, an intelligent software for the furniture and interior design industries that supports the entire production process to easily create layouts of individual components and complex room solutions, while automatically uploading design data to the HOMAG CNC machine for processing.

With **Configurator 3D**, order data is easily transferred from the point-of-sale directly to the production floor. This simplified order entry and management process creates a seamless, integrated solution for individual 3D furniture configurations. **Designer 3D** is design software for fast, efficient and professional configuration of furniture during sales negotiations to plan furniture individually and present it to potential customers in an aesthetically pleasing way.

DesignerWEB's

customizable HTML interface enables web-based design and composition of individual furniture, while ensuring each sales channel has the correct application from all-inclusive furniture planning to 3D plug-ins for online shops. **Cut Rite** optimizes cutting operations of panel-shaped materials, as well as manufacturing productions for speed or waste, significantly reducing overall cutting costs.

ControllerMES is a modular, scalable and flexible software platform, which supports manufacturers in every phase of the production process, from configuring production data and quality control to the final product. **MMR Office** records production data from connected machinery including workpiece quantities, machine run times, and much more. This data can then be accessed and evaluated to identify and quantify areas for optimization.

Job ID	Description	Status	Budget	Actual	Diff	Start	End
131	206 Regain/Treatment Saw Units	0%	2	39	37	10/20/17	10/20/17
131	205 Regain/Treatment Edge Side Unit	0%	3	80	77	10/20/17	10/20/17
131	206 Regain/Treatment Long Central Console	0%	25	35	10	10/20/17	10/20/17
131	205 Regain/Treatment Edge Central Console	0%	2	47	45	10/20/17	10/20/17
131	206 X-Ray Cabinets	0%	3	30	27	10/20/17	10/20/17
131	206 Hollow Drapery	0%	90	128	38	10/20/17	10/20/17
131	276 Front Office	0%	10	24	14	10/20/17	10/20/17
131	272 Accounting	0%	15	37	22	10/20/17	10/20/17
131	272 Tablet 1 & 2	0%	25	18	7	10/20/17	10/20/17
131	272 Developer	0%	0	40	40	10/20/17	10/20/17
131	274 Laundry	0%	0	181	181	10/20/17	10/20/17
131	276 L&E	0%	1	12	11	10/20/17	10/20/17
131	276 Table 3	0%	2	2981	2979	10/20/17	10/20/17
131	277 6-in-1 Room	0%	13	20	7	10/20/17	10/20/17
131	278 Lockers	0%	3	86	83	10/20/17	10/20/17
131	278 Delivery & Installation	0%	0	14	14	10/20/17	10/20/17
143	408 Room 101, 102, 103, 104, & 106	0%	5	38	33	10/20/17	10/20/17
143	403 Room 105 & 108	0%	0	21	21	10/20/17	10/20/17
143	402 Delivery & Installation	0%	0	42	42	10/20/17	10/20/17

TRADESOFT: Scoreboard Version 2

TradeSoft Inc. announces **Scoreboard version 2**, which adds even more data that can be reviewed, tracked, and updated. Scoreboard provides myriad ways of viewing **ShopPAK job, milestone, work order, department, and shipping data**. It runs in two modes: Unattended and Interactive. **Unattended** mode is used when you want to hang a large monitor that displays ShopPAK related data for a specific department. Users choose which information they want displayed, how often it is refreshed, and how it is filtered and sorted. Each instance of unattended can be set up differently so a given department only sees the information pertinent to that area.

Interactive mode is used when a user wants to interact with Scoreboard screens and update data. In this mode, users would install Scoreboard on their PC, laptop, or tablet, and browse and edit ShopPAK data. The big **difference between Scoreboard and ShopPAK is ShopPAK** presents information hierarchically. For example, you open a job, and then you drill down into job items and work orders. Scoreboard uses grids to present information that cuts across as many jobs, work orders, departments, and ship tickets. Scoreboard uses grids and graphic controls to display information and has several management dashboards that graphically display operational data, metrics and tracking history.

Contact TradeSoft at **800-289-6326** or **www.tradesoftinc.com** for additional details.

HÖCKER NORTH AMERICA: MultiStar C Filter

There's a new filter in town! The MultiStar C has been released within the United States by Höcker North America. The newly designed MultiStar C hybrid filter combines 55 years of experience in delivering efficient and effective energy management and filter solutions to customers around the globe. The unit flawlessly **combines the practical, easy handling of a Vacumobil de-duster with the power of the MultiStar filter series.**

Höcker has closed the gap between a deduster and filter systems. This filter hybrid is used for volumes from 7,000 CFM to 18,000 CFM and features low residual dust content ($<0.1 \text{ mg/m}^3(\text{H}_3)$) according to the Technical Regulation for Hazardous Substances 553. Plus, it's tested explosion resistant. MultiStar C requires just over 100 square feet of floor space and a foundation. It is delivered in three modules and

can be assembled and put into operation with the use of a crane within a few hours.

It has six bins with a capacity of 275 gallons. Each bin has a shut-off segment which allows for emptying of the chip collection bags during operation. A system shutdown is not necessary. A briquetting press can also be incorporated for added energy efficiency and green operating practices. Contact **Ben the Dust guy** to learn more at **(616)881-3328** or visit **hockerafrica.com/multistar-c.**

DAIEK WOODWORKS: Fire Rated Door Certification and Move

Daiek Woodworks has been licensed by BASF for manufacture of fire rated doors and jambs using their proprietary product **Palusol** and certified for that manufacture by QAI laboratorie. Palusol is a chemical fire core product that allows complete custom



Palusol Fire Rated Door

fabrication for either stile and rail manufacture or flush door customization. Daiek can match your most difficult fire rated requirements with the BASF Palusol product.

The fire-rated doors are inspected, certified and labeled as meeting fire-safe requirements. Custom glass, jamb assemblies, hardware machining, fabrication – any difficult production requirements can now be accomplished with fire-rated doors and delivered direct to you or to your jobsite. Daiek recently crafted a pair of round-top doors for a 6'x10' opening that passed a 60-minute fire rating test. The doors look like fine furniture, with African Mahogany veneers and custom moulding profiles. Extra-sturdy hardware in heavily reinforced jambs will provide many years of trouble-free and fire-proof service.

In January, 2019 Daiek Woodworks moved to new, larger facilities in Romeo, Michigan. With over 26,00 square feet of manufacturing space, the company will be able to work more efficiently on larger projects and continue to deliver extraordinary quality and craftsmanship.

Daiek sets the standard for excellence in custom doors - in any shape and size at the quality level you expect. No job is too large. Partner with Daiek for an outstanding experience with quality custom fire-rated doors or any custom fabrication that falls outside of your manufacturing capabilities.

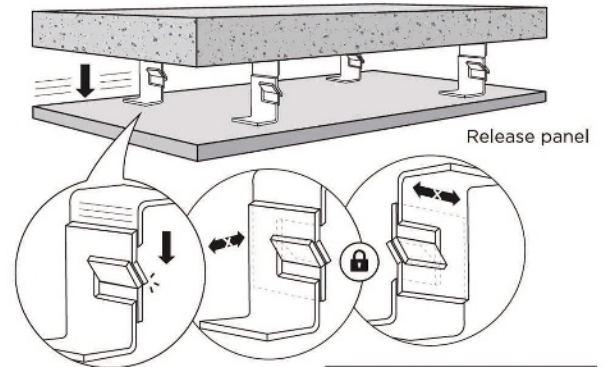


MONARCH METAL:

Mounting Ceiling Panels in Seismic Conditions

Following the successful introduction of the Monarch ceiling panel mounting system in 2018, Monarch has developed a new system **designed for seismic conditions**. Capitalizing on the system that locks ceiling panels into place, Monarch is introducing a new system with a longer engagement to allow for a greater degree of lateral movement in seismic applications without unlocking. The clips are manufactured from **16 Ga. galvanized steel** with an option to fabricate them from stainless steel. The clips interlock, limiting movement horizontally and vertically, while still being removable.

Find details for this system in our catalog, at www.monarchmetal.com, or by calling **631-750-3000**.



BIESSE:

Robotically Operated Panel Saw

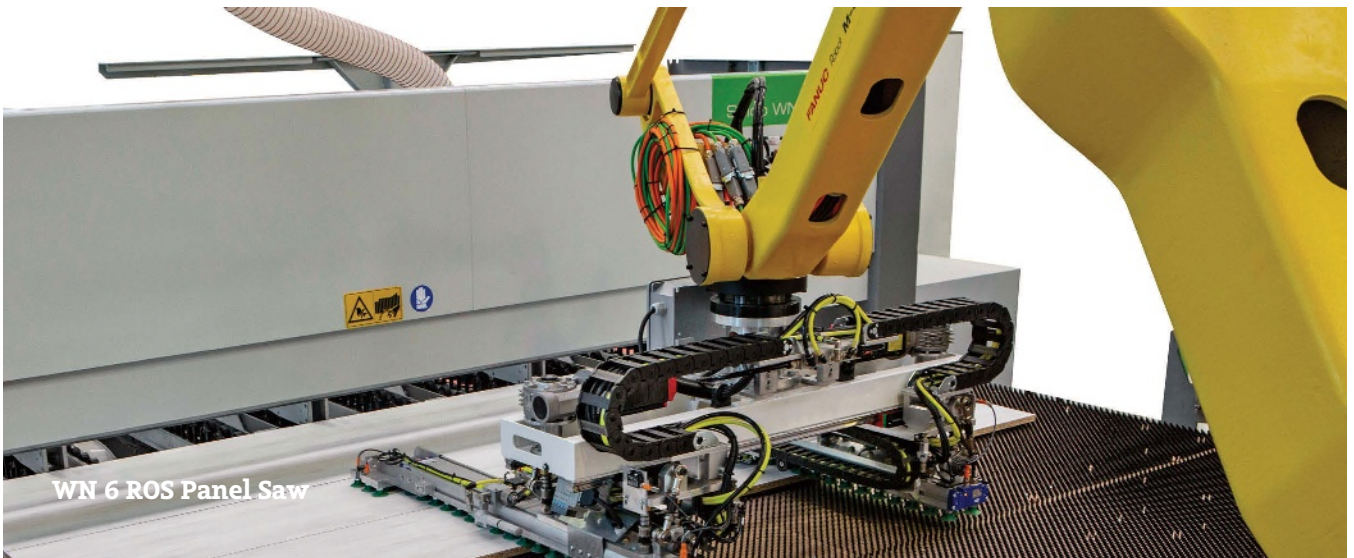
At the AWFS Fair July 17-20 in Las Vegas, Biesse is showcasing its new **WN 6 ROS Panel Saw** with integrated robot, being touted as a woodworking game changer. The WN 6 ROS (Robotically Operated System) Panel Saw changes what's possible for forward-thinking decision makers who need versatility, efficiency and solid investment returns. "In recent years, most woodworking machines have evolved greatly, but beam saws have not," Selco Product Area

Manager Paolo Pezzoli says. "Until now, an operator had to be in front of the machine, constantly moving panels, rotating strips, pressing the start button to begin every cutting cycle and most of the time, manually applying labeling and performing other operations. With the Selco WN 6 ROS we have kept the frame of a standard machine but replaced the air tables, so everything can be done by the robot instead of an operator."

Sorting the parts from different jobs can be challenging for human operators, but a robot can

easily keep them all in order and apply software-generated labeling, effectively eliminating mix-ups and errors as the parts move on to drilling, edgebanding or other processes. Efficiency is also enhanced because a robot doesn't need breaks like an operator. "When you have someone on the first shift with 10 years of experience and someone on the third shift who just started, you aren't assured of consistent quality," Pezzoli says. "The robot performs the operation in the exact same way today, a month from now, and a year from now."

The way the machine is designed also enhances operational efficiency. For example, the ROS Panel Saw has the advantage of the patented **Twin Pusher 2.1**, an exclusive feature available as an option on many Biesse beam saws but standard with the ROS, that enables faster operation, optimizing the movements during the cutting cycle. In addition, the ROS eliminates the need for an operator to stop the machine and handle waste management. Trims fall into a trap and are managed automatically. 🌐



آموزشگاه انعکاس منبع جدیدترین اطلاعات، مقالات و دوره‌های آموزشی دکوراسیون داخلی



AWI Manufacturing Members



Firms in BOLD with asterisk are LICENSED participants in the AWI Quality Certification Program as of the print date. For an up-to-date status go to awiqcp.org.

Alabama

- Cahalan Industries, Moody
Leo Cahalan, 205-640-2779
- * **CBW Cabinetry, Newton**
Chris Woodham, 334-692-3600
- * **Deas Millwork, Semmes**
Zach Deas, 251-478-1060
- Fabrication Specialists, Inc, Mobile
David Smith, 251-660-1080
- House of Cabinetry Inc, Dothan
Bob Theune, 334-793-9502
- Jimco Inc., Montgomery
Jason Hamm, 334-264-5032
- * **Leonard Peterson & Company, Inc., Auburn**
Randy Jensen, 334-821-6832
- Livingston Cabinets, LLC, Coker
John Livingston, 205-339-3846
- * **Luttrell Architectural Woodworks, Birmingham**
Robert Luttrell, 205-324-3421
- * **Phipps Cabinets Inc., Dothan**
Matt Phipps, 334-983-4512
- * **Remmert & Company, Tuscaloosa**
Luke Remmert, 205-345-4800
- SCSWORX, Madison
Olivia Pirtle, 256-461-8815
- * **Southern Woodsmith, Inc., Pelham**
Allen Ponder, 205-663-5299

Arizona

- Architectural Millwork Design Inc., Phoenix
Rod Laughlin, 623-492-9130
- * **Arizona Custom Millwork & Contracting, Phoenix**
Tamara Westfall, 602-254-6431
- Arizona Western Fixture & Display, Phoenix
Pamela Narcy, 602-272-2170
- * **Associated Construction Enterprises, Phoenix**
Travis Brewer, 602-272-7055
- * **Associated Woodworks, LLC, Phoenix**
Gail Rochwalik, 602-397-4551
- BASC, LLC, Phoenix
Ron Beveridge, 480-759-2959
- * **Bizarre Wood Products, Glendale**
Pat Brown, 602-377-4830
- * **Blue Sierra, Inc., Tucson**
Mynde Oetting, 520-624-3202
- BMI Cabinets LLC, Phoenix
Norman Buescher, 623-202-4331
- * **Crown Custom Millwork, LLC, Phoenix**
John Core, 623-879-8500

- Desert Millwork, Inc., Phoenix
Randy Heller, 602-258-7517
- * **European Techniques, Prescott**
Marie Corkery, 928-776-9957
- * **Exhibits Southwest, Tempe**
Jim Chitla, 480-763-3333
- Furniture Concepts Ltd, Phoenix
Mike Peters, 602-256-7023
- Indwell Woods, Inc., Phoenix
Mark Snider, 602-268-9500
- * **Millwork by Design, Inc., Tucson**
Mark Riggi, 520-622-8656
- * **Paul Wesley Construction, ACC, Mesa**
Paul Waterford, 480-985-1901
- * **S & R Cabinetry & Builders LLC, Tucson**
Francisco Zapien, 520-807-7604
- Styles Brothers Custom Millwork, Inc., Glendale
Shawn Styles, 623-931-3990
- Sun Valley Millwork, Inc., Phoenix
Rick Rago, 602-352-6636
- The Great Organization, Inc., Scottsdale
Nicole Gordon, 480-998-1522
- * **Western Millwork, Inc., Phoenix**
Bill Roach, 602-233-1921

Arkansas

- * **Crawson Corporation, Fort Smith**
Gary Kindy, 918-427-8400
- * **Custom Millwork Div. of CDI Contractors, Maumelle**
Donnie Green, 501-851-4421
- Estes Wood Designs Inc, Bentonville
Brandon Estes, 479-273-2974
- Nabholz Custom Millwork, Conway
Jonathan Davis, 501-505-5800

California

- Barbosa Cabinets, Inc., Tracy
Jonathan Adams, 209-836-2501
- * **Caseworx Inc., Redlands**
Bruce Humphrey, 909-799-8550
- Complete Millwork Services Inc., Santa Clara
David Becher, 800-382-7486
- East Bay Fixture Company, Oakland
Tony Tahn, 510-213-6768
- Elite Wood Design, Rancho Cordova
Dave Gwiazdon, 916-853-2002
- Fineline Architectural Millwork, Costa Mesa
Marc Butman, 714-540-5468

- Millwork Brothers Inc, Cerritos
Jesus Panagakos, 562-802-0210
- Millworks by Design, Westlake Village
Dan Parish, 818-597-1326
- Mission Bell Mfg. Company Inc., Morgan Hill
Glenn Ripley, 408-778-2036
- Montbleau & Associates, Inc., San Diego
Ana Rothman, 619-263-5550
- * **Plastic Tops, Inc., La Habra**
Ray Cerulli, 714-738-8128
- Quality Cabinet & Fixture Co., San Diego
Kate Parsons, 619-266-1011
- * **The Wood & Iron Factory, Inc, San Diego**
Norberto Gutierrez, 619-710-1660
- Wall Panel Systems, Inc., Redlands
Chuck Mc Coy, 909-307-8888

Colorado

- * **Ark Woodworks, Inc., Brighton**
Nasser Haji-Sarvestani, 303-655-0051
- BKFine, Brighton
Bruce King, 720-382-2410
- * **Cab-Con Enterprises, Inc., Colorado Springs**
Mike Perdue, 719-382-5649
- Colorado Arch. Millwork Supply, Colorado Springs
Darryl Bryant, 719-477-9939
- * **Concepts in Millwork, Inc., Colorado Springs**
Scott Robinson, 719-570-7353
- Dakota Ridge Const, Englewood
Leith Brayer, 303-915-8509
- * **Delta Cabinet Company, Inc., Delta**
Gary Kensler, 970-874-8793
- E & J Cabinets, Arvada
John Peterson, 303-425-7527
- * **Freelance Millwork, Denver**
Ted Rosiere, 303-438-1612
- High Country Millwork, Inc., Longmont
Alison Reeves, 303-532-2222
- International Custom Wood Work, Commerce City
Rolando Lopez, 720-382-4235
- J & M Custom Cabinet Shop, Inc., Denver
Julio Estrada, 303-853-9767
- * **JK Concepts, Inc., Denver**
Margery Johnson, 303-571-0672
- * **L.A. Woodworks, Inc., Windsor**
Leo Arellano, 970-482-4200
- Modern Fixture Company, Inc., Denver
Joseph Seegmiller, 303-289-2921



* **Osburn Cabinets & Design, Grand Junction**
Chad Brandon, 970-242-6899

Quality Custom Woodwork, Inc, Pueblo
Cheri Bucciarelli, 719-546-0324

* **Rails Plus Inc., Englewood**
Ishmael Moreno, 303-777-7914

Shavano Woodworking Inc., Montrose
Rafe Jones, 970-252-8315

Trustile Doors LLC, Denver
Chuck Tamblin, 303-286-3931

Unique Woodworking, Denver
Bret Kaup, 303-573-3966

Watson Mills and Design LLC, Lafayette
Todd Palmer, 303-666-6069

Woodcraft Unlimited, Inc., Denver
Tom Goulet, 303-778-9103

Connecticut

* **A. Secondino & Son, Inc., Branford**
Alfred Secondino, 203-481-3496

* **AGA Millwork LLC, Southington**
Krzysztof Kolodziejczyk, 860-426-9901

Amerifix, West Haven
Richard Moore, 203-931-7290

Atlantic Millwork, North Haven
Mark Bolling, 203-248-1969

* **Barro/American Wood Products, North Haven**
William Geremia, 203-248-4433

* **Bergan Architectural Woodworking, Middletown**
Richard Bergan, 860-346-0869

* **Connecticut Casework Specialists, LLC, Shelton**
Louis M Cutaneo Jr, 203-606-4459

Curtiss Woodworking, INC, Prospect
Dale Curtiss, 203-527-9305

* **CWC Architectural Woodworking, Inc., Bristol**
Todd Schultz, 860-585-6396

* **Desco Professional Builders Inc., Ellington**
Robert Anderson, 860-870-7070

Fairfield County Millwork, Bethany
John Ianiri, 203-393-9751

* **Legere Group, Ltd., Avon**
Craig Froh, 860-674-0392

* **Madigan Millworks, Unionville**
Matthew Madigan, 860-673-7601

Modern Woodcrafts, LLC, Plainville
Lisa Pelletier- Fekete, 860-677-7371

Petra Construction Corporation, North Haven
Guido L. Petra, 203-865-6043

White Dog Woodworking, LLC, Torrington
Thomas Officer, 860-482-3776

* **Zavarella Woodworking, Newington**
Debbie Zavarella, 860-666-6969

Delaware Millwork LTD., Middletown
Fran Hoffman, 302-376-8324

* **GTI Millwork, Wilmington**
Ryan Moore, 302-658-4158

The Eagle Group, Inc., Clayton
Christopher Field, 302-653-3000

District of Columbia

* **Columbia Woodworking Inc., Washington**
Brad Long, 202-526-2387

Florida

* **Adams Group, North Port**
Ethan Adams, 941-639-7188

Advanced Millwork, Inc., Orlando
Edmond Zaho, 407-294-1927

* **Advanced Woodworking Industries, Oakland Park**
Thomas Hoover, 954-634-3100

* **Akira Wood, Inc., Gainesville**
Hoch Shitama, 352-375-0691

Andy's Cabinets and Millwork Inc., Tallahassee
Andy Mohney, 850-562-3536

Architectural Plantation Shutters, Inc, Palm City
Thomas Cheney, 772-286-2699

Artisanbilt Construction, Inc, Valparaiso
Ken Rodgers, 850-226-2001

* **Atlantic Custom Woodcraft Corp., Odessa**
Trevor Haughey, 727-645-6905

* **AWS Carpenter Contractors, Inc., Clearwater**
Ken Schroeder, 813-855-1006

* **Baron Manufacturing, Pompano Beach**
Hasu Gavan, 954-590-3800

Blumer & Stanton, Inc., West Palm Beach
Marcille Irwin, 561-585-2525

Broward Custom Woodwork LLC, Gainesville
Boyd Wedin, 352-376-4732

Cabinet Design and Construction, Pensacola
William Hinson, 850-393-9724

CFF - Central Florida Furbishing, Orlando
Richard Vincik, 407-281-1135

Coastal Millworks, Inc., Riviera Beach
John Maffett, 561-881-7755

* **Commercial Millworks Inc., Orlando**
Gayle King, 407-648-2787

Commercial Wood Designs, Inc., Sanford
J. Fernandez, 407-302-9063

Corry Cabinet Company, Inc., Havana
Henry Corry, 850-539-6455

Craftsmen Specialist of NW Florida, Pensacola
Taylor Fagan, 850-944-1311

* **Creative Concepts Of Orlando Inc., Longwood**
Wayne Bishop, 407-260-1435

Curry Cabinetry, Inc., Tampa
Bryan Curry, 813-321-3650

* **D.R. Nickelson & Co., Lake City**
Dale Nickelson, 386-755-6565

Dan Dennis Builder's Inc., Fort Lauderdale
Dan Dennis, 954-658-5285

DBR Inc., Orlando
Richard McCree, Jr., 407-898-4821

* **Dew - Well Industries, Inc., Dade City**
Sandra Grimes, 352-567-3153

* **Distinct Designs Custom and Commercial Casework Inc., Largo**
Bill Kratimenos, 727-530-0119

* **Distinctive Kitchens & Bath, DBA Dist. Millwork, Boca Raton**
Butch Coleman, 561-864-0142

Elmore Millwork, Pensacola
Andrew Elmore, 850-453-9570

EMI Industries LLC, Tampa
Peter Schaller, 973-423-0226

* **FCC Cabinets, Jacksonville**
Shaun Keves, 904-695-0996

Federal Millwork Corporation, Fort Lauderdale
Richard Ungerbuehler, 954-522-0653

* **Fisher Cabinet Company, LLC., Pensacola**
Scott Fisher, 850-944-4171

Five Star Millwork, Pompano Beach
William Santana, 954-956-7665

Florida Architectural Millwork, Leesburg
Peter Karapiperis, 352-435-7257

Harwil Fixtures, Inc., Hastings
Louis Cici, 904-692-1051

* **Hollywood Woodwork, Inc., Hollywood**
Sebastien DesMarais, 954-920-5009

Innovation Cabinetry, Tampa
John Huang, 727-535-7667

J&J Millwork, Sanford
Kevin Cook, 407-324-2331

J.V. Installations Corp., Orlando
Stewart Vargas-Sosa, 407-849-0262

* **Kabinets By Kinsey, Inc., Tampa**
Chuck Kinsey, 813-222-0460

Keane Architectural Woodwork, Coconut Creek
Ellen Kosmajac, 954-574-9915

* **Lyndan, Inc., Tampa**
Dana Guy, 813-977-6683

Melbourne Architectural Millwork Co., Melbourne
Thomas Soyk, 321-308-3297

* **Mesh Fabrication, Saint Petersburg**
Gary Grooms, 727-823-3760

* **Mill-Rite Woodworking Co., Inc, Pinellas Park**
Jennifer Clark, 727-527-7808

* **Millwork 360, LLC, Tampa**
Mike Williams, 813-854-3100



Firms in BOLD with asterisk are LICENSED participants in the AWI Quality Certification Program as of the print date. For an up-to-date status go to awiqcp.org.

MJR Woodworks LLC, Apopka
Jason Ryan, 407-403-5430

Montgomery Cabinetry Company, Fort Myers
Paul Montgomery, 239-931-6064

Palm Beach Trim, Lake Worth
Rick Williams, 561-588-8746

Peace Millwork Co., Inc., Miami
George Peace, 305-573-6222

* **Pearcy Cabinetry, Inc, Apopka**
Paul Pearcy, 407-292-1406

* **Rich Maid Cabinets Inc., Clearwater**
Douglas Roach, 727-572-4857

* **Riverview Millworks, Inc., Jacksonville**
Charles Nichols, Jr., 904-764-9571

Royal Cabinetry & Millwork, Hialeah
Ed Garcell, 305-696-8329

* **SMI Cabinetry, Inc., Orlando**
Michelle Hull, 407-841-0292

Spacewerks, Inc, Clearwater
Kenneth Yeager, 727-540-9714

* **Star Quality, Inc., Tampa**
Max Sanchez, 813-875-9955

Straw & Company Fine Woodwork, Gainesville
Jason Straw, 352-371-3571

* **Superior Millwork Company, Jacksonville**
Francis Polly, 904-355-5675

* **WJ Bergin Cabinetry, Orlando**
William Bergin, 407-271-8982

Woodchuck Industries, Orlando
Chuck Walczak, 407-295-9900

Georgia

* **Artisan Millworks, LLC, Dawsonville**
Arthur Murray, 706-216-1050

* **Augusta Cabinets & Casework, Evans**
Phillip Boone, 706-814-4540

Augusta Sash & Door Sales of GA Inc., Evans
Bob Dehner, 706-738-1447

* **Bridges Wood Products, Inc., Savannah**
Glenda Gunby, 912-897-2694

* **Cabinets by Design, Inc., Duluth**
Rhonda Wright, 770-418-1200

Century Caseworks, Lawrenceville
Tim Miller, 770-338-2501

Columbus Cabinet Co., Inc., Columbus
Jay Blankenship, 706-561-6497

* **Commercial Bank & Bus. Equipment, Woodstock**
Joe Schieber, 770-924-1242

* **Commercial Cabinetry of Georgia, Lawrenceville**
Charles Fritz, 770-466-1805

Commercial Casework Industries, Dacula
Matt Anders, 770-271-8280

Connell Cabinets & Millworks Inc, Lakeland
Kathy Parker, 229-482-3037

Covenant Millwork Inc., Louisville
Kent Holdeman, 478-625-4088

* **Division 6 dba Royal Custom Cabinets, Norcross**
Amir Nejad, 770-263-8088

H&H Regional, DBA Atlanta Casework Systems, Cumming
Marty Hammond, 770-887-4766

Kinnane Woodworking Inc., Atlanta
Paul Kinnane, 404-758-5951

* **Mortensen Woodwork Inc., Union City**
Greg Kasten, 770-969-1475

* **Raydeo Enterprises, Inc, Ball Ground**
Preston Byers, 770-720-1100

RWP, Inc, Jesup
Michael Laidlaw, 912-427-4499

* **South Georgia Cabinet Co Inc, Ray City**
Thomas Clayton, 229-455-5800

* **Welbornhenson, Inc., Atlanta**
Rebecca Kenton, 404-523-9277

* **Williamson Millworks, Inc., Savannah**
Christopher Williamson, 912-964-2290

Willingham Partners, LLC, Macon
Brian Smith, 478-743-2642

* **Woodtec Millwork Inc., Jefferson**
David Boring, 706-367-0617

Hawaii

Bruce Matson Company, Inc., Honolulu
Brent Matson, 808-380-9414

Idaho

* **Advanced Custom Cabinets, Hayden**
Joe McCormick, 208-772-2377

* **Beck Cabinet Company, Coeur D Alene**
Mike Beck, 208-664-0892

* **Bledsoe Cabinets, Nampa**
Anna Webster, 208-433-0033

Candela Construction Interior Finishes Div., Hayden
Joseph Martin, 208-661-5720

* **Johnson Brothers Planing Mill Inc., Idaho Falls**
David Sargis, 208-522-3674

* **Pacific Cabinets, Inc., Ferdinand**
Steve Frei, 208-962-5546

* **Swainston Mill & Cabinets, Inc., Preston**
Alex Swainston, 208-852-2730

Illinois

* **Accurate Custom Cabinets, Inc., Addison**
Paul Steger, 630-458-0460

Amberleaf Cabinetry, Chicago
Jim Wong, 773-247-8282

* **Ameriscan Designs, Inc., Chicago**
Bill MacWilliams, 773-542-1291

Arbor Mills, Lockport
Daryl Del Sasso, 815-727-4096

* **Bernhard Woodwork, Ltd., Northbrook**
Mark Bernhard, 847-291-1040

* **Cain Millwork, Inc., Rochelle**
Daniel Levin, 815-561-9700

Cervantes/Salgado Arch. Woodworking, Montgomery
Eduardo Salgado, 630-299-3374

Custom Designed Cabinetry, South Beloit
Jeffrey Losinske, 815-389-4455

George J. Rothan Co., Peoria
Kevin Bowman, 309-674-5189

GreatLakes Architectural Millworks, Chicago
C. O'Donnell Winchester, 312-829-7110

Heartland Cabinet Supply, Inc, Crystal Lake
Gary Reece, 815-477-0900

* **Heritage Restoration and Design, Inc., Peoria**
Stephen Berlinger, 309-637-5404

Herner-Geissler Woodworking, Chicago
Rebecca Dittmer, 312-226-3400

* **Imperial Woodworking Company, Palatine**
Frank Huschitt, Jr., 847-358-6920

Inter Ocean Cabinet Company, Elmhurst
Ken Kamien, 630-930-5770

J&J Woodwork Furniture, Bedford Park
Jakub Skwarek, 708-563-9581

* **KBI Custom Case, Inc., Hebron**
Janice LeTourneau, 815-648-4940

Kohout Woodwork, Inc., Addison
Steve Kohout, 630-628-6257

Living Laminates, Maple Park
Anthony Medina, 847-741-2004

Majestic Architectural Woodwork, Bellwood
Pat Montalbano, 708-240-8484

Marshall Furniture Inc, Antioch
Michelle Wille, 847-395-9350

* **Meilahn Manufacturing Co., Chicago**
Terry Testa, 773-581-5204

New Style Cabinets, Chicago
Margaret Noga, 773-622-3114

* **Onsite Woodwork Corporation, Loves Park**
Mark Peterson, 815-633-6400

* **Parenti & Raffaelli Ltd., Mt Prospect**
Robert Parenti, 847-253-5550

* **Phoenix Woodworking Corporation, Woodstock**
Sandra Pierce, 815-338-9338



* **Premier Woodworking Concepts, Woodstock**
Dean Lukey, 815-334-0888

* **Redbud Ridge Custom Shop, Inc., Bartonville**
Patrick Ruder, 309-633-1173

* **Roecker Cabinets and Millwork, Morton**
Mike Matthews, 309-222-8300

* **Sprovieri's Custom Counters, Addison**
Liz Ingebrigtsen, 630-543-3400

Starved Rock Wood Products, Mendota
Dave Steensland, 815-538-7797

Stay-Straight Manufacturing, Chicago
Louis Brandt, 773-801-1792

* **Stevens Industries, Teutopolis**
Jeremy Hickenbottom, 217-540-3100

Unique Design Architectural Woodwork, Normal
Mark Fagerland, 309-454-1226

Vermillion Millworks, dba T.H. Snyder Co., Danville
Brad Irle, 217-446-8443

* **WKI, Harrisburg**
Blake Wilson, 618-253-7449

* **Wm. Huber Cabinet Works, Chicago**
Daniel Huber, 773-235-7660

Indiana

* **Advanced Cabinet Systems, Marion**
Philip Bowers, 765-677-8000

Antreasian Design, Inc., Indianapolis
Mark Antreasian, 317-546-3234

* **BC Countertops, Indianapolis**
Ed Lough, 317-637-4427

Big C Lumber Company, Fort Wayne
Tim Lange, 260-422-5584

Brownsburg Custom Cabinets, Inc., Brownsburg
Robert Overman, 317-271-1887

Chisholm Architectural Millwork, Indianapolis
Doug Chisholm, 317-547-3535

D&L Wood Products, Inc., Crown Point
Carla Scott, 219-662-9177

* **Euronique Inc., Elberfeld**
Scott Hasenour, 812-983-3337

Facility Concepts Inc, Whitestown
Kenneth Weaver, 800-915-8890

* **Fredericks, Inc., Pendleton**
Chad Colip, 765-778-7588

Heartwood Manufacturing, LLC., Batesville
Joe Meyer, 812-934-5920

Interior Fixtures & Millwork Inc, Knightsville
Ray Jones, 812-446-0933

Koetter Woodworking, Borden
Carol Phillips, 812-923-4500

Kramer Furniture and Cabinet Makers, Edinburgh
Polly Kramer, 812-526-2711

* **LJE Manufacturing Corp., Wakarusa**
Steve Gongwer, 574-862-4249

* **MARC Woodworking Company, Indianapolis**
Joseph Hirsch, 317-635-9663

Meyer Custom Woodworking, Inc., Dubois
Steven Meyer, 812-695-2021

Midwest Cabinet Solutions, Inc., Marion
JP Jones, 765-664-3938

Milestone Cabinetry & Millwork, Merrillville
Sam Tipton, 219-947-0600

Myers Cabinets, Inc., Whitestown
Roy Myers, 317-769-5323

* **P. R. Bean Co. LLC, Washington**
Jeremy Bean, 812-254-3761

Precision Wood Products, Mishawaka
Gary Matt, 574-255-7141

Signet Millwork LLC, Sellersburg
Stephen Brown, 812-248-0612

Sims Cabinet Company, Inc., Indianapolis
James Sims, 317-634-1747

* **Wood Specialties by Fehrenbacher, Evansville**
Chris Fehrenbacher, 812-963-9414

Wood Technologies LLC, Grabill
Lydiann Lengacher, 260-627-8858

Iowa

3K, LLC, Lawton
Jason Jepsen, 712-251-3314

A.F. Johnson Millwork Co., West Des Moines
Lyn Lyon, 515-277-7222

* **Architectural Arts, Des Moines**
Jim Broich, 515-265-4441

* **Calmar Manufacturing Co., Inc., Calmar**
Frank Huschitt, 563-562-3261

* **Custom Woodworks, Ltd., Sioux City**
Mark Gingery, 712-252-4357

Dras Cases, Lake Mills
Tim Krebsdach, 641-592-3333

Fletcher Wood Products, Fort Dodge
Clark Fletcher, 515-573-2021

G.C. Woodworking Inc., Ames
Greg Clouser, 515-232-0423

JC Huffman Cabinetry, Fairfield
Teresa Huffman, 641-472-8385

* **McComas-Lacina Construction, Iowa City**
Mike Manfull, 319-338-1125

* **Performance Display & Millwork, Grimes**
David Lewis, 515-986-0156

Robertson Manufacturing, Inc., Davenport
Guy Robertson, 563-322-7500

Swan Creek Cabinet Co., Boone
Michael Paul, 515-432-8126

* **The Horizon Group, Inc., Davenport**
Neil Hamilton, 563-391-1891

Woodcrafters, Marion
Scott Grekoff, 319-373-6279

Kansas

Allen Millwork Company, Wichita
Jerry Allen, 316-943-5151

* **Blake Clotia, Wichita**
Naaman Ritchie, 316-263-9722

* **Cabinetry & Millwork Concepts, Inc., Topeka**
Jim Ziegler, 785-232-1234

CCM Countertop & Cabinet Mfg. Co., Wichita
Brent Traylor, 316-554-0113

* **Griffith Lumber Company, Inc., Saint Marys**
Robert Nixon, 785-776-4104

* **Highland Millshop, Topeka**
Brandon Haberman, 785-232-9328

* **Kitchens Inc., Dodge City**
Scott Bogner, 620-225-0208

MB Cabinetry, Andover
Paul McGinness, 316-303-4722

Midwest Cabinet Co., Inc., Ottawa
Robert Howell, 785-242-8181

* **RCS Millwork, L.C., Kansas City**
Dan Keller, 913-281-7373

* **S.B.K. Supply & Millwork Co., Wichita**
Bob Schwarzenberger, 316-942-0911

* **Salina Planing Mill, Inc, Salina**
Steve Dunning, 785-825-0588

* **Technique Manufacturing Inc., Hutchinson**
Ted Robinson, 620-663-6360

* **Timberline Cabinetry and Millwork, Manhattan**
Kent Swinson, 785-323-0206

* **Wend-Wood, Inc., Wichita**
Chris Michel, 316-264-1997

Wichita Cabinet Company, Park City
Scott Walker, 316-744-3440

Woodwork Mfg. & Supply, Hutchinson
Rick Mitchell, 620-663-3393

Kentucky

Bargains Unlimited/DBA Adams Cabinetry, Louisville
Clem Adams, 502-589-9500

* **Classic Cabinets & Millwork, Louisville**
Debbie Goldberg, 502-583-3960

* **Corman & Associates Inc., Lexington**
Bill Nave, 859-233-0544

* **Four Stone Mill and Casework, Louisville**
Keith Monsour, 502-451-1528

* **Harleywood Productions, LLC, Corbin**
Ray White, 606-528-1903



Firms in BOLD with asterisk are LICENSED participants in the AWI Quality Certification Program as of the print date. For an up-to-date status go to awiqcp.org.

*** Leininger Cabinet & Woodworking, Lexington**
John Leininger, 859-252-0429

Lexington Laminates Plus Inc, Lexington
Robert Wheeler, 859-233-7655

Louisville Lumber & Millwork, Louisville
Susan Boyd, 502-459-8710

*** Morgan Smith Industries, LLC, Louisville**
Andy Keith, 270-384-0068

*** Smith's Laminating Shop, Mount Washington**
Dwayne Endicott, 502-957-5151

Southern Solutions LLC, Nicholasville
Pat Caudill, 859-339-6881

*** Stidham Cabinet, Inc., Corbin**
James Stidham, 606-528-3648

*** US Millwork Inc, Louisville**
Richard Selvage, 502-587-9450

Louisiana

*** Bayou Wood Products, Inc., West Monroe**
Steven Tippen, 318-397-0000

*** Brian A. Hebert Woodworks, Inc., Lafayette**
Donna Matte, 337-984-2461

*** C & C Millworks, Inc., Baton Rouge**
Patrick Spano, 225-273-1258

Cabinets by Perrier, Harahan
David Perrier, 504-733-3139

Central City Millworks LLC, New Orleans
Stan Walker, 504-899-1351

Custom Cabinet Specialties LLC, New Orleans
Dale Smith, 504-733-0220

Douglas Cabinet Co., Inc, Ruston
Pete Hancock, 318-768-2675

*** Gator Millworks, Denham Springs**
Chad Foster, 225-667-7758

*** Gretna Cabinet Company, Inc., Marrero**
Kerry Martin, 504-348-8232

*** Gulf Coast Woodwork LLC, Lafayette**
Deke Broussard, 337-232-4987

*** Hanley Gremillion Millwork & Supply, Alexandria**
Claire Weeks, 318-443-1202

JJ Concepts, dba Superior Millworks, Baton Rouge
Bret Mounce, 225-928-9436

*** Orleans Custom Millwork, LLC, Mandeville**
Eddie Hartson, 985-246-1300

Picardie Timber Frame, llc, New Orleans
Christina Worms, 504-587-9194

Specialty Furniture & Design, Deridder
Errol Unruh, 337-463-6918

*** Superior Woodwork And Trim LLC, Deridder**
Alex Quebedeaux, 337-226-9787

The Cabinet Shoppe, Thibodaux
Irving Kliebert, 985-446-9100

*** Woodward Millwork Group, Covington**
Danielle Rauch, 985-871-7723

Maine

Cyrus Chilton Cabinetmakers, Cape Porpoise
Cyrus Chilton, 207-282-0558

Hewes & Company, Blue Hill
Michael Overton, 207-374-2275

*** Pond Cove Millwork, Inc., Saco**
Peter Flarity, 207-773-6819

*** Trico Millwork Inc., Limington**
David Baker, 207-637-2711

Veneer Services Unlimited, Sanford
John Costin, 207-459-7221

*** West Minot Millwork, Inc., West Minot**
Dave Clark, 207-966-3200

*** Windham Millwork, Windham**
Bruce Pulkkinen, 207-892-3238

YFI Millwork, Cape Neddick
Glenn Farrell, 207-363-8053

Maryland

*** Baker & Kerr, Inc., Upper Marlboro**
Dave Baker, 301-390-1090

Beachley Millwork, Smithsburg
Larry Taylor, 301-733-7940

Blair Construction L.L.C., Millersville
James Blair, 410-729-0777

*** Brunswick Woodworking, Ijamsville**
Steve Harris, 301-874-4905

*** Cabinet Max Corp, Baltimore**
Ken Gretz, 410-265-9026

*** Cafe Millwork LLC, Baltimore**
Cheryl Nichols, 202-306-7330

Cherryworks Ltd., Kingsville
Angela Courtalis, 410-592-5977

Chesapeake Millworks, Dunkirk
Jim Hardy, 301-855-6700

*** Chesapeake Woodworking, Baltimore**
David Schreiber, 410-276-1060

*** D & S Millwork, Inc., Lanham**
Bernardo Ahlborn, 301-937-4244

Display Craft Mfg. Co., Halethorpe
Todd Weitzman, 410-242-0400

*** G.T. Brothers, Inc., Westminster**
Christy White, 443-605-1345

*** Grizz Custom Cabinets, Inc., Forest Hill**
Robin Matthews, 410-420-3510

J. Miles Construction, LLC, District Heights
Jason Miles, 240-393-4112

*** Maryland Millwork Inc., Hagerstown**
Tim Myers, 301-733-4600

*** New Era Custom Design & Cabinet Work., Frederick**
Johnny Gage, 301-695-4310

*** Specified Woodworking Corp., Laurel**
Duane Gross, 301-598-8200

The Cabinet Shop, Rockville
Russell Rainwater, 301-762-6601

*** The Washington Woodworking Co., LLC, Landover**
Kenneth Lauer, 301-341-2500

*** Wood Creations Inc., Owings**
John Downing, 301-855-7986

*** Worcester Eisenbrandt, Inc., Baltimore**
Kirk Sylvester, 410-644-6580

Massachusetts

Alpha Builders, DBA Sterling Arch. Millwork, Springfield
Fotis Gazis, 413-732-2131

Blessington Corporation, Gardner
Bruce Blessington, 978-632-6500

*** Blue Hive Inc., Worcester**
Glenn Martin, 508-581-9560

Grain Wood Shop, Boston
Brandon Gatti, 617-997-8889

J.C. Clocks Company, North Dartmouth
Aguinaldo Correia, 508-998-8442

J.H. Klein Wassink & Co., Inc., Concord
John Wassink, 978-369-3471

Jules Gourdeau, Inc., Beverly
Monique Jalbert, 978-922-0102

Kochman Reidt and Haigh Inc., Stoughton
Maureen Simoes, 781-341-4313

*** Mark Richey Woodworking, Newburyport**
Mark Richey, 978-499-3800

*** Mass Cabinets, Inc., Methuen**
Mike Sarno, 978-738-0600

New England Caseworks, Inc., Woburn
Matthew Teal, 781-932-9980

Old Colony Cabinets Inc., Stoughton
Julie Edwards, 781-341-2244

Padco Inc., Worcester
Joseph Padavano, 508-753-8486

Ponders Hollow Custom Moulding & Flooring, Westfield
Gerald Lashway, 413-562-8730

Shaw Woodworking Inc., Cotuit
James Shaw, 508-563-1242

*** South Shore Millwork, Inc., Norton**
Joseph Roth, 774-225-6300

*** Valiant Industries, Inc., Amesbury**
R. Ward Osgood, 978-388-3792

VCA Inc., Northampton
Bruce Volz, 413-587-2750

Watson Brothers LLC, Middleton
Ken Young, 978-774-7677

*** Westek Architectural Woodworking, Westfield**
Bruce Scheible, 413-562-6363



Windsor Architectural Woodworking, Malden
Michael Moscaritolo, 781-324-9600

* **Woodcraft Designers & Builders, Canton**
Lukasz Wasiak, 508-584-4200

* **Wright Architectural Millwork, Northampton**
Walter Price, 413-586-3528

Young's Woodworking Inc., Amesbury
Karen Young, 978-834-9028

Michigan

Advantage Millwork, Div. of D & D Building, Wyoming
Jim Keuning, 616-248-7908

Allen Bradley Interiors Inc., Rhodes
Brian Allen, 989-689-4133

BJC Services Inc, Chesterfield
Brandon Jennings, 586-783-4559

Bourne Industries Inc., Corunna
Jeffrey Walters, 989-743-3461

* **Britten Woodworks, Interlochen**
Jeremy Hoxie, 231-275-5457

* **Case Systems, Midland**
Thomas Bauer, 989-496-9510

Daiek Woodworks, Romeo
John Daiek, 586-268-1144

G.I. Millwork Inc., Plymouth
John Malcom, 734-451-1100

Grand Valley Wood Products, Wyoming
Shawn Hager, 616-475-5890

* **Great Lakes Stainless, Inc., Traverse City**
Michael DeBruyn, 231-943-7648

Handorn, Inc., Grand Rapids
Seth Erlandson, 616-241-6181

Haworth, Inc., Big Rapids
Jeremy Jackson, 231-527-6680

Iannuzzi Millwork Inc., Fraser
Dominic Iannuzzi, 586-285-1000

MOD Interiors Inc., Ira
Matthew Gaglio, 586-725-8227

Modern Millwork, Inc., Wixom
Jeff Weinger, 248-347-4777

NUCRAFT Furniture, Comstock Park
Kelly Prielipp, 616-328-8307

Odyssey Woodworking LLC, Kentwood
Robert Dutcher, 616-667-7225

Steelcase Inc., Grand Rapids
Carl Mikail, 616-328-7277

* **Strata Design, Traverse City**
Tyler Cerny, 231-929-2140

* **Trend Millwork LLC., Lincoln Park**
Brian Zuccaro, 313-383-6300

Minnesota

* **Aaron Carlson Corporation, Minneapolis**
Jason Horner, 612-789-8885

Andersen Cabinet, Inc., Saint Paul
Richard Andersen, 651-777-5377

Artifex Millwork Inc., Wyoming
Brian Miller, 651-462-5137

Commercial Fixtures Inc., Saint Paul
Jeff Stcynske, 651-628-9199

CTB Inc, Wyoming
Kevin Stachowski, 651-462-3550

Damschen Wood, Inc., Hopkins
Daniel Damschen, 952-933-3600

Distinctive Cabinet Design, Foley
Joe Fradette, 320-968-4351

Focal Point Fixtures Inc., Saint Cloud
Scott DeMarais, 320-203-1100

Goebel Fixture Company, Hutchinson
Matthew Field, 320-587-2112

Hansen & Company Woodworks, Saint Joseph
Adam Hansen, 320-363-0051

Interior Components Group Inc., Saint Cloud
Steven Barthelemy, 320-230-9525

Interscapes, Brooklyn Center
Ron Lyrek, 612-522-5009

Janish Wood Products, Inc., Ham Lake
Kenneth Janish, 763-434-9090

Madsen Fixture & Millwork, Inc, Forest Lake
Jeffrey Trippe, 651-982-6220

Minnor Industries, Roseville
Jessica Berg, 651-361-7500

Nevers Industries, Maple Grove
Anna Yang, 763-210-4248

Northern Woodwork, Inc., Thief River Falls
Lincoln Olson, 218-681-2305

R.C. Smith Company, Burnsville
Peter Smith, 952-854-0711

* **Shaw/Stewart Millwork, Minneapolis**
Marilyn McCann, 651-488-2525

* **Siewert Cabinet & Fixture Mfg. Inc., Minneapolis**
Rick Siewert, 612-721-4456

* **Southern Minnesota Woodcraft, Inc., Faribault**
Brad Cohen, 507-334-4985

St. Germain's Cabinet Inc., Duluth
Steve Fairbanks, 218-624-1234

* **Wilkie Sanderson, Sauk Rapids**
Marc Sanderson, 320-252-3165

Mississippi

Associated Architectural Products, Columbus
Richard Ferguson, 662-245-0400

* **Commercial Millwork Specialist, Inc., Gulfport**
Trey Pennell, 228-868-3888

Easley & Easley Millwork Inc., Jackson
Bill Easley, 601-372-8881

Maverick Millwork LLC, Horn Lake
Anthony Musarra, 662-393-2443

* **McNeil Cabinet & Millwork, Bay Springs**
Philip McNeil, 601-764-2100

* **Scanlon-Taylor Millwork Co., Jackson**
Frances Fraley, 601-362-5333

Sheldon Laboratory Systems, Crystal Springs
Eddie Adkins, 601-892-2731

* **South Coast Architectural Woodworking, Moss Point**
Burnie Kellum, 228-475-0912

WoodWorkers Construction, Inc., Picayune
Roland Fangue, 601-889-0322

Missouri

A to Z Laminating Specialists Inc, Wentzville
Mike Zender, 636-332-9961

Architectural Components Group, Marshfield
Larry White, 417-869-6777

Benee's Inc, Farmington
Debbie Elders, 573-756-0035

* **C.S. Humphrey & Company LLC, Kansas City**
Sara Humphrey, 816-444-8100

* **Cabinet Masters, Inc., Ironton**
Matt Dunn, 573-546-9999

Chantilly Cabinet, Old Monroe
Bob Martin, 636-661-5092

* **Cohen Architectural Woodworking, Saint James**
Noah Cohen, 573-265-7070

* **D. H. Schmidt Co., Inc., Saint Peters**
Rick Schmidt, 636-441-1555

* **Fixture Concepts Inc., Saint Peters**
Lisa Razavi, 636-441-2210

* **Fixture Contracting Co Inc, Saint Louis**
Gary Sauer, 314-429-5222

* **Gravois Planing Mill, Inc., Saint Louis**
Robert Paradoski, 314-776-2800

KC Custom Woodworking, Kansas City
Kent Klepper, 816-283-3335

Lami Wood Products Corp, Saint Peters
Clay Richardson, 636-441-4430

Lancia Brothers Woodworking & Fixture
Manufacturing Co., Saint Louis
Bob Naumann, 314-721-0413

Merric Millwork and Seating, O Fallon
Daniel Claypool, 314-770-9944





Firms in BOLD with asterisk are LICENSED participants in the AWI Quality Certification Program as of the print date. For an up-to-date status go to awiqcp.org.

Specialty Cabinets Inc., Belton
Kim Williams, 816-322-2211

Square One Studio, Kansas City
Chad Grossenkemper, 816-753-0351

St. Louis WoodWorks, Saint Louis
Gary Leek, 314-652-9663

Village Gallery Inc., Salem
Carl Williams, 573-729-2726

* WoodByrne Cabinetry, Inc., Saint Louis
Timothy Byrne, 314-621-4545

Montana

Moderne Cabinet, Great Falls
Layne Shanahan, 406-453-4711

Pine Door Manufacturing, Darby
Steve Morris, 406-821-3024

* Pyramid Cabinet Shop, Billings
Dan Hugelen, 406-876-1521

* Sidney Millwork Company, Sidney
Lee Harris, 406-482-2810

* WoodEz Fine Woodworks, LLC, Columbia Falls
Bill Woody, 406-892-5194

Nebraska

* C & H Cabinets and Countertops, Inc., Crete
John Culver, 402-826-5887

* Kay Dee Company of Omaha, Omaha
Scott Rasmussen, 402-593-9663

Ratigan-Schottler, Beatrice
Patrick Ratigan, 402-223-3220

Nevada

* B & C Cabinets & Millwork, Inc., Carson City
Alex Bullentini, 775-322-0000

* Herrick & O'Herron, Inc., North Las Vegas
Brian Herrick, 702-651-9725

* Pacific Showcase, Las Vegas
Steve Keane, 702-796-7272

* Victory Woodworks, Sparks
Brandan Koehn, 775-348-7552

Weber's Cabinet & Fixture Co., Reno
Nick Weber, 775-322-1100

New Hampshire

* Aubin Woodworking, Inc., Bow
Tony Aubin, 603-224-5512

* C.W. Keller & Assoc. Inc., Plaistow
Shawn Keller, 603-382-2028

Chamberlain Companies Inc., Salem
Rebecca Janco, 603-893-2606

Procraft Corporation, New Boston
James Wilcoxon, 603-487-2080

* The Woodworks Arch. Millwork Co., Londonderry
Gary Bergeron, 603-432-4050

New Jersey

* Artistic Doors and Windows, Avenel
Rick Autovino, 732-726-9400

* B & M Custom Cabinetry, Bellmawr
Mark Leonetti, 856-227-9248

Cabinet-Tronics, Inc., Birmingham
Mike Lockwood, 609-267-2625

Capital Contracting & Design, Plainfield
Don Finley, 908-561-8411

Capitol Woodwork, Marlton
Richard Palko, 856-817-0001

Collingswood Architectural Millwork, Collingswood
Robert Engelke, 856-854-0440

* Corporate Woodworking, Inc., Fairfield
Mark Andersen, 973-227-2211

Diversified Fixture, Lakewood
Phil Vitillo, 732-886-0600

Eastern Millwork Inc., Jersey City
Andrew Campbell, 201-451-9510

Epic Millwork, Somerset
Vincent Biviano, 732-296-0273

* Hausmann Industries, Inc., Northvale
Keith McHugh, 201-767-0255

Hutchinson Cabinets, Sewell
George Hutchinson, 856-468-5500

* Jafco Industries, Middlesex
Abraham Werberger, 732-356-1502

Laurel Millwork, Gloucester City
Gary Gilbert, 856-251-3100

* Lukach Interiors, Inc., Clifton
Mike Stefanoski, 973-777-1499

Oliveira & Castro, dba Art Woodwork Corp., Linden
Jorge Oliveira, 908-364-5286

* Osborn's Mill, Farmingdale
Mark Piccolo, 732-751-0889

Patella Woodworking, Passaic
Darrin McCool, 973-916-0100

* Prestige Millwork LLC, Bridgewater
Mindy Zankel, 908-526-5100

RPI Industries Inc., Medford
Kevin Martorelli, 609-714-2330

Salon Interiors, South Hackensack
Walter Siegardner, 201-488-7888

Sloan & Company, Inc., Mountain Lakes
Gennady Zaretsky, 973-227-3555

Somerset Wood Products Co., Raritan
Mitch Bloch, 908-526-0030

Victor Robbins Group LLC, Hainesport
Robert Schultz, 609-267-0080

New Mexico

* Albuquerque Cabinet Brokers, LLC, Albuquerque
Gary Harwood, 505-345-4331

* Antix, Inc., Las Cruces
Anthony Harris, 575-526-2398

Artistic Millwork & Cabinets, Albuquerque
Ronald Sanchez, 505-899-6006

* Enterprise Builders Corporation, Albuquerque
Ralph Baldwin, 505-857-0050

* Fame Mfg/NM School Products, Albuquerque
Pete Moore, 505-884-1426

* Jaynes Structures, Inc., Albuquerque
Andrew Sisneros, 505-345-8591

* OGB Architectural Millwork, Albuquerque
Rick Thaler, 505-998-0000

* P&M Caseworks, LLC, Albuquerque
Adrian Jansz, 505-883-4617

New York

All Craft Fabricators, Inc., Hauppauge
Rob Thompson, 631-951-4100

* Artone, LLC, Jamestown
Michael Calimeri, 716-664-2232

* Bauerschmidt & Sons, Inc., Jamaica
Fred Bauerschmidt, 718-528-3500

Beaver Creek Industries, Inc., Canaseraga
Gary Bajus, 607-545-6382

* BGI Interiors, Lackawanna
David Owczarzak, 716-893-1417

Carob Industries Inc, Holbrook
Robert Levey, 631-225-0900

Centre Interiors Woodworking Co., Ozone Park
Alex Lee, 718-323-1343

Champion Millwork, Inc., Syracuse
Mark Zapisek, 315-463-0711

* Christiana Millwork, Jamesville
Ross Tuzzolino, 315-492-9099

* Clearwood Custom Carpentry & Millwork, East Syracuse
Kyle Latray, 315-432-8422

Colecraft Commercial Furnishings, Jamestown
David Messinger, 716-488-2810

* Conley Caseworks, Elma
David Lock, 716-655-5830

* Consigli Construction, NY, Pleasant Valley
Dan LaCelle, 845-635-1800

Creative Laminates, Inc., Syracuse
Brian Boehm, 315-463-7580

D & W Design and Manufacturing, Middletown
Jacob Katz, 845-343-3367



Dart Architectural Woodworking LLC, Brooklyn
Artiom Tomchin, 718-497-1837

* **Digifabshop, Hudson**
John Tompkins, 518-249-6500

* **E. M. Pfaff and Son, Inc., Horseheads**
Susan Alexander, 607-739-3691

Elli NY Design Corp., Ridgewood
Peter Ligas, 718-418-9002

* **Forest Materials Inc, Buffalo**
Jeffrey Hoffman, 716-895-3900

* **Four Daughters, LLC, Long Island City**
Moshe Granit, 718-391-0440

George V DeVito Master Carpenter Inc, Medford
George DeVito, 631-286-5080

Gilbert Displays Inc., Melville
Marshal Gross, 631-577-1100

Handcraft Cabinetry Inc., White Plains
Michael Ford, 914-681-9437

* **Island Architectural Woodwork, Ronkonkoma**
Edward Rufrano, 631-737-0020

* **Jackson Woodworks, Inc., Brainardsville**
Christine Jackson, 518-651-2032

LEAP, dba Brooklyn Workforce Innovations, Brooklyn
Scott Peltzer, 718-389-3636

* **Lifetime Design Corp, Deer Park**
James Romanelli, 631-242-1162

Luxury Interiors by Pic, Long Island City
Andy Kukla, 917-776-7900

M&D Millwork, LLC, Amityville
Darren Winter, 631-608-4444

Mamais Contracting Corp., New York
Stavroula Mamais-Lorino, 212-865-1666

Mega Vision Inc., Brooklyn
Michael Chiriack, 718-821-3332

* **Millco Woodworking LLC, Hall**
Kelly Christensen, 585-526-6844

Miller Blaker, Inc., Bronx
Jerome Nocerino, 718-665-0500

MMC Millwork, Troy
Lief Larsen, 518-465-1155

Modworxx, New York
Joe Patrovich, 646-395-1216

MTD Corporation, West Babylon
Matthew Turnbull, 631-491-3905

North Country Millworks, Massena
Creig Donnelly, 315-250-3707

NR Wood Design, Brooklyn
Franklin Nunez, 718-497-2566

Nu-Tech Furnishings, Islandia
Gary Citera, 631-923-0300

NY Custom Interior Millwork Corp., Astoria
Elizabeth Lagos, 718-392-1600

* **PGS Millwork, Inc., Hudson**
Scott Manchester, 518-828-2608

Platinum Millworks, Inc, Bronx
Aidan McCormack, 718-509-0990

Precision Cabinets Inc., Smithtown
Peter Loscialpo, 631-543-3870

Quaker Millwork and Lumber, Orchard Park
Robert Raber, 716-662-3388

* **R.B. Woodcraft, Inc., Syracuse**
Raymond Brooks, 315-474-2429

Red Barn Cabinet Shop, Brooktondale
Ben Boynton, 607-539-7675

Ridge Cabinet & Showcase, Inc., Rochester
Steve Lader, 585-663-0560

* **Riverfront Custom Design, Inc., North Tonawanda**
Paul Tucker, 716-693-2501

Scanga Woodworking Corp., Cold Spring
Laura Hammond, 845-265-9115

Solid Surface Craftsman, Inc., Glenville
Alan Boulant, 518-388-8644

Storm King Group, Inc., Montgomery
Tim Leiching, 845-457-5552

Thornwood Architectural Woodwork, Thornwood
Tim Egan, 914-773-1400

* **Tobin Woodworking, Inc., Farmingdale**
Jody Tobin, 631-249-1614

* **T-Squared Custom Millwork Inc., Oxford**
Tamara Tarbell, 607-843-2442

Vella Interiors, Inc., Long Island City
Michael Vella, 718-729-0026

W. Designe Inc., Peekskill
Alejandro Bernabo, 914-736-1058

* **Wood Etc., Inc., Syracuse**
Jesse Schmidt, 315-484-9663

Woodtronics Millwork Corp., Yorktown Heights
Jan Efraimsen, 914-962-5205

North Carolina

* **Apex Marble & Granite, Inc., Morrisville**
Hank Lane, 919-462-9202

* **Arrowood Manufacturing, LLC, Norwood**
Jim Yeatts, 704-787-4151

* **Atlantic Commercial Caseworks, Charlotte**
Nathaniel Gatewood, 704-393-9500

* **Basepoint, Inc., Sharpsburg**
Larry Gutshall, 252-977-7549

* **BMC Architectural Millwork, Greensboro**
Scott Boswell, 336-621-1208

* **Cabinet Kraftsmen Specialties, Inc., Durham**
D.J. Spencer, 919-477-6318

Carocraft Cabinets, Inc., Charlotte
Larry Stroud, 704-376-0022

* **Caseworx, Hudson**
John Bostian, 828-212-0000

* **Custom Wood Products of Rural Hall, Rural Hall**
James Simmons, 336-969-6886

* **D&L Cabinets, Inc., Graham**
Louis DeMarco, 336-376-6009

* **Forest Millwork, Inc., Asheville**
Alan Tenan, 828-251-5264

* **Hajjar Cabinet Systems, Goldsboro**
William Hajjar, 919-735-7547

* **Hardwood Designs, Hillsborough**
Tom Carstens, 919-643-1100

Heritage Woodwright llc, Denver
Robb Parker, 828-228-8072

* **Interior Wood Specialties Inc., High Point**
Huig Zuiderent, 336-431-0068

* **Kewaunee Scientific Corporation, Statesville**
Cynthia Freeze, 704-873-7202

Lentz Cabinets and Associates LLC, Arden
Jason Higgins, 828-687-7688

* **Master Kraft Inc, Matthews**
Michael Kovalev, 704-234-2673

* **MDN Cabinets Inc, Raleigh**
Justin Hanlon, 919-662-1090

Metro Woodcrafter of NC, Inc, Charlotte
Barry Rigby, 704-394-9622

Metrolina WoodWorks Inc, Stallings
Fred Crawford, 704-821-9095

* **Northside Millwork Inc., Hillsborough**
Peter Singer, 919-732-6100

Pine Creek Cabinets, Inc., Winston Salem
Murray Fidan, 336-784-1061

* **Prestige Millwork Inc., Star**
Kim Gariepy, 910-428-2360

* **Pridgen Woodwork Incorporated, Whiteville**
Jack Burgess, 910-642-7175

RLS Commercial Interiors, Inc., Wendell
Robert Stout, 919-365-4086

* **Rowland Woodworking, Inc., High Point**
Jeffrey Cox, 336-887-0700

S. Harris Inc., Sophia
Steven Harris, 336-399-4919

Salisbury Millwork/Kronen Casework, Salisbury
Clay Lindsay, 704-603-4501

* **Stanly Fixtures Co., Inc., Norwood**
Todd Curlee, 704-474-3184

* **Stephenson Millwork Co., Inc., Wilson**
Lee Stephenson, 252-237-1141

* **The Ullman Group, Charlotte**
Luke Ullman, 704-321-4174

Thompson Millwork, LLC, Durham
Matthew Thompson, 919-596-8236



Firms in BOLD with asterisk are LICENSED participants in the AWI Quality Certification Program as of the print date. For an up-to-date status go to awiqcp.org.

*** Triangle Case Work, Inc., Raleigh**
Ricardo Martinez, 919-781-2270

TS Woodworks and RAD Design, Inc., Monroe
Toral Jagani, 704-238-1015

Unique Concepts, Wendell
Lynne Leach, 919-366-2001

*** Watson Wood Works, Winston Salem**
Jesse Watson, 336-788-1881

WoodTech/Interiors, Inc., Charlotte
Bob Binner, 704-332-7215

Yadkin Valley Cabinet Co, Inc, Mount Airy
Brad Collins, 336-786-9860

Zepa Industries, Inc., Charlotte
Ed Zepa, 704-583-9220

North Dakota

Cal-Dak Cabinets, Minot
Darwin Maasjo, 701-838-2901

*** Minot Sash and Door Company, Minot**
Michael Feist, 701-852-2181

*** TMI Systems Corporation, Dickinson**
Chris Johnson, 701-456-6716

*** Woodside Industries, Inc., Cavalier**
Jerry Symington, 701-265-8212

Ohio

*** Amtekco Industries, Inc., Columbus**
Roger Henry, 614-228-6590

*** ArtWoodworking & Mfg. Co., Cincinnati**
Ralph Dickman, 513-681-2986

Benchmark Woodworks Co., Delaware
Daniel Witt, 740-363-2525

*** Bruewer Woodwork Mfg. Company, Cleves**
Ralph Bruewer, 513-353-3505

*** Cassidy Woodworks Inc., Dayton**
Tom Joch, 937-256-7948

*** Colby Woodworking, Inc., Dayton**
Steve Colby, 937-254-7647

*** Conte Custom, Ltd, Columbus**
Sam Amore, 614-595-3558

*** Cooper Enterprises, Inc., Shelby**
Monty Friebe, 419-347-5232

*** Corna Kokosing Construction Co., Westerville**
Jim Graves, 614-901-8844

*** Courthouse Manufacturing, LLC dba Chappell Door Co., Washington Court House**
Wayne Gooley, 740-335-2727

Creative Cabinets, Ltd, Lancaster
Troy Shurtz, 740-689-0603

*** Crowe's Cabinets, Inc., Poland**
Tim Crowe, 330-729-9911

*** Custom Millwork Designs, Oakwood Village**
James Torrence, 440-232-4644

DB Cabinets & Construction, Arcanum
Dennis Benedict, 937-692-5633

Dover Cabinet Industries, Inc., Dover
John Perkowski, 330-343-9074

*** Eurocase Arch. Cabinets & Millwork, Millersburg**
Nick Mullet, 330-674-0681

*** Forum Manufacturing Inc., Milford Center**
Nancy Kovacs, 937-349-8685

Hamilton Casework Solutions, Fairfield
Brad Quick, 513-870-4400

*** Hoge Lumber Company, New Knoxville**
Mike Burd, 419-753-2263

*** idX Corporation, Dayton**
Isaac Bokros, 812-280-0000

JAH Woodworking, LLC, Bloomingdale
John Humpe, 740-266-6949

*** Keim Lumber Company, Charm**
Duane Hershberger, 330-893-2251

Merritt Woodwork, Mentor
Keith Merritt, 440-942-0205

Midwest Commercial Millwork, Inc., Lima
Doug Coolidge, 419-224-5001

*** Mill Tech, LLC, Columbus**
Kevin Henderson, 614-275-1888

*** Mock Woodworking Co., Zanesville**
Douglas Mock, 740-452-2701

MRO Built, North Canton
Jackie French, 330-526-0555

Ohio Wooden Bench Co/Luken Const., Cincinnati
Kenneth Luken, 513-941-5400

Ohio Woodworking Company, Norwood
Tom Frank Jr., 513-631-0870

Okeana Hardwoods & Mfg., Okeana
Ken Zawaski, 513-738-3421

*** Reserve Millwork, Inc., Bedford Hts**
Diane Tutolo, 216-531-6982

Riceland Cabinet Corporation, Wooster
Steve Yoder, 330-601-1071

*** Rivereast Custom Cabinets, Inc, Toledo**
John Weiser, 419-244-3226

Riverside Construction Services, Inc., Cincinnati
Robert Krejci, 513-723-0900

Robertson Cabinets Inc, West Milton
Jeffery Yantis, 937-698-3755

Royal Cabinet Design Co., Brook Park
Joe Estephan, 216-267-5330

S&G Manufacturing Group LLC, Hilliard
Dave Gilchrist, 614-334-3600

Salem Mill & Cabinet, Salem
Bruce Winters, 330-337-9568

Sauder Manufacturing Company, Archbold
Brent Holland, 800-537-1530

Sheridan Millwork & Cabinetry, Cleveland
Ed Sheridan, 216-663-9333

*** Signature Millshop, Columbus**
Mario Grilli, 614-469-1230

*** Southern Cabinetry Inc., Bidwell**
Don Strieter, 740-245-5992

*** Stanton Millworks, Cincinnati**
John Zembrodt, 513-961-7201

Stratton Creek Wood Works, LLC, Kinsman
Kathy Lawman, 330-876-0005

Stull Woodworks Inc., Troy
Brian Stull, 937-698-8181

*** TDS Custom Cabinets, Columbus**
Dustin Sauer, 614-850-7590

*** Ted Bolle Millwork, Inc., Springfield**
Patrick Nartker, 937-325-8779

*** Topcraft, Inc., Barberton**
Bill Cvammen, 330-753-3083

*** Vaughn Interior Concepts, Inc, Dayton**
Craig Vaughn, 937-220-9996

*** Vivo Brothers Inc., Poland**
Vince Vivo, 330-629-8686

Volpe Millwork Inc., Cleveland
John Volpe, 216-581-0200

*** Walsh Commercial Group dba Wood Dimensions, Cleveland**
Thomas Rocks, 216-251-5509

Wittrock Woodworking & Mfg., Blue Ash
Chris Wittrock, 513-891-5800

*** Wood Concepts Inc., Cleveland**
Jackie Even, 216-579-0500

Oklahoma

Alpha Omega Woodworks, LLC., Norman
PJ Pinkerton, 405-364-0022

Bearwood Native, LLC, Tulsa
Jeff Cronin, 918-933-6601

*** Cooper Cabinet Systems, Oklahoma City**
Matt Cooper, 405-528-7220

*** EGR Incorporated, Oklahoma City**
Darren Lister, 405-943-0900

*** FADCO, Inc, Tulsa**
Bob Vincent, 918-832-1641

*** Lakewood Cabinetry, Langley**
Doug Olson, 918-782-2203

Strategic Retail Concepts, Sapulpa
Tony Ducato, 918-581-6800



* **Wood Systems, Inc., Tulsa**
Casey Decker, 918-749-7062

Oregon

* **Advance Cabinet Designs, Inc., Eugene**
Andy Michaud, 541-465-3394

* **Architectural Millwork Mfg. Co., Eugene**
Jarold Stump, 541-689-1331

* **Artek, Inc., Beaverton**
Michelle Cartwright, 503-641-6877

Cascade Cabinets and Countertops, Central Point
Randy Craig, 541-727-7877

Charles Marpet Fine Woodworking, Cottage Grove
Charles Marpet, 541-767-0672

* **Faustrollean Fixture Co, Inc., Portland**
Dylan Zell, 503-735-4469

* **Fuller Cabinets, Eugene**
Danielle Benson, 541-349-9887

* **Newood Display Fixture Mfg. Co., Eugene**
Avis Dininio, 541-342-4481

Old Mill Cabinets and Millwork, Springfield
Jim Flom, 541-246-2006

W.C. Cabinets dba Fixturelogic, Eugene
Mike Petrushkin, 541-485-7579

Pennsylvania

Advanced Trim and Kitchens, Kinzers
Merv Engel, 717-442-8098

* **Allegheny Millwork & Lumber, Lawrence**
William Clasper, 724-873-8700

* **American Millwork & Cabinetry, Inc., Emmaus**
George Reitz, 610-965-0040

American Wood Design Inc., Chester
Jo Ann Gilhool, 484-380-9500

* **Artisan Display Inc., Red Hill**
Ted Wassmer, 215-679-8577

* **Beam's Custom Woodworking Inc., Morgantown**
William Beam, 610-286-9040

* **Bench Dogs, Denver**
Mike Knauer, 717-964-1111

* **Bentley & Collins Company, Montoursville**
Kurt Fritz, 570-546-3250

* **Boyertown Planing Mill Company, Boyertown**
John Bingaman, 610-367-2124

Brightbill Industries Inc., Harrisburg
Martin Brightbill, 717-233-4121

Bristol Millwork Inc., Philadelphia
Michael Baier, Sr., 215-533-1921

Burns & Wohlgemuth, Bensalem
George Wohlgemuth, 215-638-9672

C&S Custom Cabinets, Montoursville
Wesley Bower, 570-368-3130

Commercial Stainless, Bloomsburg
Brian Wawroski, 570-387-8980

CraftPoint Concepts, Ephrata
Konstantin Reznik, 717-283-4325

E. B. Endres Inc., Huntingdon
Richard Endres, 814-643-1860

F. DeFrank & Son Custom Cabinets, Inc., Smock
Dominic DeFrank, 724-430-1812

* **Fine-line Cabinets, Inc., Hollidaysburg**
Douglas Irvin, 814-695-8133

FW Millworks LLC, Erie
Dean Allred, 814-449-0323

* **Giffin Interior & Fixture, Inc., Bridgeville**
Dustin Giffin, 412-221-1166

* **Glenshaw, Allison Park**
Kenneth Rogg, 412-753-0231

* **Harmony Plus Woodworks Inc., Dillsburg**
Terry Frankenfield, 717-432-0372

Hill Woodworks, Inc., Brogue
Christine Foltz, 717-927-9771

* **Hoff Enterprises Inc., Johnstown**
Kurt Freidhoff, 814-535-8371

Interior Design Fabrications, Inc., Folcroft
Michael Sabatina, 610-237-0700

Ivan C. Dutterer Co., Hanover
Greg Musser, 717-637-8977

* **J.C. Snively & Sons, Inc., Lancaster**
Alan Hinson, 717-291-8989

* **JBI/Parisi, Newtown**
Timothy Parisi, 215-968-6677

JWI Architectural Millwork Inc., Mercersburg
Gary Ahalt, 717-328-5880

* **Master Woodcraft Corporation, Washington**
David Diesel, 724-225-5530

* **Merrigan Corp dba/National Woodwork Mfg, Bethlehem**
Christine Merrigan, 610-317-6300

Millwork Solutions Inc., Seward
Bryan Paczek, 814-446-4009

Mitre Wright Inc., York
Todd Salony, 717-812-1000

Morris Black and Sons, Allentown
Charles Buchsbaum, 610-264-2700

New Holland Church Furniture, New Holland
Bradley Kurtz, 717-354-4521

Paul Downs Cabinetmakers, Bridgeport
Paul Downs, 610-239-0142

* **Pittsburgh Specialty Cabinet Company, Verona**
Leo Lisowski, 412-731-1092

Precise Design Group, Allentown
Stephen Solt, 610-965-9400

* **Rynone Manufacturing Corp, Sayre**
Richard Rynone, 570-888-5272

Schlaegle Design Build Associates, Pittsburgh
Casey Schlaegle, 412-458-3966

Seven Trees Woodworking, New Holland
Matt Miller, 717-351-6300

SSC Distributors, Chester
Barry Scholtz, 610-494-2700

* **Team Laminates Company, Pittsburgh**
John Earnest, 412-323-1911

* **Tech 2000 Woodworks, Inc., Jeannette**
Keith Geller, 724-522-9914

* **Wood-Metal Industries, Selinsgrove**
Scott Groce, 570-374-1176

* **Wyatt Incorporated, Pittsburgh**
Frederick Episcopo, 412-787-5800

Puerto Rico

* **Hambleton Group Companies, Inc., San Juan**
Tito Suarez, +1787 7877818186

Oficiosma, San Juan
Francisco Gutierrez, 787-505-5315

Riax Contractors Corp, San Juan
Axel Riveria, +1787 7877546410

Rhode Island

All State Fabricators, Div. of EMI Industries, Cranston
William Johnson, 401-785-3900

* **Artisan Millwork, LLC, Pawtucket**
Peter Sparling, 401-721-5500

* **Design Fabricators, Inc., Cranston**
Roberta Degraide, 401-944-5294

* **Frank Shatz & Company, Inc., Warwick**
Randy Shatz, 401-739-1822

* **Herrick & White, Ltd., Cumberland**
Kenneth Bertram, 401-658-0440

Interior Woodworking Solutions, Cranston
Brian Franco, 401-919-5959

* **Jutras Woodworking, Inc., Greenville**
Dave Payette, 401-949-8101

* **Millwork One, Inc., Cranston**
John Fish, 401-738-6990

T & C Woodworking, Pawtucket
Ferdinando Moniz, 401-728-9663

Wetstone Design & Millwork, Middletown
Fred Rego, 401-619-5930

South Carolina

Biggs Casework, Florence
Catharine Love, 843-673-0081

* **Blue Ridge Cabinetworks, LLC, Drayton**
Benjamin Ratterree, 864-595-0398

Cabinets of the Carolinas, Inc., Greenville
Kenny Witthuhn, 864-292-9901

Charleston Woodworks, Inc., Charleston
James Jacobs, 843-744-0016



Firms in BOLD with asterisk are LICENSED participants in the AWI Quality Certification Program as of the print date. For an up-to-date status go to awiqcp.org.

- * **Coastal Millwork & Supply LLC, Summerville**
Mary Miller, 843-873-9192
- * **Designer Cabinetry by Flanders, Gaston**
Paul Flanders, 803-739-0034
- * **James McGrew Cabinetmakers, Columbia**
James McGrew, 803-933-9988
- * **Low Country Case and Millwork, Inc., Ladson**
David Stasiukaitis, 843-797-0881
M&M Custom Woodworks, Inc., Greenville
Gregory Mock, 864-269-0888
- * **Palm Bay Cabinet Company, LLC, Beaufort**
Dustin Qualls, 843-846-2900
- * **PCI Cabinetworks, Harleyville**
Patricia Wilkinson, 843-462-7509
- * **Peralta Woodworks, Inc., Columbia**
Ernie Peralta, 803-779-6669
Satchel, LLC, Mount Pleasant
Josh Fuller, 843-818-4608
- * **Satterfield Woodworking Inc., Greer**
Gene Fowler, 864-877-0706
- * **Southern Commercial Interiors Inc., Lexington**
Rick Batchelor, 803-808-0346
- * **Specialty Woodworks, Inc., Lexington**
Graham Houghten, 803-957-8872
- * **Woodco Inc., Piedmont**
Brian Dobson, 864-277-4001

South Dakota

- GHC Casework, Sioux Falls**
Tonya Stromsness, 605-336-6082
- JMJ Caseworks, Sioux Falls**
Becky Miller, 605-332-0805
- Maloney, Inc., Sioux Falls**
Chris Maloney, 605-368-5214
- * **Riss & Associates Cabinets & Casework, Black Hawk**
Timothy Roth, 605-718-5080

Tennessee

- American Foodservice, Savannah**
Barbara Easley, 731-925-2200
- ANA Woodworks, LLC, Chattanooga**
Mike MacKinnon, 423-867-3171
- Architectural Surfaces LLC, Chattanooga**
Larry Leigh, 423-899-6233
- Cabeen Originals, Chattanooga**
Paul Thompson, 423-521-0797
- * **CampbellRhea-ICI, Paris**
Jim Arthurs, 731-642-4251

Cedar Forest Construction, LLC, Lebanon
Brett VanSickle, 615-481-7005

Clancy Custom Woodworking, Knoxville
Art Clancy, 865-938-4638

Courtland Woodworks, Inc., Heiskell
Jennifer Atkins, 865-938-8387

* **Cumberland Architectural Millwork, Nashville**
Andrew Martin, 615-254-1710

Custom Counter & Display LLC, Chattanooga
Randy Burrows, 423-648-0490

Egbert Millwork & Lumber Co DBA Stephens Millwork & Lumber Co, Nashville
W. Egbert, 615-650-5300

IDB Furniture & Signs, Portland
Sidney Medlock, 502-715-2935

Integrity Architectural Millwork, Nashville
Frank Fuzzell, 615-332-0076

Memphis Masterworks LLC, Memphis
Trevor Knight, 901-525-9966

* **Memphis Plywood Corporation, Memphis**
Brian Wilhite, 901-948-5531

Mill Creek Associates, Inc, Antioch
Stephen Landers, 615-832-0737

* **R.J. Wherry & Associates, Madison**
Colton Wherry, 615-868-1821

* **SledgeCraft, Inc., Murfreesboro**
Trevor Sledge, 615-898-1223

* **Steve Ward and Associates, Inc., Nashville**
Andrew Ward, 615-350-7310

Sudberry Millwork Inc., Nashville
Clay Zorn, 615-331-4076

* **Tate Ornamental Inc., White House**
Ernie Palmquist, 615-672-8333

Vintage Millworks, Inc., Nashville
Margaret Dunn, 615-244-8044

Texas

* **3V Company, Houston**
Ruben Villarreal, 281-717-1200

Abilene Millwork, Abilene
Franz Hallgren, 325-677-8856

Acacia Originals, LLC, Porter
Will Fuller, 877-565-5995

AEP Millwork, Arlington
Alan Davis, 817-522-4542

Allan Commercial Millwork, Sherman
Amitkumar Patel, 469-213-0405

Ambrose Taylor LLC, dba HEWN, Austin
Ambrose Taylor, 512-386-6404

* **Anton Cabinetry, Pantego**
John Anton, 817-460-8681

Apple Contractors, Houston
Robert Dean, 713-681-2218

Ar-Case, dba Arch. Caseworks of TX, San Antonio
Marie Plata, 210-735-5175

Asmar Custom Cabinets, Inc, Dallas
Allen Asmar, 972-241-7676

* **Austin Conor Millwork, Joshua**
Melissa Plihal, 817-295-8837

* **Brochsteins, Houston**
Steven Hecht, 713-666-2881

Buffalo Architectural Woodwork, Houston
Shelly Thornhill, 713-747-5424

Carlens Architectural Millwork, LLC, Del Valle
Mario Lopez, 512-363-7683

Carpentry Associates, Midlothian
Peter Sandoval, 469-766-1069

* **Casework Solutions LLC, El Paso**
Juan Soto, 915-875-8640

* **CCI Group, Longview**
James Hodges, 903-753-2488

* **CG Millwork and Construction LLC, El Paso**
Carlos Gallardo, 915-239-1980

* **Classic Millwork & Products Inc., El Paso**
Bruce Spitz, 915-833-9922

Comac Fixtures, Inc., Amarillo
Ruby Weiss, 806-376-4511

Concepts in Cabinetry, Saint Hedwig
Sharon Scrimpsner, 210-667-1717

* **Contemporary Concepts Inc, Texarkana**
Venetia Williams, 903-831-4482

CRC-Mastercraft, Inc., Houston
Candi Graves, 281-897-8880

Cubic Custom Cabinets Corp., Grand Prairie
Michael Haynes, 972-647-4090

CWW Millwork, Houston
Obad Morales, 832-619-1068

Dovetail Custom Woodworks, Del Valle
Isaac Alexander, 512-924-5555

* **Environment LTD, Houston**
Mel Manning, 281-983-0100

Environs Architectural Millwork, Pflugerville
Matt Clawson, 512-990-0037

Facility Construction Services, Inc. (FCS), Dallas
Paul Holden, 214-381-0101

Fish Construction, Inc., Stafford
Scott Fish, 281-261-3375

* **Global Casework Manufacturing, Sugar Land**
George Abuata, 281-494-6181

Goebel Woodwork, Cuero
Carl Krueger, 361-277-5220

* **Hollman Inc., Irving**
Travis Hollman, 972-815-4000

Houston Cabinets, Houston
Rick Keschinger, 713-349-0848



* **Howard-McKinney, Inc., Tyler**
Mike Johnson, 903-593-3651

* **Hunter Millworks, Inc., Lubbock**
Dan Poole, 806-792-4864

* **Imperial Contracting LLC, Horizon City**
Eddie Palacios, 915-533-8515

Imperial Woodworks, Inc., Waco
Kevin Smith, 254-741-0606

Impressions Architectural Millwork, Cypress
Brian Dumaine, 281-477-8080

JC Manufacturing Inc, Emory
Toby Zyroll, 903-473-3770

* **JC Millwork Inc, Flower Mound**
Donny Palmertree, 469-702-2570

Jericho Woodworks, Stafford
Nidal Abuata, 281-969-7947

* **Joshtom Millwork, Houston**
Tobin Englet, 281-561-8484

* **K&J Woodworks, Umland**
Brett Burich, 512-668-4237

* **K.P. Cabinets, Cuero**
David Kacir, 361-275-8472

* **Keystone Millwork Inc., Bryan**
Susan Bailey, 979-823-4846

* **Lutz Woodworks LLC, Wylie**
Greg Lutz, 972-429-5521

Maco Manufacturing Inc, Temple
Mike Sant, 254-791-6943

* **Master's Builders, Inc, El Paso**
Rick Prat, 915-532-1007

* **MEDCO Construction, LLC, Sunnyvale**
Rod Luedtke, 214-820-9449

* **MGC Inc., Houston**
David Mahood, 713-800-7300

* **Millennia Cabinetry Inc., Helotes**
Mia Elizalde, 210-688-3107

* **NC Group, Inc., Houston**
Daniel Tamez, 281-459-9418

* **Panel Specialists, Inc., Temple**
Matthew Robinson, 254-774-9800

* **Phoenix Millwork, Alvin**
Ian Hamilton, 281-388-2211

* **Pioneer Architectural Millwork, Houston**
Robert Crane, 713-461-8203

* **Pioneer Millworks, Inc., Amarillo**
Danny Castleman, 806-622-3201

* **Quality Mill Work by Brownco, LLC, Rowlett**
Jerry Brown, 214-830-4113

* **Quest Millwork, Stafford**
Jon Deutser, 832-391-3534

RD & S School Equipment Co., LLC, Marion
Ronald Dudo, 830-708-3777

* **Robert Shaw Mfg. Co., Inc., Fort Worth**
Julie Shaw, 817-927-2557

* **Roomi Group Corporation, Houston**
Faisal Hussain, 281-405-8165

Signature Cabinets, Dallas
Perry Hix, 214-688-1966

Signature Millwork, Dallas
Signature Millwork, 972-241-9535

SRG Solutions, LLC, Houston
Kenneth Urban, 281-214-8560

Tesco Learning Environments, Bellville
Justin Hardy, 800-699-5824

Texas Wood Supply, Donna
Jason Seal, 956-464-0560

Tomco, Inc., San Antonio
Tom McGee, 210-270-9510

* **Top Notch Cabinet Installation Inc., Manvel**
Pete Meade, 832-548-1483

Top-Drawer Cabinetry LLC, Houston
Mark Hanz, 832-300-2300

* **Trautschold Millwork, Ltd., Waco**
Mike Sheedy, 254-752-6547

Triton Industries dba Millwork Services, San Marcos
Crystal Griffin, 512-805-0665

Tyler Wood Works, Inc., Troup
Connie Switzer, 903-842-2443

* **Valcour Casework Inc., Helotes**
Edward Clukey, 210-695-2155

Watson & Cochran Inc., Dallas
Kyle Cochran, 214-943-2033

Wood Perceptions, LLC, Dallas
Abraham Alfaro, 214-391-7373

Woodhaus, Carrollton
Jeff Dale, 972-245-8117

Utah

* **Anvil Cabinet & Mill, Brigham City**
Melanie Leishman, 435-723-5001

* **Associated Fixture Manufacturing Inc., Magna**
Scott Colledge, 801-250-7620

* **Boswell Wasatch Mill, Springville**
Chris Boswell, 801-489-7527

Clients Design Inc, North Salt Lake
Richard Brack, 801-296-1698

* **Contempo Cabinet & Mill, Salt Lake City**
Scott Carroll, 801-886-9111

* **Fetzers' Incorporated, West Valley City**
Wallace Fetzter, 801-484-6103

Fondell Architectural Woodwork, Inc., Lehi
John Kusterle, 801-768-4467

* **Granite Mill & Fixture, Salt Lake City**
Kale Stevenson, 801-467-3222

* **Huetter Mill & Cabinet Inc., Murray**
Heath Harkey, 801-263-9437

Legacy Mill & Cabinet LLC, North Salt Lake
Kurt Draper, 801-292-0795

* **Mapleleaf Cabinets, Inc., West Valley City**
Kevin Affleck, 801-262-7741

* **Masterpiece Commercial Millwork, Lindon**
Darren McCabe, 801-406-9950

* **Montgomery Custom Cabinets, Inc., West Jordan**
Jeremy Anderson, 801-679-9941

* **Riverwoods Mill, Inc., Saint George**
Chris Peterson, 435-673-4145

Smith Stone Supply, Inc., Ogden
Michael Smith, 801-710-2998

Virginia

* **Annandale Millwork & Allied Systems Corp., Winchester**
Robert Frogale, 540-665-9600

* **Arboleda Cabinets Inc., Richmond**
Guillermo Arboleda, 804-230-0733

* **Ashland Woodwork, Inc., Ashland**
J. Clay Stiles, 804-798-4088

* **BILTCO LLC, Lorton**
Fernando Lamas, 703-372-5940

* **Blair Dumond Inc., Richmond**
Chris Saltonstall, 804-359-2090

* **Campostella Builders, Norfolk**
Doyle Palmer, 757-545-3212

Cavanaugh Cabinets, Charlottesville
Jim Cavanaugh, 434-977-7100

Charles Yost Custom Cabinets, Newport News
Charles Yost, 757-873-2147

* **Clark's Lumber & Millwork, Inc., Ruther Glen**
Roger Clark, 804-448-9985

Coastal Creations, Inc., Virginia Beach
Jeffrey Beavers, 757-468-9613

Columbus Woodworks, Inc., Lynchburg
Tim Columbus, 434-528-1052

* **DK Finishing, Sterling**
David Klamer, 703-439-8702

Dominion Millwork Company, Inc., Manassas
Sam Shin, 703-372-1911

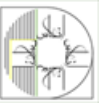
Eubank Contracting, Fredericksburg
Brandon Eubank, 540-272-9482

Fairfax Woodworking, Inc., Manassas
Andrew Kim, 703-339-9578

* **Five Star Fab & Fixture, Salem**
Bryan Wilkinson, 540-444-0456

* **Gaithersburg Cabinetry & Millwork, Warrenton**
Stephan Smith, 540-347-4551

* **Hackney Millwork, Inc., West Point**
Gene Hackney, 804-843-3312





Firms in BOLD with asterisk are LICENSED participants in the AWI Quality Certification Program as of the print date. For an up-to-date status go to awiqcp.org.

- * IBS Corp., Manassas**
Paul Bell, 703-631-4011
- Ideal Building Supply Inc., Rocky Mount**
Cecil Hodges, 540-483-5511
- * J. T. Wood Products, Inc., Petersburg**
Jody Bakay, 804-733-8550
- Jefferson Millwork & Design, Inc., Sterling**
Michael Corrigan, 703-260-3370
- * Julian Swain Builders, Inc., Norfolk**
Julian Swain, 757-459-8000
- * Karn Custom Woodwork, Richmond**
Kenneth Kueny, 804-213-0300
- * Kearney & Associates, Inc., Culpeper**
Patrick Kearney, 540-423-9511
- * Key Woodworking, Inc., Springfield**
Ken Lee, 703-914-2526
- M.R. Dishman and Sons, Inc., Danville**
Trevor Owen, 434-685-3911
- Mark of Excellence, Leesburg**
Mark Iverson, 302-633-3450

- * Merchants Fixture, Ashland**
Brandon Wright, 804-798-9804
- Mid-Atlantic Casework, LLC., Falmouth**
Shannon Mauro, 540-479-3390
- * Nielsen Builders, Inc., Harrisonburg**
Scott Lipscomb, 540-434-7376
- Nycom Inc., Midlothian**
Jonathan Nystrom, 804-794-3044
- * Paragon Casework, Chantilly**
Steve Humes, 703-802-1517
- * Potomac Architectural Millwork Corp., Woodbridge**
Nelly Mori-Giammerino, 703-440-6800
- * Premier Millwork and Lumber Co., Virginia Beach**
George Melnyk, 757-463-8870
- * Rockwood Specialties, dba Serenity Cabinets & Millwork, Bassett**
Bradley Smart, 276-627-8010
- S & T Commercial Cabinets LLC, Hampton**
John Nissen, 757-726-2802
- Shaffer Cabinet Works, Inc, Vernon Hill**
Eric Shaffer, 336-215-1591
- Tidewater Architectural Millwork, Virginia Beach**
James Sykes, 757-965-3303

- * Virginia Casework Corp., Springfield**
Enrique Angulo, 703-520-1000
- Virginia Millwork, Richmond**
James Hamilton, 804-266-5264
- * Wellingford Millwork, LLC., Manassas**
Jim Powers, 571-379-5500
- * Wilcox Woodworks Inc., Manassas**
Daniel Wilcox, 703-369-3455

- * Interior Woodworking Specialists, Redmond**
Tracey Hepner, 425-881-1328
- * ML Fox Construction LLC, Everett**
Lori Fox, 425-397-6965
- Neucor Inc., White Swan**
Janice Marton, 866-638-2671
- Northwest Millwork, Seattle**
Brian Carlson, 206-284-6440
- Pearson Millwork, Inc., Arlington**
Kirsten Ingham, 360-435-9516
- Skagit Architectural Millwork, Mount Vernon**
Weston Wells, 360-336-9587
- * Specialty Wood Manufacturing, Tacoma**
Sonja Kallam, 253-531-1335
- * Ted Pancoast Woodworking, Kettle Falls**
Ted Pancoast, 509-675-5822
- W.W. Wells Millwork LLC, Everett**
Steve Oswald, 425-259-9155

West Virginia

- * Allegheny Restoration & Builders, Morgantown**
Donna Murray, 304-381-4820
- * Architectural Wood, LLC, Ronceverte**
Don Finnegan, 304-647-3300
- * Chandler's Plywood Products, Huntington**
Bruce Mosser, 304-429-1311
- * Mott Manufacturing, LLC, Maxwelton**
Doug Walton, 304-497-2115
- * Plastic Sales Corporation, Charleston**
Andrew Carey, 304-744-9441
- Wilson Quality Millwork, Inc., Elkins**
John Wilson, 304-636-9096

Washington

- * AAA Cabinets & Millwork Inc., Airway Heights**
Tim Stewart, 509-484-7152
- * Cabinet Tech, LLC, Yakima**
Jason Cook, 509-575-0180
- * Central Cabinet Systems, Tacoma**
Gabe Kettler, 253-830-2409
- Commercial CabinetWorks, Ridgefield**
Charles Day, 360-857-3130
- * Custom Craft LLC, Sumner**
Todd Hegstad, 253-826-5450
- * Custom Source Woodworking, Inc, Tumwater**
Joe Wadsworth, 360-491-9365
- * Genothen Casework, Tumwater**
Terese Dwinal, 360-352-3636
- Huntwood Industries, Liberty Lake**
Jim Williams, 509-924-5858
- * In Store Services, Inc., Seattle**
Jeff Graham, 206-682-3934
- * Interior Wood Products, LLC, Olympia**
Dave Newlean, 360-352-7273

Wisconsin

- * Architectural Forest Products, Two Rivers**
Jason Krings, 920-793-4404
- * C.L.S. Custom Laminating Specialists, Green Bay**
Jody Fuller, 920-434-4266
- * Carley Wood Associates, Inc., Madison**
Robin Carley, 608-249-7444
- Cathedral Builders, Inc., Jackson**
Jody Giacomini, 262-250-1985
- * Central Wisconsin Woodworking, Weston**
Scott Fletcher, 715-675-4491
- ConceptWorks, Elkhart Lake**
Andy Cleven, 920-565-3099
- County Line Design LLC, Sun Prairie**
Paul Novotny, 608-772-1409
- * Discher Architectural Millwork, Oshkosh**
Bruce Discher, 920-235-6500
- Diversified Woodcrafts Inc., Suring**
Greg McClure, 920-842-2136

INDEX TO ADVERTISERS

Adservco	6
Art For Everyday . Inside Back Cover	
AWI Speakers Bureau	48
AWI Standards	10
Biesse	15
Brooklyn Hardware	53
CCF	12
ChemCraft	7
Daiek Woodworks	11
Eagle Mouldings	27
Federated Insurance	9
Flexible Materials	49
Häfele	49
Höcker North America	11
IMA Schelling	49
Gemini Coatings	27
M. Bohlke Veneer	27
Milesi	8
M.L. Campbell	11
Monarch Metals	8
Navy Island	Inside Front Cover
Precision Veneer	2
ProPly	6
Quality Certification Program	26
Roseburg	48
Sherwin Williams	48
South Shore Millwork ... Back Cover	
States Industries	48
Stiles Machinery	4
TradeSoft	1
VT Industries	12
Zepsa Stairs	5



DLM Holdings LLC, Green Bay
Mark Baker, 920-593-7979

Elipticon Wood Products, Little Chute
Doug Gilbert, 920-788-9322

Glenn Rieder, Inc., West Allis
Jackie Fessenbecker, 414-449-2888

Grommes Millwork Inc., Beloit
Douglas Clark, 608-362-8928

Hillcraft of Wisconsin, LLC, Madison
Adrienne Sickenberger, 608-221-3220

* **Joseph A. Interiors, De Pere**
Thomas DeLeers, 920-347-5850

* **Lange Bros. Woodwork Co, Inc., Milwaukee**
Randy Lange, 414-466-2226

* **Midwest Millwork & Casework dba Creative Laminates, La Crosse**
Joe Neitzel, 608-783-5575

* **Nature-Tech, LLC, Milwaukee**
Jay Hollingsworth, 414-745-5949

* **O'Keefe Incorporated, River Falls**
Brian Troska, 715-425-8981

* **Oshkosh Door Company, Oshkosh**
Merle Visser, 920-233-6161

Stuck Wood Works Inc., Milwaukee
Jeff Stuck, 414-351-5595

Trimpac, LLC, Stratford
Luke Moore, 715-384-4144

* **Wisconsin Built, Inc., Deerfield**
Dan Petersen, 877-928-4589

Wood Design Inc., Fort Atkinson
Lee Moldenhauer, 920-563-4833

Wyoming

* **Pinnacle Cabinet & Millwork, Inc., Cheyenne**
Gary Everett, 307-632-7497

Bahrain

Havelock AHI WLL, Manama
Jihad Raad, +973 97317832059

Kooheji Contractors, Manama
A Rahim Al Kooheji, +973 97317704037

CANADA: British Columbia

CN Architectural Millwork & Construction, Burnaby
Chandra Nair, 604-299-8715

* **Nikolai Manufacturing Inc., New Westminister**
Robert Roe, 604-525-8495

Peregrine, Burnaby
Brian French, 604-251-3174

* **Towne Millwork Ltd., Abbotsford**
Tyler Heskett, 604-850-7738

Manitoba

Innovative Manufacturing Group Inc., Winnipeg
John Seniuk, 204-224-9409

Nova Scotia

* **Nova Wood Products Ltd., Lunenburg**
Scott McVittie, 902-634-4120

Ontario

* **CIF Lab Solutions LP, Vaughan**
Gustavo Grynszpan, 905-738-5821

* **Concept Millwork Corporation, London**
Sandy McTavish, 519-668-6154

Doorland 2000, Woodbridge
Sergio Granzotto, 905-850-5190

* **Mirmil Products, Trenton**
Travis Walker, 613-394-1022

Provincial Store Fixtures Ltd., Mississauga
Edward Joubran, 905-564-6700

Quebec

Baillargeon Doors, Saint-Ephrem-De-Beauce
Normand Deschenes, 418-484-5666

* **Beaubois Group Inc., Saint-Georges**
Francois Lacombe, 418-228-5104

Classic Woodwork Inc., Sainte-Therese
Maxime Deraspe, 450-437-3327

* **Lambton Doors, Lambton**
Marc Blain, 418-486-7401

Polybois, Inc., Thetford Mines
Luc McCutcheon, 418-338-4638

Que-Wood Mouldings, St-Jerome
Daniel Warnet, 450-430-0825

Hong Kong

* **Dongguan Sundart Home Furnishing Co., Hong Kong**
Richard Boo, 852 86769912

Kuwait

Sahara United Carpentry Company, Safat
Helmy Sanabary, +965 65011911

Lebanon

INTRAMURO, Beirut
Karim Majdalani, +961 1737306

Mexico

DMX Shopfitting & Display, S.A. DE C.V., Iztapalapa
Carlos Westerman, 52 55 5018 9000

Oman

S&T Interiors And Contracting Co., Muscat
Mihirson Raghupathy,, 968 22083000

Qatar

Almised For Wooden Products & Aluminum Co., Doha
Alwaleed Almised, +974 44600014

Almuftah Carpentry, Doha
Tarek Shehab, +974 44181862

Galleria Art, Doha
Kamal Radi, +974 44771588

Ismail Bin Ali Joinery & Interiors, Doha
Hassan Ismail Alemadi, +974 44600511

Saudi Arabia

Al'Aalami Factory for Furniture & Wooden Ind., Riyadh
Faisal Kanaan, +966 557 865 402

AL DREES Industrial & Trading Co., Riyadh
Mohammad Riaz, 966 112044444

AL KUHAIMI Wood Industries, Dammam
Naser Ababneh, 966 96613811

Binladin Woodwork Factory Co. Ltd., Jeddah
Zafer Karaman, +966 126200163

INEX - Int'l. Expertise for Wood Industries Ltd., Jeddah
Ridwan Hubaiti, +966 2635 2213

Saudi Binladin Group Production Center, Jeddah
Syed Abrar Ahmed, +966 2 2250 173

South Korea

ADMATRADE, Yongsangu
+82 82704111

I-Des Interior & Furniture Inc., Incheon
Byung Sam Min, 82-032-578-0102

Turkey

* **Nergiz Decoration Ltd. Co., Ankara**
Kenan Nergiz, +90 3123981103

* **Papirus Ahsap Dekorasyon, Istanbul**
Fisun Erman, +90 2122503434

United Arab Emirates

Abanos Furniture & Decoration Industry, Dubai
Ashraf Mansour, (9714) 899-6111

Advanced Industries Group, Dubai
Imthiyas Chanath, 971 4 380 5844

Alpha Star Wood Joinery LLC, Dubai
K Kumar, (9714) 340-0214

* **Interiors International FZCO, Dubai**
Siraj Noorani, (9714) 886-2627

Leader LLC, Dubai
Shaban Alfaleet, 009 (714) 333 3331

Royal Joinery, Abu Dhabi
Yashar Shaar, (9712) 551-4999



AWI Supplier Members

Firms in **BOLD** with asterisk are **LICENSED** participants in the **AWI Quality Certification Program** as of the print date. Firms listed in **GOLD** are **sponsors** and/or **advertisers**.

2020 Technologies
514-332-4112 2020spaces.com

3form
801-994-8158 3-form.com

A2 Zdraft.com Millwork Shop Drawings
85 599 900 6218 zdraft.com

Accuride International
888-459-8624 accuride.com

Adservco Group
48 12 637 48 49 adservco.com

AdvancedDimensions.com (Dirig Design)
607-988-4040 advanceddimensions.com

Aljoe Woodwork Consultants
917-520-1100

Alliance Millsoft
800-721-2189 alliancemillsoft.com

American Laminates, Inc
209-869-2536 americanlaminates.com

AOSCAD
312-414-0227 millworkdrafting.services

Architectural Finishing Solution, Inc
714-630-4030 afinishing.com

Architectural Fixtures, Inc.
847-562-9944

Architectural Woodwork Services, LLC
765-647-3567 awswood.com

Archmaya Inc.
248-981-7495 archmaya.com

ARK Woodwork Inc.
561-809-7957 arkwoodwork.com

Art for Everyday, Inc.
416-645-5120 artforeveryday.com

Art Magic Carpentry
204 91 20002 artmagic.on.ca

Association of Woodworking and Furnishings Suppliers (AWFS)
323-215-0317 awfs.org

Atlantic Plywood Corporation
781-933-3830 atlanticplywood.com

Axalta Coatings Systems
336-802-4768 axaltacoatingsystem.com

Bath/Kitchen & Tile Supply Co.
302-992-9220bathkitchenandtile.com

Biesse America, Inc.
704-357-3131 biesseamerica.com

Blacks Outsourcing, Inc.
262-895-4015 blacksoutsourcing.com

Blum Inc.
704-827-1345 blum.com

Boyce Highlands Inc.
603-753-1042 BoyceHighlands.com

Brooklyn Hardware Manufacturing Inc
503-232-1171 panelclip.com

Brookside Veneers, Ltd.
609-409-1311 veneers.com

CT Finishing, Inc.
909-629-7402 ctfinishing.com

Casewood, LLC
360-339-4872 casewood.net

CCF Industries
800-581-3683 ccfdrawers.com

Central Iowa Architectural
641-847-0565

Chabros Timber Trading LLC
+971 97142672280 chabros.com

Charles F. Shiels & Company
513-241-0239 shielslumber.com

Chemcraft
336-841-5111 chemcraft.com

Collins Aerospace
812-704-5200 BoothVeneers.com

Columbia Forest Products Inc.
503-224-5300 columbiaforestproducts.com

Contact Industries
503-802-4482 contactind.com

Convergence Carpentry
703-253-3574

Cornerstone Interior Woodworking Inc.
260-357-0754 cornerstoneinteriorwood.com

Craftsmanship Installations, Inc.
919-286-3000 craftsmanshipinstallations.com

Cre8tive Technology & Design
858-457-2786 ctnd.com

Crider's Finishing
703-661-6520 cridersfinishing.com

Crown Veneer Corp.
610-869-8771 crownveneer.com

Custom Caseworks
320-259-5190 customcaseworks.com

Custom Crafted Door
309-527-5075

Custom Plywood Inc.
812-944-7300

Darlington Veneer Co., Inc.
843-393-3861 darlingtonveneer.com

Diamond Vogel - Industrial Wood Coatings
920-467-7850 diamondvogel.com

Dimension Plywood, Inc.
812-944-6491 dimensionhardwoods.com

*** Diversified Educational Systems**
540-687-7060 des.com

Dixie Plywood & Lumber Companies
912-447-7090 dixieply.com

DLI Incorporated
561-586-1118 dliincorporated.com

DMC Millwork Consultation
719-488-2759 millworkconsultant.com

Dooge Veneers, Inc
616-698-6450 doogeveneers.com

Drafting Solutions Inc.
513-745-9732 draftingolutionsinc.com

Drawer Connection, Inc
480-917-4887 drawerconnection.com

Duratherm Window Corporation
207-872-5558 durathermwindow.com

E.B. Bradley Co
323-585-9201 ebradley.com

Eagle Mouldings
763-493-2995 eagle-aluminum.com

Elkwood Installation Services
717-354-6618elkwoodconstruction.com

Etemplate Systems
919-676-2244 etemplatesystem.com

ETR Woodwork Installation, Inc.
561-674-3663

FABA-USA
570-807-1216 faba.pl

Federated Insurance
800-533-0472 federatedinsurance.com

Felder Gruppe
302-322-7732 felderusa.com

Festool USA
888-337-8600 festoolusa.com

Fixture-Pro, Inc.
707-545-3901 fixture-pro.com

Flex Trim by Carter Millwork
800-861-0734 flextrim.com

Flexible Materials, Inc.
812-280-7000 flexwood.com

Florida Stairworks & Carpentry LLC
239-489-1177 flordastair.com

FormWood Industries, Inc.
812-284-3676 formwood.com

Fritz Kohl GmbH & Co. KG
+49 49093537950 veneerwood.com

Fritz Kohl Middle East L.L.C.
09353 - 795-0 veneerwood.com

Fry Reglet
626-676-7114 fryreglet.com

Fulterer USA
336-431-4646 fultererusa.com

Gemini Industries, Inc.
405-262-5710 gemini-coatings.com

Gleeson Construction Inc.
440-247-8775 gleesonconstruction.com

Global Millwork Services
732-781-5270 globalmillworks.com

GoKeyless
937-247-9327 gokeyless.com

Graham Division of ASSA ABLOY, Inc.
417-616-8237 grahamdoors.com

Grass America Inc.
336-996-4041 grassusa.com

Greenline Industries Inc.
843-846-4648 greenlineforest.com

Gulf Trade Link FZCO
+971 555669533 fireban.net

*** H.J. Martin and Son**
920-544-4232 hjmartin.com

Häfele America Co.
336-434-2322 hafele.com/us

Haley Brothers, Inc.
714-670-2112 haleybros.com

Hardline Corporation
231-276-0170 hardlinecorp.com

Hardware Resources
800-463-0660 hardwareresources.com

Hargrave Builders, Inc.
847-742-7828 hargravebuilders.com

Healy Drafting
620-404-8243 healydrafting.com

Heidler Hardwood Lumber Co.
773-847-7444 heidlerhardwood.com

Heitink Plywood Technologies, Inc.
812-336-6436 heitink.us

Herzog Veneers, Inc.
336-434-4053 veneeronline.com

Hettich America L.P.
800 777 1772 hettich.com

Hi Tech Veneer
812-284-9775 hitechveneer.com

Höcker North America
616-881-3328 hockeramerica.com

Hoffmann Machine Company, Inc.
828-430-4510 hoffmann-usa.com

Holden & Flynn Universal Contr. Inc.
917-256-0329

IMA Schelling Group USA
919-544-0430 imaschelling.us

Indiana Architectural Plywood
317-878-4822 iaplywood.com

INNERGY
320-267-4025 innergy.com

Intermountain Wood Products
801-486-5414 intermountainwood.com

Interwood Forest Products, Inc.
502-633-0017 ifpveneer.com

*** ISEC Inc.**
303-790-1444 isecinc.com

JC Wood Installations
305-335-8622 jcwoodservices.com

JD James, Inc.
850-997-8585 jdjamescorp.com

Jim Mammina Consulting, Inc.
360-999-8785 jmconsult.us

KegWorks
716-362-9212 kegworks.com

Kerfkore Company
912-264-6496 kerfkore.com

Kinon Surface Design, Inc.
561-600-2500 kinon.com

Klingspor Abrasives, Inc.
828-322-3030

*** Latta Construction-Texas, LLC**
214-596-1744 lattaconstruction.com

Lenmar Mfgd by Benjamin Moore & Co.
800-225-5554 lenmar-coatings.com

Leuco Tool Corporation
770-459-5784 leucotool.com

Lewis Lumber Products, Inc.
570-584-4460 lewislp.com

Lockdowel, Inc.
650-477-7112 lockdowel.com

Lynden Door, Inc.
360-354-5676 lyndendoor.com

M. Bohlke Veneer Corporation
513-874-4400 mbohlkeveneer.com

M.L. Campbell Company
216-515-7784 mlcampbell.com

Materials Inc.
201-968-0101 materialsinonline.com

Merrill Lynch
719-630-6060

Metrie
623-326-0121 metrie.com

Microvellum Software
541-664-1625 microvellum.com

Milesi Wood Coatings
407-506-4913 milesi.us

MOCORP Inc Custom Metal Fabrication
763-441-9978 mocorpinc.net

Monarch Metal Fabrication Inc.
631-563-8967 monarchmetal.com

Nationwide Fixture Installations, Inc.
763-540-0351 nfi-usa.com

Navy Island, Inc.
651-451-4454 navyisland.com

New Earth Wood Company
800-572-8713 newearthwoodcompany.com

Newman Lumber Co
228-832-1899 newmanlumber.com

*** Newtech Installation USA Inc.**
860-344-1261 newtechinstallation.com

Nightingale Architectural Doors
972-875-1134 nightingaledoors.com

*** Noreaster Installations Inc.**
860-376-0555 noreaster-installations.com

*** Northeast Interior Systems, Inc.**
401-721-5600 neis.cc

*** Northway Industries**
570-837-1564 northwayind.com

NPF Consultants
410-480-9757 crownsnestsoftware.com

Numatic Finishing Corporation
253-939-2391

Oakwood Veneer Company
248-720-0288 oakwoodveneer.com

OHC
251-330-7716 ohc.net

Ohio Valley Door Corporation
812-945-5285 ohiovalleydoor.com

Olympus Lock Inc.
206-362-3290 olympus-lock.com

Orange Aluminum
877-464-2181 orangealuminum.com

Oregon Door Company
541-679-6791 oregondoor.com

Osborne Wood Products Inc.
706-886-1065 osbornewood.com

Pacific Architectural Wood Products Inc.
503-284-0024

Paragon Enterprises, Inc.
865-212-4170 millworkcadcam.com

Patrick Industries, Inc.
574-294-7511 patrickind.com

Pennsylvania Lumbermens Mutual Ins. Co.
800-752-1895 plmilm.com

People Logic Software Corp.
250-475-1392 peoplelogicssoftware.com

Ply-Tech Corporation
270-678-2941 plytechcorp.com

Pollmeier, Inc.
503-349-5807 pollmeier.com

Precision Drive Systems, LLC
704-922-1206 pdsspindles.com

Precision Glass Bending Corporation
479-996-8065 e-bentglass.com

Precision Veneer Products
519-758-0960 precisionveneer.com

Pro-Ply Custom Plywood Inc.
905-564-2327 proply.com

Raster Engineers
312-758-5678 rasterengineers.com

Renaissance Specialty Veneer Products Inc.
812-375-1178 rsvpveneer.com

Resource Engineering, Inc.
352-332-0767 resourceengineering.com

ReX Lumber Company
978-263-0055 rexlumber.com

Richelieu America Limited
716-893-9663

Richwood Industries, Inc.
616-243-2700 richwoodind.com

Rockwood Door & Millwork
330-893-2392 rockwooddoor.com

Roseburg
541-679-3311 roseburg.com

Roy Metal Products
418-259-2711 roymetalinc.com

RSA Solutions
866-930-0772 rogershaw.com/

Rudd Company Inc.
800-444-7833 ruddcompany.com

S & S Craftsmen, Inc.
813-247-4429 s-scraftsmen.com

*** S. J. Morse Company**
304-856-3423 sjmorse.com

Salice America, Inc.
704-841-7810 saliceamerica.com

Saunders Wood Specialties
715-762-3916 saunderswood.com

SCM Group North America
770-813-8818 scmgroup-usa.com

SD Verret Company
804-794-2001 sd-verret.com

Select Door
800-535-9335 selectcustomdoor.com

Sherwin Williams Company
216-566-1688 oem.sherwin-williams.com

Shows Leary Millwork Management
518-482-3222 showsleary.com

*** Sieling & Jones Inc.**
717-235-7931 sielingandjones.com

SingCore
360-495-3577 singcore.com

Smartware LLC
919-697-0104 architecturalwoodworkconsultants.com

Somerset Door & Column
814-444-9427 doorandcolumn.com

Southern Premier Millwork LLC
727-359-9157 southernpremiermillwork.com

SR Wood, Inc.
812-288-9200 srwoodinc.com

Star Hanger Systems
803-730-4463 starhanger.com

Star Moulding & Trim Company
708-458-1040 starmoulding.com

States Industries LLC.
541-688-7871 statesind.com

Stiles Machinery, Inc.
616-698-7500 stilesmachinery.com

Superfici America, Inc.
704-875-8751 superficiamerica.com

Sweetwater Lumber & Land Co., Inc.
770-941-4932 sweetwaterlumber.com

Talbert Architectural Panels & Doors, Inc.
714-671-9700 talbertusa.com

The Combination Door Company
920-922-2050 combinationdoor.com

The Maiman Company
417-862-0681 maiman.com

The Wood Gallery Inc.
972-869-9161 woodgallery.biz

Timber Products Company
541-747-4577 timberproducts.com

TNS Specialty Products LLC
201-484-7243

Trace Works LLC
313-995-8104 traceworksllc.com

Tradesoft, Inc.
770-579-9096 tradesoftinc.com

Upstate Door, Inc.
585-786-3880 upstatedoor.com

Veneer One
516-536-6480

Veneer Technologies, Inc.
252-223-5600 veneertech.com

Vicwood Group
+86 51265393117 acfairbankconsulting.ca

VT Industries, Inc.
800-827-1615 vtindustries.com

WEINIG/HOLZ-HER
704-799-0100 weinigusa.com

Western Dovetail Inc.
707-556-3683 drawer.com

White Space
775-746-5184 int-sourcing.com

Wilsonart
800-433-3222 wilsonart.com

Woodtech Trading Company
406-892-5140 woodtechdoor.com

Wurth Louis and Company
714-529-1771 louisandcompany.com

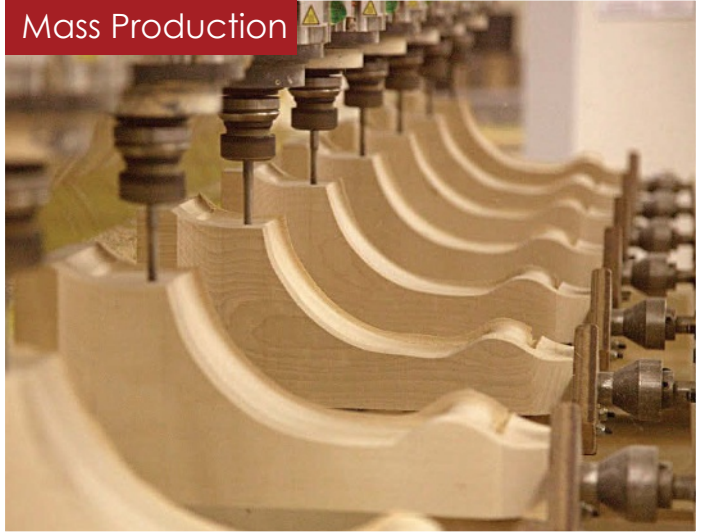
ART FOR EVERYDAY^{INC.}

North America's largest manufacturer & designer of architectural woodcarvings.
1.866.850.2680 ■ info@artforeveryday.com ■ www.artforeveryday.com

Custom Woodcarving



Mass Production



Restoration Projects



1,500 stock SKU including solidwood textured panel



Commercial Projects



Residential Projects



آموزشگاه انعکاس منبع جدیدترین اطلاعات، مقالات و دوره‌های آموزشی دکوراسیون داخلی



SOUTH SHORE
est. 1991
MILLWORK



NO IS NOT AN OPTION!

At **South Shore Millwork** we push the limits of what is possible with millwork and take on specialty projects that others will not or cannot perform. Our motto is "No is not an Option!" Some of the "special projects" we have said yes to include shop-built complex roof structures, custom hand split old growth cypress shingles, radius concrete formwork with embossing, and custom fire rated doors.

From the initial concept and planning phases through construction, the exceptional team at **South Shore Millwork** will manage your project with exacting attention to quality and detail. Our goal is to bring your vision into reality while keeping you informed and happy, no matter how difficult the job.



100% SOLAR POWERED

South Shore Millwork has a state-of-the-art solar farm which produces 100% of the electricity required to run our 80,000 SF manufacturing plant. Our sustainability program has made us one of the "greenest" in the business.



آموزشگاه انعکاس منبع جدیدترین اطلاعات، مقالات و دوره‌های آموزشی دکوراسیون داخلی

Enekas.Academy

Enekas.Academy

