

better

interiors

IDEAS AND DESIGN FOR BETTER LIVING

DESIGN REVOLUTION

Architect Akshat Bhatt of Architecture Discipline takes artistic license with bold lines and brilliant pops of colours to turn a sprawling 8,400 luxury condominium in Gurugram into a living gallery of modern design



BEST BUYS

75 handcrafted furnishings, furniture and decor accessories to give your home a warm, personal touch

WORK VOGUE

Interior designer Smita Thomas raises the bar for alternative workspace design with the futuristic sci-fi-inspired office space of ITW Consulting in Bengaluru



Contents

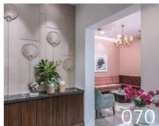
JUNE 2018



036



094



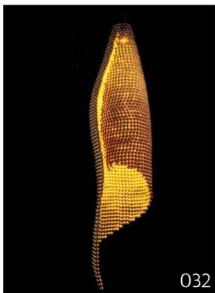
070



078



086



032



108

036 Bazaar ARTISANAL MARVELS

In a world where most things are mass produced, handcrafted creations are a symbol of hard work, creativity and painstaking labour all wrapped up in a personal story. Celebrating this spirit and beauty of everything handmade is this ensemble of furniture, furnishings and home decor accessories.

054 Habitat BRIMMING WITH BRIO

Filled with character, the design of the 8,400-square-foot Gurugram penthouse — by architect Akshat Bhatt of Architecture Discipline — juxtaposes well-designed modern interiors with a blend of furniture and art to spectacular effect.

070 STRIKINGLY SUBTLE

By employing a pastel colour palette, elegant materials and textural elements, P&D Associates design a bungalow in Bharuch that speaks of quiet elegance and minimalistic beauty.

078 9 To 5 A FUTURISTIC CUBE

With movie classics such as Her, Passengers and Blade Runner 2049 as stimulus, interior designer Smita Thomas of Multitude of Sins creates a modern, colourful and exciting office space for ITW Consulting in Bengaluru.

086 Off the Shelf A CUT ABOVE

Taking the shape of a turtle's shell as its muse, architect Andrea Milani of Italy-based Studio Milani creates a gallery-like atmosphere for a showroom in Bengaluru — designed to highlight the splendour and uniqueness of marble, granite and semi-precious stones.

094 Space & Spice THE KUBE ROUTE

Created by architects Mayur Gajare and Deval Shah of Saga Design Architects, the stylish Kube club and lounge in Mumbai boasts of a raw aesthetic achieved through the inspired usage of everyday materials, lighting and greenery.

Regulars

- 020 Roundabout
- 026 Art Walk
- 028 Eco Beat
- 030 High Five
- 031 Pick of the Month
- 032 Swiss List
- 108 Gallery
- 114 Directory



Cover photograph:
Jeetin Sharma,
Courtesy Architecture
Discipline
Turn to 'Brimming with
Brio' on page 54

Write back



OUT-OF-THE-BOX

The entire May 2018 issue is extremely eye-catching and is a brilliant showcase of some amazing design talent in the country. I could hardly believe these super stylish stores and showrooms are in India. Only when I read every word of the article that I truly realized that Eigerbuck Chocolatier is a store for chocolates. At first glance I thought the feature was on some ballroom in a palace or a hotel. I've always liked the work of Aamir & Hameeda, but with this out of the ordinary project that celebrates Renaissance art in all its glory, I became a fan. The Kohler Experience Centre in New Delhi designed by Studio Lotus too looked nothing like a bath fittings store. The materials, the finishes, the chic way in which the washbasins and bathtubs are displayed really impressed me.

RAJIV LOHIA, NEW DELHI



DIFFERENT DESIGNS

We are so used to a set format when it comes to the layout of a fashion store that when something like the Twelve AM-PM store in Bengaluru comes along, it can instantly attract you or make you question. In my case, while I could not immediately relate to the design, once I read the article and understood the thought behind it, I was amazed. Really loved the way Play Architecture has reinterpreted



Letter of the month

Sculpted Light

W

LETTER OF THE MONTH

I really liked the idea of dedicating the 13th anniversary issue on retail design. Nowadays most stores and showrooms pay a great deal of attention on the design and the impact that a space creates apart from the products that are on display is tremendous. Therefore, the idea of using a picture that focusses on a single element (lights) from the Dbel Studio for the cover too was extremely refreshing. My favourite project of the lot (difficult as it was to pick) is the Bombalm store in Kolkata designed by the firm Open to Sky. Loved the way architect Aminesh Nayak has used concrete on the flooring of the entire store that is situated in a colonial bungalow. What I found most interesting about the Bon Vivant Collection store was the way the space flows without the need for walls. The Cube (featuring the bedroom collection) is a perfect example of this. Loved the idea of mirrored ceiling and suspended veneer partitions here. What a great effort by the team in compiling such a stellar issue. Kudos!

SMRIDHII SAXENA, BENGALURU

the idea of a Zen garden into a 3D matrix. Same goes for the way lights which have been showcased at the Dbel Studio. By the masterful way in which the lights have been incorporated into the design scheme, architect Sanchit Arora of RADIS has turned this studio into a light-art gallery.

ANNA ROSARIO, PUNE



SPILLING LUXURY

First of all a huge round of applause for the stunning

anniversary issue of **Better Interiors**. I am a fan of ayurvedic products and just Herbs being one of my favourite brand I was happy to know that the brand choose to go offline. The cozy retail outlet designed by Arch Lab seems adhering to its brand value with the use of biodegradable material palette. I also loved the Fiona Solitaires store designed by interior designer Ruchi Sharma. The custom made display cases, the clever usage of large mirror to make the area look spacious and the stunning facade took my attention. Last but not the least the magnificent Dtale store in Kerala has a breathtaking facade and mesmerizing ambience. I am still captivated by it!

KAMALPREET KAUR, LUDHIANA



PLUSH DECOR

The interiors of the jewellery brand Outhouse in Mumbai designed by Vritima Wadhwa has such a vibrant feel and look that I can't wait to step in the store. What caught my attention is the white shelves and cabinets, and the wall and floor lamps. However, the highlight of the store are the huge round mirrors with brass frame along with the white wicker backdrops. Another striking store design featured in the anniversary issue was the A D Retail store in Bengaluru showcasing a spectacular arch carved from wood instilling the necessary drama required for a store which is a part of a warehouse. I am sure the architect Akshya Heanjal's design philosophy has given justice to the client's expectations. Good work team Better Interiors.

KRUNAL SHAH, MUMBAI



INSPIRATIONAL DESIGN

The anniversary issue of **Better Interiors** is no doubt a plethora of design inspiration for a student like me. For instance, the Dev Mobile store in Rajkot designed by I-Con Architects is worth appreciating. The brick jaali, usage of waste wood and glass, the open to sky court... is all entralling. Also, the 8,000 sq ft Beyond Design store in Gurugram is a fine example of aesthetics imbued in true luxury. Hats off to the editorial team and many congratulations on your anniversary issue.

SUHANNA KAPOOR, NEW DELHI

KINDLY WRITE IN WITH YOUR RAVES OR RANTS TO:

deena.nair@nw18.com or post to The Editor, Better Interiors, Unit No 501, 5th Floor, Tower-1 One Indiabulls Centre, Senapati Bapat Marg, Elphinstone Road, Mumbai 400013

NOTE: CORRESPONDENCE WILL BE EDITED FOR PURPOSE OF LENGTH AND GRAMMAR.

آموزشگاه انعکاس منبع جدیدترین اطلاعات، مقالات و دوره‌های آموزشی دگوراسیون داخلی



Enekas.Academy



Enekas.Academy



Round About

A ROUND-UP OF WHAT'S NEW IN STORES, PRODUCTS, ART SHOWS AND MUCH MORE.

QUICK TAKE

MONTAUK RANGE BY VILLEROY & BOCH

Villeroy & Boch's new Montauk collection of tableware awakens the most beautiful associations of summer, sun and beach. A delicate rope structure graces the edges of white plates, bowls and platters as a characteristic relief in a clear, minimal design. Crystal glasses and stainless-steel cutlery in a matching Montauk look complete the table collection.

<http://www.genesisluxury.com/villeroy-boch>

ASTER CUCINE LAUNCHES DOMINA KITCHEN

Aster Cucine has launched Domina Kitchen range which is available in India through Ottimo. Domina kitchens are all about flowing designs that allow for taming of any space. Floating breakfast bars and shelves showcase a perfect blend of design and function.

Mobile: 9650244599, 8527009355

CUSHIONS BY STATEMENT PIECE

Statement Piece, the luxury home decor brand in New Delhi, has introduced an exquisite collection of cushions which are available in two trendy themes: the Bright collection and the Yellow & Grey collection.

Reflecting a casual, bold palette, this stunning collection will add a pop of colour and style to traditional and modern settings alike.

Mobile: 9310308477

Encraft's first experience centre in New Delhi



ENCRRAFT, THE PREMIUM UPVC windows and doors solutions provider, has opened their first experience centre in New Delhi. Located at 70, Okhla Industrial Estate, Phase 3, and spread over an area of 5,000 sq ft. This new space will showcase life-size products, actual doors and windows for customers to take a look at their functioning. At the centre's fabrication department,

one gets to know how a window or door is manufactured. At the Window Testing area, the products are checked for performance with water, wind, rain etc, against EN Standard using KS Schulten, Germany test rig. Through this centre the brand aims to address a multitude of questions that plague a customer while looking for perfect windows and doors.

www.encraft.in

Delhi Art Gallery gets a new identity

ESTABLISHED IN

1993, Delhi Art Gallery (earlier known as DAG Modern), completed 25 years of operations this year, and to commemorate this milestone, the gallery launched its new identity — DAG with the release of its new logo and website www.discoverdag.com. The new identity reimagines DAG not as a gallery, but as an institution. The portal makes Indian art universal and accessible, bringing people together in a world without boundaries. Mobile: 7042840519

Bosch launches top loading washing machines



BOSCH HOME APPLIANCES, , HAS LAUNCHED TOP loading washing machines in India, prior to its global launch.

Many households in India still prefer to hand wash their new and favourite clothes as they feel washing machines damage them. Resonating with this challenge, the brand has launched top loader washing machines with No Damage technology to cater to this consumer requirement. Some of the discerning features of this washing machine include PowerWave wash system; innovative design pulsator and Dynamic Water flow that results in perfect wash without damaging clothes; and a VariolInverter Motor that is powerful, silent and built to last with 10 years warranty on motor. www.bosch-home.in



Dreamline home fashion collection from India Circus



DREAMLINE, FUTURE GROUP'S HOME FASHION BRAND, HAS launched an exclusive collection in association with India Circus by Krsnaa Mehta. The India Circus collection from Dreamline features a wide range of home furnishing products designed by Krsnaa Mehta himself. This special collection takes inspiration from the rich Indian heritage and is a celebration of our vibrant culture. It uses motifs from glorious Mughal royalty, traditional floral as well as animal patterns, the famous road side cutting chai and many more. Products on offer include artistic linen bed sheets, smart bed runners, vibrant cushion covers, chic *dohars*, stylish towels, comforting chair pads and much more.

www.futuregroup.in

Saffronart to host 200th Summer Online Auction



SAFFRONART, WITH EIGHTEEN YEARS OF EXPERTISE AND leadership in pioneering art sales in India and abroad, will host its 200th Summer Online Auction on 13th and 14th June 2018. The auction will present 150 exceptional works of modern and contemporary Indian art. The artists represented span the evolution of the Indian art scene from the pre-Independence period to the present day, illustrating over a hundred years of art history. Each work epitomises the achievements of these artists, and has been chosen bearing in mind its provenance and historical contribution to Indian art. From Tyeb Mehta's rare and iconic *Kali* (1989) and Raja Ravi Varma's *Untitled (Shiva)* to a large, ochre canvas by Manjit Bawa and S H Raza's *Paysage Provençal - I (Cagnes)*, 1951 will be on auction. A total of 23 contemporary works by artists Subodh Gupta, Anju Dodiya, Jagannath Panda, Justin Ponmany to name a few, will be auctioned.

Mobile: 9820888743

Lutron opens new experience centre in Chennai



LUTRON INDIA, A MANUFACTURER OF ENERGY-SAVING, WIRELESS lighting and shade control systems, has inaugurated its new experience centre in Chennai. Spread over an area of 5,000 sq ft, the experience centre cum office space showcases a mix of Lutron's lighting controls and automated shading solutions such as Lutron HomeWorks QS and Lutron's residential motorized shading solution. The experience centre features seamless integration and intelligent controls of shades and lightings with the press of a button. Apart from these, the centre showcases the extensive product range of Lutron with scalable packages for customers with different needs and home sizes.

www.lutron.com

Foster + Partners masterplan new capital of Andhra Pradesh



LONDON-BASED FOSTER + PARTNERS HAS DESIGNED A NEW capital for Andhra Pradesh. Located on the banks of the river Krishna, this new administrative capital Amravati will mark the change in state boundaries between Andhra Pradesh and the newly created state of Telangana. Spread over 217 sq km, Amravati will centre on a governmental building with a needle-like roof. This governmental complex will stretch 5.5 km long and 1 km wide, with ribbon-like lakes weaving around tree-lined boulevards. Over 60 per cent of this core area will be occupied by greenery or water, with cycle paths, water taxis and routes for electric cars providing green transport options. Shaded streets and squares have been designed to encourage people to walk. A high court complex and mixed-use quarter with 13 urban plazas (signifying the 13 state districts) is also part of the masterplan.

www.fosterandpartners.com



BIG designs prototype cabin in New York



BJARKE INGELS GROUP (BIG) HAS designed a prototype house — the A45 — for the prefab-housing start-up Klein led by Danish interior designer Soren Rose. Inspired by the traditional A-frame cabin, the A45 takes on an angular form conducive to rain run-off and easy construction. The 180-square-foot

timber cabin can be built within four to six months in any location. The prototype Nordic abode constructed in Upstate New York has a minimal footprint of 183 square feet which includes an open-plan living and sleeping area with small cockpit, bath and a lofted area.

Source: Dezeen

Yin & Yang house by Penda features rooftop garden

ARCHITECTURE STUDIO PENDA FOUNDED by architects Chris Precht and Dayong Sun, has designed the Yin & Yang house near the German city of Kassel for a young family that wants to live and work in the countryside. The clients also wanted to live off-grid and have a self-sufficient lifestyle, where they can produce most of their own food at home. However, the compact nature of the site meant that the only space available to grow fruit, vegetables and herbs is the roof. Penda therefore designed the roof as a series of terraces incorporating planters that will create a usable garden occupying most of the building's footprint. Inspired by the Yin and Yang sign, the two main areas of the house are intertwined — one half for living, the other for working. The unusual roof shape features stepped levels that ascend from the centre of the house. The slopes surrounding the garden, channel rainwater to the ground where it is stored and reused on dry days to irrigate the plants.

Source: Archdaily



Everything is Black & White

4th May 2018 to 15th June 2018
Palette Art Gallery, 14 Golf Links,
New Delhi 110003
Tel: (011) 41743034

Through black and white paintings, the show proves that you don't need colour to be striking. This show is a radical new look at what happens when artists cast aside the colour spectrum and focus on the visual power of black, white, and everything in between. A Balasubramaniam, Akbar Padamsee, Amitava Das, Gurusiddappa, Jeram Patel, Parvathi Nayar and Rameshwar Broota are some of the participating artists.



Indus Streams & Delphi Hills

1st June 2018 to 10th June 2018
Jehangir Art Gallery, Gallery No 1,
Kala Ghoda, Mumbai 400001
Tel: 9930300664

Indus Streams & Delphi Hills is an experimental amalgamation of Indo-Greek Art & culture. The show gives viewers a glimpse into the Indo Greek ancient era and draws parallels between European and Indian art. Through her works artist Dr Rekha K Rana endeavours to reconstruct the history of the visual arts and cultural grandeur of these two great civilizations. The technique used for paintings in this show is mixed media on canvas.

Please note: For insertion in this column, we require details of upcoming events at least a month in advance. We request you to send in event schedules to: deepa.nair@nw18.com. Updates on events is at the discretion of the organizers. Information is valid at the time of going to print.

Art Walk

ARTIST JASLEENA SINGH REVIVES OBJECTS OF THE BYGONE ERA WITH HER BRUSH USING RETRO COLOURS.



ARTIST

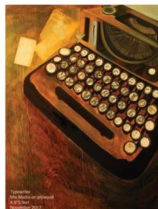
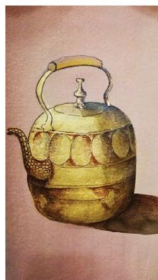
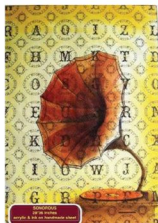
Jasleena Singh

ARTIST JASLEENA SINGH HAS

always had a love for old objects and heirlooms. She is a follower of decadence and treasures beautiful poetic forms in objects and what she deems as perfect workmanship which makes any subject worthy of appreciation. It was during her MFA course at the College of Art, New Delhi (2016) that the artist explored this theme thoroughly. She began working on a realistic representation of humble objects like an old family radio, a typewriter, a lantern, a cane chair and old mugs. Her maiden debut show Yesterday Once More, that took place recently at the Lalit Kala Akademi in New Delhi, was a three part compositional set of all her realist works — the lantern series, the tea series and the retro series. Each of the series was a study of still life and socio cultural lifestyles. The artist has played with the different moods and thoughts of these vintage objects by placing them in the present. The deft use of old texts and paper, calligraphy and different fonts on canvas as a background makes this bond between the past and present even stronger. The artist specializes in ink and acrylic painting, with support mediums like canvas and wood. Previously, Jasleena has participated in group exhibitions at Gallerie Nyva (2017), India Habitat Centre (2017) and Lalit Kala Akademi (2009).

ANCHORED BY: ALFIYA MEHMOODIADRIKALA, PHOTOGRAPHS: COURTESY THE ARTIST

jasleenasingh@gmail.com



Give your home the perfect design attitude



**better
interiors**
IDEAS AND DESIGN FOR BETTER LIVING

For the last ten years Better Interiors has brought out well-researched and unbiased content, aptly supported by spectacular visuals. The comprehensive product sourcing section on accessories, textiles, furniture and white goods offers lay-reader innumerable choices to create beautiful individualistic spaces. The magazine is also a treasure trove for those seeking information on the materials and technological advancements in the architectural and design industries. Project categories featured include: residential; restaurants and hotels; retail outlets and renovation projects. Better Interiors' online presence has won them more design patrons.

Subscribe Now!

www.betterinteriors.in

T: 022-6188584/585 | E: customercare_publishing@nw18.com



آموزشگاه انعکاس منبع جدیدترین اطلاعات، مقالات و دوره‌های آموزشی دگراسیون داخلی

Eco Beat

PRODUCT DESIGNER TESSA SILVA-DAWSON TURNS MILK INTO AN ECO-FRIENDLY BIOPLASTIC TO CREATE FUNCTIONAL PRODUCTS FOR HER PROJECT PROTEIN.



PRODUCT DESIGNER

Tessa Silva-Dawson

PRODUCT DESIGNER TESSA

Silva-Dawson, who studied product design from the Royal College of Art, London, has used cow's milk to create a natural alternative to plastic from non-renewable sources. Skimmed milk is routinely wasted in large quantities at raw dairy farms in the UK due to the separation process required to make butter and cream. For her project Protein, Tessa decided to save this material from being poured down the drain by turning the milk protein called casein into a bioplastic. The designer sourced waste milk from a dairy farm in Sussex, which throws away 3,000 litres of skimmed milk every week. Similar to cheese-making, the production process used heat to separate the curds from the liquid whey. The curds were then dried out in an industrial dehydrator and mixed with a natural plasticiser to turn them into pellets. Although referred to as plastic, casein also possesses qualities comparable to natural binders, and modelling materials such as clay allowing a lot of creative freedom in designing products. Tessa created a series of table tops, tableware and vases using compression moulding technique. She then added pigments and dyes to the plastic substitute to create marbled and dappled effects, then finished the surfaces with wax.



ANGHORBED BY: ALI EFTVA MEHVARA DORRANILU; PHOTOGRAPHS: COURTESY THE DESIGNER

www.tessasilva.com

آموزشگاه انعکاس منبع جدیدترین اطلاعات، مقالات و دوره‌های آموزشی دگوراسیون داخلی

Enekas.Academy

Enekas.Academy

HIGH Five!

FIVE WASHING MACHINES ARMED WITH WELL-DEVELOPED FUNCTIONS TO MAKE YOUR LIFE EASIER. TAKE YOUR PICK...



1

GODREJ APPLIANCES

The Allure series of fully automatic top load washing machines is equipped with a unique Rollercoaster Wash technology that combines the power of three distinct wash techniques in a rollercoaster like rapid movement. Features include Eco Mode, delayed start, cloth load indicator, memory back up and a soft shut wash lid. Available in six colours, in 6.5kg and 7kg capacities.

₹ 20,000 TO ₹ 25,000



2

LG INDIA

The LG Twin Wash allows washing two separate loads at the same time. With a capacity of 21kg it has a mini 3.5kg washer for intimates, delicates, white and baby clothes. A sliding detergent box at the top; TurboWash 2.0 and TurboSteam for faster wash cycles; and NFC for smart connectivity are some of the additional features.

₹ 2,47,990



3

MIELE INDIA

The W1 range offers some innovative features like Programme Manager that allows to choose from five wash options (intensive, Eco, Extra Gentle, Extra Quiet and AllergoWash) at the touch of a button; Softsteam Honeycomb drum with pre-ironing; Mixed Load Programme to wash up to 19 different garments at the same time and more.

₹ 89,990 TO ₹ 2,99,990

PANASONIC INDIA

The NA-F757 model is available in capacities of 6.5kg to 14kg while the 10kg and 14kg models come with a Stain Master plus inbuilt heater, which uses hot water to pre-soak clothes, before washing and hence delivers an even better cleaning performance. The Curry Mode helps remove stubborn stains such as curry, sauce and oil stains. Other features include Sazanami Drum and Pulsator, water-proof back panels, Aqua Spin Rinse technology, ActiveFoam Wash System, Gentle Hand Wash function for embroidered and delicate garments.

₹ 25,000



4

HAIER INDIA

The Gemini double drum washing machine has a holding capacity of up to 4kgs in the upper drum and 8kgs in the lower drum. Having two drums placed on top of each other, the machine helps in catering to different laundry needs of a family, with increased efficiency and reduced laundry time. It is equipped with 30 customizable programs (12 in upper drum + 18 in lower drum), anti-stain function, DD motor technology, A+++ energy rating and then some more. The machine also houses a huge tyre door with chroming decoration that lets the user to see through the washing process.

₹ 1,69,000



5

PICK of the Month

THE NEW SAMSUNG AIR CONDITIONERS ARE EQUIPPED WITH THE WORLD'S FIRST INNOVATIVE WIND-FREE COOLING TECHNOLOGY, WHICH COOLS EFFICIENTLY AND REDUCES ELECTRICITY CONSUMPTION BY 72 PER CENT.

COMFORT COOLING



ANCHORED BY: DEEPA NALLI, PHOTOGRAPHS: COURTESY: SAMSUNG INDIA

SAMSUNG RECENTLY LAUNCHED THE WORLD'S FIRST WIND-FREE COOLING TECHNOLOGY FOR their air conditioners in India. With this new technology integrated into the design of the appliance customers can now expect a cooler indoor climate, and optimal energy efficiency without the discomfort of direct cold airflow. The Wind Free Room air conditioners packs in the world's first 8 Pole series and Anti corrosion Durafin condenser, especially designed for India's harsh climatic conditions. The new line-up provides ambient condition by maintaining comfortable room temperature using Wind-Free Cooling technology to gently disperse cold air through 9,000 to 21,000 micro air holes. A two-step cooling system, which first lowers temperatures in Fast Cooling Mode and then automatically switches to Wind-Free Cooling Mode, creating a 'still air' environment with a very low air speed of just 0.15m/s and no temperature fluctuations — so there are no annoying drafts and you don't feel too cold, just really comfortable. This feature thereby consumes 72 per cent less energy than the Fast Cooling Mode air conditioners. Additionally, the new Good Sleep mode in the air conditioners creates the ideal climate for a good night's sleep — without an unpleasantly cold air flow. Thanks to the Wind-Free Cooling one is comfortable during the falling asleep stage, sound sleep stage and wake up stage. The Wind Free System air conditioner range is customizable with 1-Way Cassette, 4-Way Cassette and Mini 4-Way Cassette air conditioners as per the end user's requirement. The range is available at all leading retail outlets from a starting price of ₹ 50,950 to ₹ 74,260.

Samsung India, Toll free: 1800 40 7267864, Website: www.samsung.com

آموزشگاه انعکاس منبع جدیدترین اطلاعات، مقالات و دوره‌های آموزشی دکوراسیون داخلی

Enekas.Academy

Enekas.Academy

Give your home the perfect design attitude



Better Interiors offers well-researched and unbiased content, aptly supported by spectacular visuals. From industry news, to the latest project and product information from the architecture, interior design and home decor segments... you'll find it all here!



PERIOD	COVER PRICE	YOU PAY	YOU SAVE	DISCOUNT
1 YEAR	₹ 1,500	₹ 1,199	₹ 301	20%
2 YEARS	₹ 3,000	₹ 1,899	₹ 1,101	37%
3 YEARS	₹ 4,500	₹ 2,599	₹ 1,901	42%

**better
interiors**
IDEAS AND DESIGN FOR BETTER LIVING

SUBSCRIPTION ORDER FORM

Yes, I would like to subscribe to offer for year/s.

Name: Mr/Ms

Subscription No (for renewal): Organization:

Please send my copy to Residence Office (kindly tick on one)

Postal address:

City: State: Pin:

Tel: (O) (R) Mobile: E-mail:

I like to read **BETTER INTERIORS** because

Please find enclosed cheque/DD No drawn on (name of bank)

dated for ₹ favouring **Network18 Media & Investments Ltd.**

(Courier charges): 1 year ₹ 180 (Mumbai) & ₹ 300 (others) | 2 years ₹ 360 (Mumbai) & ₹ 600 (others) | 3 years ₹ 540 (Mumbai) & ₹ 900 (others)

Or charge my VISA MASTERCARD (kindly tick on one) Card No:

Card expiry date: Date: Subscriber's signature:

Subscription Department: Network 18 Media & Investments Ltd, Reliance (PARC) Premises, Swastik Mills Compound Opp. Surana Sethia Hospital
V N Purav Marg, Chembur, Mumbai – 400071 – Maharashtra; Tel: (022) 61188584/585; Email: customercare.publishing@nw18.com

Terms & Conditions: Your subscription will start from the next available issue. No cancellations will be entertained after commencement of the subscription. Network18 Media & Investments Ltd reserves the right to extend, cancel or discontinue the offer. Please refer to the website for more details.

آموزشگاه انعکاس منبع جدیدترین اطلاعات، مقالات و دوره‌های آموزشی دکوراسیون داخلی

Bespoke lighting from a master designer, automobiles turned into furniture and more...



THE DECOR KART

Inspired by the effortlessly beautiful European and oriental decor styles The Decor Kart's new collection of exquisite home decor accents will definitely rejuvenate your home space. It includes hand-painted Porcelain Temple Jars in the decorative jars and urns category. These jars showcase Chinoiserie art, a western decorative style of art, furniture, and architecture, prevalent in the 18th century which was inspired by oriental motifs and techniques. Also, a range of Celadon tableware products including platters, bowls, soup bowls, cake stands are available. The tableware products are made of ceramic and exhibit a Celadon shade. An extensive range of Ceramic Garden Stools hand-painted in a variety of colours ranging from subtle pastels to gloss gold is also on offer.



CARNITURE

Carniture alters old automobiles into unique pieces of furniture and home decor accessories and goes by the mantra — recycle, reduce and reuse. These emotive works of art are first conceptualized a basic design after which elements are added for comfort and functionality while maintaining the authenticity and character of the automobile. Once the furniture is created, it is tested for strength, quality, durability, and capacity and then painted in the desired colour. Desks made from car trunk lids are the most common offering, besides suspension pieces morphed into lamps, truck springs as bar stools, truck beds shaped into bookshelves... the possibilities are endless.



WISMA ATRIA INTERIORS

Wisma Atria brings the Italian Splendid Furniture Collection by brand Emmebi to its store. The collection consists of meticulously designed and carved sideboards, dining table, side tables and chairs. Each masterpiece is made in Italy and showcases a blend of style and exclusive designs. The brand works with different designers hence each piece has a thought process behind its design and inspiration taken from places, nature and other concepts. The table collection is available in round, rectangular and straight shapes with finishes like matte, lacquer and bronze. The chair collection includes refined swivel armchair with a pouffee covered in velvet in colors of beige, black and white. The sideboard collection comes in various designs inspired from cube shape. They have a matte lacquered metal structure and are available in a glossy finish.



GULMOHAR LANE

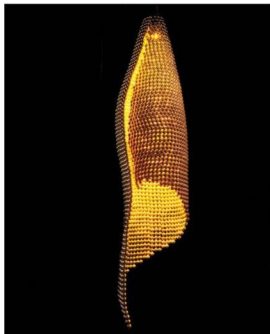
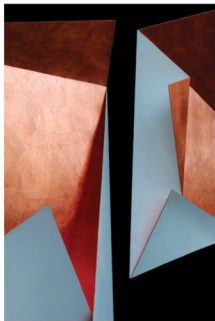
Latest from the brand is The Norway Coffee Table island which is composed of three individual tables which when combined together becomes a centre table. The slender metal frames in an antique brass finish along with tabletops composed of fine hardwood in a mix of chic wooden finishes occupy minimum visual space while making a striking statement. You can choose between a single colour or multicolour wooden finish options. Besides, the coffee table design lets you customize its appearance with minimal effort with the help of a instruction sheet provided in the toolkit. The coffee table is available from ₹ 35,900 onward.



INTIKI

Intiki — meaning home, in the Telugu dialect, is founded by Anchal Khosla in May 2018. The home decor brand has come up with its first hand made collection B-9 inspired by cherished childhood memories and elements. The collection comprises of tabletop products and is an ode to the designer's childhood home and all the memories associated with it. The terrazzo coasters (featured here) are reminiscent of the cool summer flooring in old-style constructions, the glistening *paraat* used to knead flour inspires the brass tapas plates, and childhood puzzles take on an updated form through the cheeseboards.





VIBHOR SOGANI

Ace lighting designer Vibhor Sogani recently unveiled four bespoke lighting collections — Casa, Drape, Fold and Palm. Inspired by the form of a weaver bird's nest, Casa expresses the strange, symmetrical, immediate, and almost substantial flexibility of the relationship between a man and an edifice. The curvaceous form uses stainless steel balls to gently wrap the form of the nest. The light source within is covered with frosted glass that imitates the shape of an egg and provides a uniform glow. Drape is an enticing light installation that resembles a piece of fabric draped around a woman's body. Made from stainless steel, the light source is situated at the top and is concealed to create a sense of mystery that adds to its sensuality. The Fold Series are available in wall and suspension variants and derives inspiration from origami. Crafted out of singular sheets of stainless steel, folded into diverse forms — each individual fold is the result of deliberate and meticulous thought. Lastly, sunny days, warm breeze and sunlight filtering through the fingered palm leaves are the inspiration behind the Palm. It consists of prism like surfaces that radiate light and gently draw a person into its folds and faceted formation. The bigger surface represents the leaf and the smaller reflects the cusp. The light situated in the cusp illuminates the leaf, which then reflects it at different angles with different intensities. The gold leaf plating provides it a hue that adds to the dynamic value.



SCRIPT

This stunning Ritz sofa exudes graceful lines, smooth-flowing curves and exceptional detailing. Fashioned out of the finest pure leather upholstery along with chrome-plated legs adding some bling, this sofa is ergonomically designed with a high back for neck and head support and that perfect lumbar support. The Ritz corner boasts seats with exceptional depth. Also, its light-weight materials give you the ability to move it around with ease. While, the raised backrests that wrap around two adjacent sides of the sofa will let you sit the way you want. It also provides an extra seating space whenever required.



BENT CHAIR

The Resin collection from Bent Chair offers around 30 to 40 products including quirky mirrors, animal figurines, planters, lights, and sculptures. The manufacturing comprises of a four step production process using the poly-resin material. First, the mould is created in the desired form and then cast in the form of the sculpture. The final touch is given through a gold spray paint technology. The collection thus includes different product lines categorized into six series — Timeless Tales, Green and Glam, Mad Mirrors, Famous Five, Calm and Wild and Bent Chair Favourites. The Famous Five series (featured here) is inspired from the renowned sculptors of the world. The series depicts striking resin figurines in bright solid tints with an impeccable detailing making it an exquisite keepsake.



CUROCARTE

The luxury lifestyle e-commerce platform CuroCarte has introduced their Soulful Creations collection — a set of eco-friendly products that do not harm the environment in their manufacture, use, or disposal. The collection is divided in six categories which includes Soul Food, a stylish collection of serveware offering a wide range of ethically sourced products to choose from. Soulmate, the collection of twins offering beautiful sets of wine glasses, mugs, pen stands, platters, bowls and more. Soulful Expression includes artistic creations from eclectic vases to rustic tea sets. Soulful Wonder is inspired by unseen wonders that can be uncovered by a soul who is eager to look for them and believes in its existence. The collection offers a unique product range like curd bowl, light globe, vases, swirl bowl. Soulful Beauty is all about magic... It is omnipresent, sometimes you come across it as a form of new ideas and art, on the other hand it is intertwined with the process of creation itself. The collection offers exuberant range of artworks and statement pieces like Hot Toddy Clay Table Decor, Charcoal Doughnut Jug, Soul Art is the range of Au Naturelle, has an origin story, are made uniquely by hand and have the potential to be the change that we want to see in the world! The range include Elephant candle stand, Rustic Soup set, Banana Leaf Platter set, Mud bowl, Concrete plate and more.

Artisanal Marvels

Handcrafted creations hold a personal connect, which, in this world of mass produced goods, is to be deeply treasured. Each tells a story of inspiration and painstaking hard work, and comes with its own unique touch that can never be replicated. We present you with a collection of handmade furniture, furnishings, home decor accessories that celebrate the art of the handmade.

ANCHORED BY: DEEPA NAIR AND RASHMI KARANJEKAR; PHOTOGRAPHS: COURTESY THE BRANDS



Timothy Oulton

The Saddle Chair has a sleek, dynamic fiberglass frame and is upholstered in a range of leathers with cowhide accents on the front and back. It is paired with the Crossglass Pendant Hanging Light and Vestige Industrial Mirror which is handcrafted from offcuts of genuine reclaimed English timber.

Price on request



CuroCarte

The Multi-hued Floor Lamp uses fabric, paint and metal in its creation. With carefully stitched leather as the base and precise detailing completing its appearance, it showcases an interesting mix of culture, tradition, glamour, and style.

₹ 2,380



Baaya Design

The beautiful and meticulously crafted Taj Mahal marble inlay work inspired copper enamel wall plates follow a comprehensive process using glass powder colours and copper wire.

Price on request



Outlin'd

Meharaab Tea Tray comes with a set of six built-in coasters that are easily detachable.

The tray can be used as a whole or as individual saucers.

₹ 3,650



Beyond Designs

This wooden sculpture on metal plates aims to infuse the old-world heritage to the contemporary homes of today.

Price on request



Wicker World

Designed by Amit Sawhney, the Bubble Chair is made from irregular circles that are combined, hand-forged in mild steel and covered in beautiful natural wicker.

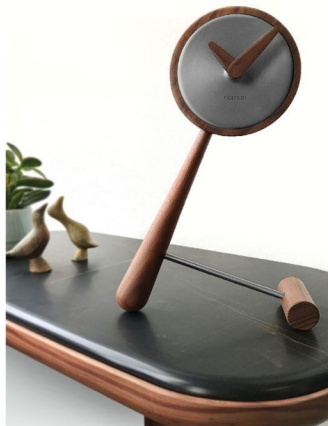
₹ 31,500



Sans Souci

Symphony features machine-cut tubes adorned with a brass nano coating finish. The diamond pattern is imbued with a delicate golden gradient that crowns the entire chandelier.

Price on request



ST Unicom

The Mini Puntero clock from Nomon is expertly handmade in Barcelona and features a striking slanted design in walnut wood. This desk clock is finished with a stylish graphite coloured face and has walnut wood hands.

₹ 24,500



Cottons & Satins

The pretty Bumble Bee Bedding Collection has intricate design details inspired by nature in a palette of blues, fresh greens, neutral greys and soothing browns. The range features a variety of bedspreads, shams and cushions made from cotton and linen with plush velvet finishes and hand-embroidery.

₹ 13,900 onward



Baro

The Saab audio-video unit is crafted from reclaimed teak in natural polish, and champions minimalist design with angular lines and chamfered edges, which also keeps the equipment ventilated. Three drawers of varying sizes offer ample storage. ₹ 70,000 onward



Timothy Oulton

The Spur Small Side Table is made from driftwood (collected from beaches around the world) and is juxtaposed with acrylic. Also seen is the Butterfly Mk2 Sideboard with doors handcrafted from a single sheet of Italian marble in a honeycomb structure.

Price on request



ST Unicorn

Nomon Home's Peonza would bring back childhood memories as it is a tribute to the spinning top. The object also becomes a floor mirror. The body of the spinning mirror is made of natural solid walnut and solid natural ash with details in polished brass handcrafted and polished by hand. The mirror is finished in bronze.

Price on request



Fanusta

An ensemble of handmade antique silver glass jar, candle holders and lanterns would make for a glamorous addition to any table.

₹ 1,400 onward



Wisma Atria Interiors

Add a twist to the boring corners of your adobe with these tables from Fratelli Boffi. Designed with premium quality of solid wood and glass top, the table's stand depicts the perfect swirl.

₹ 3, 72, 000 (each)

Claymen

The Daydreamer sculpture, made from stoneware clay, is an artistic reminder that it pays to think big. Place it in your study for some Monday motivation.

₹ 10,030 (each)



Shades of India

The new furnishing collection showcases a playful combination of colours and textures. The silk and cotton bedcover in lapis blue is contrasted with a quilt in velvet featuring a floral print. The cushions are in charcoal and embroidered in zari and silk cutwork. Price on request



The White Teak Company

Add a quirky twist to your tea parties or get together with these Unlimited Refills Wooden Decor pieces which come in a set of three.

₹ 5,950

Iota

Crafted with natural Havana rope with soft cushioned seating, this Popcorn chair is a piece of functional art. Its design rendition of a popped kernel of corn makes a quirky statement.

₹ 1,14,000



Studio Wood

This gorgeous handmade Gingham bench belongs to the Series of Figments collection. It is crafted from mild steel in a Duco finish with a beautiful cane weave and Calcecruda top. Price on request



Loom Crafts

Relax on this long chair as you watch the sun set from your patio. It comes with a side table and is made from aluminium and covered with woven synthetic fibre. ₹ 37,100 onward

آموزشگاه انعکاس منبع جدیدترین اطلاعات، مقالات و دوره‌های آموزشی دکوراسیون داخلی

Ochre at Home

Geometry-inspired Twin Peg tables are crafted from solid teak wood with open pore matte finish. While one of the tables top is clad in burl veneer, the other dons a malachite. Price on request



Beyond Designs

The Antique Stone Horse Head is from Beyond Designs' new collection of statement decor pieces called Artifacts. Mount it on your living or dining room wall for an instant bit of drama.

Price on request



Loom Crafts

This sofa chair is made with an aluminium frame and covered in woven synthetic fibre. It makes for a sturdy, durable addition to your outdoor furniture.

₹ 30,000 onward



I'M Centre for Applied Arts

A slab of reclaimed wood has been paired with high shine stainless steel to give this centre table a warm yet contemporary look and feel.

Price on request



The Great Eastern Home

This bed, made from solid Burma teak, will add a sense of gravitas to your bedroom with its stately frame and intricate design detailing.

Price on request



CuroCarte

The highlight of this desk lamp are the millions of tiny animal and floral details carved out in marble. Price on request



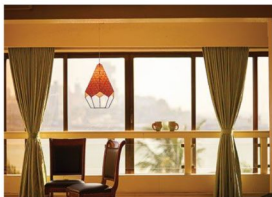
The White Teak Company

This pair of beautifully carved statues in wood conveys the strength and grace that women possess. The sculpture will fill your living space with an aura of quiet elegance. ₹ 5,950



Baro

The freestanding Deco Bar will help you channel the pomp and glamour of the roaring Twenties. It is made from reclaimed teak with a brass top and frame and is equipped with a large storage cavity. ₹ 1,25,000 onward (brass top); ₹ 1,00,000 onward (glass top)



CuroCarte

Gorgeous peacock feathers virtually flutter to life in this vividly colourful Peacock Cone Ceiling Lamp. Red and green come together seamlessly to create imagery that is evocative of the villages and forests of India. ₹ 1,740



Sans Souci

The spectacular Flying Leaves Lights is crafted from hand-blown and hand-shaped crystal with a copper nano-coating finish that lends it added radiance. Price on request



ST Unicorn

Depicting a tribe in motion, The Journey wall art from Artisan House crafted in brass is a masterpiece that would prove a conversation starter. Price on request



Vilaasita

This Ollie Arc Bench is a glamorous piece of furniture for your living space. It features a sturdy iron base in gold powder coating along with plush velvet fabric.

₹ 21,900



Pepperfry

Taksh Handcrafted Solid Wood Two Seater Sofa from brand Mudramark is made from sheesham wood and dons a striking shade of provincial teak.

₹ 23,749



Tresorie

These globes are made from antique brass and nickel. Place them in your study or living area to remind you of adventures you've embarked upon and those yet to come.

₹ 1,500 (each)



Studio Wood

One half of the Mayfair Console is crafted from mild steel, walnut veneer and flexi-ply; and the other half, and definitely the highlight of the piece, is a beautiful old-world cane weave.

Price on request



Dash Square

This series of Dining Upholstered Side Chairs are from the Ledelle-Brown Collection. Made from ash swirl and birch veneer with Asian hardwoods and a dark cherry stain, they will be a chic addition to your dining room no matter the style of decor.

Price on request



The Great Eastern Home

The Stained Glass Screen comes with a wooden frame and is a pretty way to create a visual break within a space in your home.

Price on request



Outin'd

The design of the Aiyana Kaari wine glass holder celebrates the Mughal art of mirror work. Available in cork with a mirror inlay, the compact wine stand features six smooth grooves to prop up your wine glasses.

₹ 8,850



Claymen

The Conscience of a Subconscious Mind is a two-piece sculpture made from stoneware clay which poses questions about interrelationships at his innermost level. These small sculptures are inspired from the observation of the common man and his dilemmas.

₹ 17,700



Timothy Oulton

The Hestia Dining Table is a luxurious, limited edition piece named after the Greek goddess Hestia, which translates as hearth or fireplace. The table top has been polished for a smooth, flush surface with a beautiful shine and inlaid in a brushed brass frame for visual contrast.

Price on request



CuroCarte

The gorgeous Palatial Arch Table Top crafted from fine marble would be a statement piece in your living space. A white shine adds natural lustre to the marble's smooth texture, and floral motifs inspired from the Mughal era make the table top one of a kind. Studded precious stones like turquoise and lapis lazuli compliment the brilliant marble inlay art, attesting to the royal look of this table top. ₹ 13,040



The White Teak Company

Titled Horse in the Woods, this sculpture is elegant yet rough around the edges, much like the spirit of a wild horse. Place it in your foyer or living room. ₹ 5,950



ST Unicorn

This stunning beauty is called the Wildlife Marsh Tits by creators Malares and is cast in crystal with engraved and sandblasted motif. The sculpture is handmade in Sweden and signed at the bottom by artist Mats Jonasson. ₹ 14,150



Iqrup + Ritz

The Dunbar sofa and armchair borrow their sleek frame from the 1960s design style. They are available in natural teak polish with over 42 fabric options to choose from. ₹ 73,950



Fanusta

These colourful wooden trays showcase the dying art of Kishangarh Shaili — a distinctive fine painting style created by artist Nihal Chand which surfaced in the mid-18th century, under the patronage of Maharaja Sawant Singh. Price on request





Shades of India

This furnishing collection features a rich colour palette of emerald, burgundy and mustard yellow. The materials used include linen, cotton, cotton velvet and silk cotton with embellishments of kantha work, embroidery, botanical prints, argyle patterns and so on...
Price on request



Ochre at Home

The subtle elegance of origami is echoed in this accent table crafted in teak wood and hammered brass.
Price on request



Wisma Atria Interiors

The Pattern Room Divider not only serves the practical purpose of bifurcating a room but is equally a work of art. It is crafted from wood, steel rods and glass shelves.
₹ 2,26,000



Cane Boutique

With its intricate craftsmanship, this solid wood door is sure to turn heads. It is reminiscent of one that you would see in a grand ancestral home.
Price on request



Claymen

Misplaced Hope is a two-piece sculpture, crafted from stoneware clay, which embodies the fragility of hope.
₹ 17,700



Claymen

The Frail Lamp features a geometric design and seems almost other worldly. It is made from clay.
₹ 6,844



Timothy Oulton

This almost futuristic set-up features the Colosseum Console, crafted from marble along with brass detailing; the Shabby Sectional Faded and Degraded Sofa upholstered in velvets; the Inception Rock Crystal Coffee Table handcrafted in matte black metal with bronzed edging; and the Flare Side Table made from wands of selenite crystal.
Price on request



The Great Eastern Home

The works of Spanish architect Antoni Gaudi find expression in this limited edition wooden bench. Place it by a window in the bedroom to create a mini reading nook.
Price on request



Iota

The design of the Arachne Chair is derived from the concept of the circle of life. It is made from Havana rope and rattan.
₹ 89,100



Baro

Showcasing influences from the radiogram, the Short Wave storage unit is fashioned from reclaimed teak with Duco paint and natural polish. The fabric-covered door mimics a speaker, the metal grill functions as a door handle and the clever construction allows for a thin rounded edge.
₹ 60,000 onward



Vilaasita

Contemporary yet laidback in design, the Aztec Kilim Rocking Chair comprises a neat metal frame and hand-woven kilim fabric.
₹ 28,900



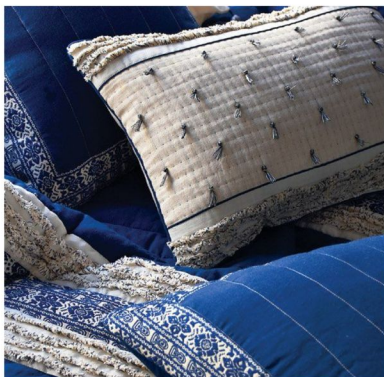
Beyond Designs

These Antique Stone Sculptures are statement pieces which will add a dramatic effect to your home decor.
Price on request



Cottons & Satins

The striking Ripe Grape Bedding Collection offers a variety of bedspreads, shams and cushions made of cotton, linen with plush velvet finishes and hand-embroidered details.
₹ 15,400



Cottons & Satins

The Mediterranean Bedding Collection includes a mix of navy blue and off white shades with intricate nature-themed detailing and patterns. The range comprises a variety of bedspreads, shams and cushions made of cotton and linen with velvet finishes and hand embroidery.
₹ 18,400



Dash Square

This smart storage unit comes in with straight lined design and is equipped with drawers of multiple sizes.
Price on request



Timothy Oulton

The Shabby Leather Sectional Sofa is beautifully cushioned with layers of soft ribs stitched into luxurious hand-finished leather. The deep, generous seat and reclined back offers absolute comfort. Pair it with the Shabby Coffee Table, one half of which is luxuriously cushioned with leather with the other finished in reclaimed English timber. Price on request



Sans Souci

Lure is a dreamy mobile of tiny amber and crystal glass plates with a brass nano-coating in a pattern that makes them appear to glitter. Price on request



Loom Crafts

This dining table and set of chairs are made from aluminium and covered with synthetic fibre and are apt for the gardens or swimming pools. ₹ 41,300 onward (dining table); ₹ 10,200 onward (chair)



Iqrup + Ritz

This bohemian Kutch chair is available in thirty five fabrics but looks best in hand-woven shawls specially made by an artisan family in Gujarat. It is finished in a warm dark elm polish. ₹ 65,910



CuroCarte

With intricate tribal patterns based on a bead-and-seed motif encircling an ornate centre adorning its saddle, this Dokra art Robust Horse Decorative in bell metal will go places. ₹ 11,500



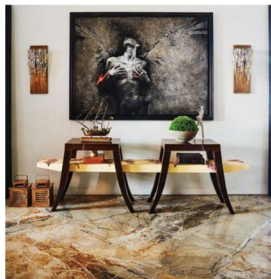
Bazaar



Baro

The vintage telephone seat is made from reclaimed teak. Its features include: subtly angled drawer fronts, tapering edges, fluted steel legs, a seat made from high-density foam and underneath storage.

₹ 70,000 onward



Ochre at Home

The Twin Console features oak veneer in either matte or high gloss. They are linked by a horizontal, white-lacquer porcelain-finish member bedecked with handpainted spring flowers. Use it either as a console or a beautiful divider.

Price on request



Cane Boutique

Bring these uniquely shaped chairs that allows you to incorporate the timelessness of wood with trendy, avant garde design into your home.

Price on request



Loom Crafts

Vibrant and contemporary, this multi-coloured sofa chair is made from aluminium and covered in synthetic fibre.

₹ 16,800 onward



Studio Wood

The Ludwig Chair is made from walnut wood with matte melamine finish. Its back is handcrafted with a cane weave, and a seat upholstered in suede.

Price on request

Habitat



Brimming with Brio

Sophisticated and vivacious, a 8,400-square-foot Gurugram penthouse designed by architect Akshat Bhatt-led Architecture Discipline embodies eclectic luxury, orchestrated as a series of stylish composites.

TEXT: RUPALI SEBASTIAN, PHOTOGRAPHS: JEETIN SHARMA, COURTESY ARCHITECTURE DISCIPLINE

آموزشگاه انعکاس منبع جدیدترین اطلاعات، مقالات و دوره‌های آموزشی دکوراسیون داخلی

 Enekas.Academy

 Enekas.Academy





ARCHITECT

Akshat Bhatt

“One of the things we keep in mind is that it's a home, and not just a showcase for something,” says architect Akshat Bhatt in a 2015 internet interview about one of his residential projects. “A new space is an opportunity to live differently. When you allow people unusual experiences, and if they are broadly pleasant, you will find that they will engage with it.” And different, experiential and engaging are just the adjectives you'd use for the penthouse project he's recently completed in a premium luxury condominium in Gurugram.

“The site was a typical developer apartment,” informs the principal at New Delhi-based Architecture Discipline, “it lacked character and the design, specification and the finish quality was not in keeping with the price of the place.” While, at 8,400 square feet, the footprint provided

LEFT A perforated metal and glass door gives a sense of space yet prevents a direct view into the house. In conjunction with natural light, it acts as a light screen which changes character through the day.

CENTRE The bookshelf, a memory wall of sorts, exaggerates the scale of the entrance lobby and the hallway.

RIGHT The flight of stairs that leads to the private zone on the next level.

آموزشگاه انعکاس منبع جدیدترین اطلاعات ، مقالات و دوره‌های آموزشی دکوراسیون داخلی



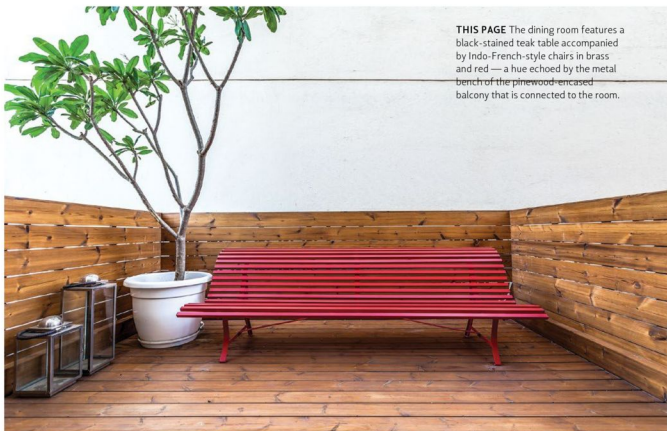


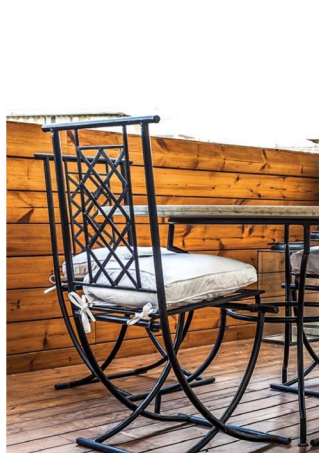
آموزشگاه انعکاس منبع جدیدترین اطلاعات ، مقالات و دوره‌های آموزشی دکوراسیون داخلی





THIS PAGE The dining room features a black-stained teak table accompanied by Indo-French-style chairs in brass and red — a hue echoed by the metal bench of the pinewood-encased balcony that is connected to the room.







CLOCKWISE, FROM TOP LEFT

The study near the entrance lobby facilitates daylight penetration into the penthouse.

A striking chequered wall creates a high-on-energy cooking space.

The L-shaped terrace that nestles within the C formed by the study, hallway and the living room.

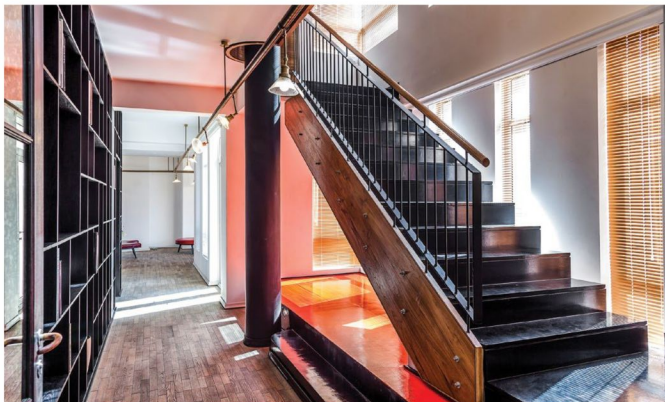
Wrought-iron furniture allows the occupants to enjoy al fresco meals on fine days.

Nearby, lies a MS water bowl whose corroded appearance is in consonance with the natural aesthetic of the other elements here.





CONCEPT: To create a characterful residential space for a young family that lend itself to growing children (intellectually) and for a young well-travelled couple to entertain in.





CLOCKWISE, FROM ABOVE

LEFT The guest bedrooms: comfort and simplicity creates a welcoming space.

The landing on the first level. The bookshelf makes an appearance here too, and directs the eye to a small alcove with a piano and the door of the master bedroom.

The black-painted, teak-accented staircase. The portion below the stairs is coloured a vivid red, and the staircase itself is painted with alternating coats of black and red. Over time, the uppermost black layer will wear down to expose the red undercoat, and the staircase will get a striking distressed finish. Copious amounts of sunlight from the terrace that abuts this hallway ensures that the stairwell is adequately lit through the day. At night, it's the customized track lights — featuring delicate glass shades on hammered brass pipes — that come into play.

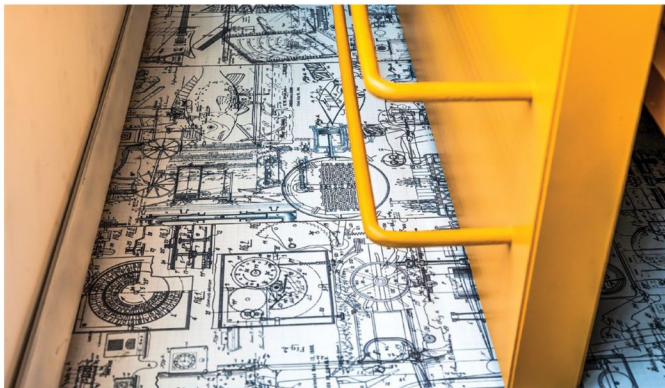
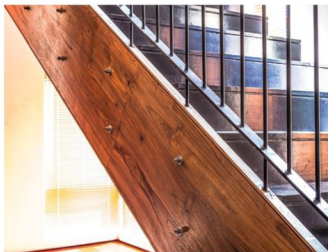
MATERIALS

Main door Perforated metal sheet and glass
 Floor Parquet Bookshelf Wood
 Staircase Epoxy paint and timber Dining table
 Black-stained teak Outdoor furniture
 Wrought iron with marble-topped table
 Deck cladding Seasoned pinewood

plenty of playing field, poor planning and circulation made it difficult to use in a flow. "The place lent itself to rooms and not a sequence of spaces," says the architect. However, it had one redeeming quality — natural light, and plenty of it. And that is what they decided to work with.

The brief was simple: to transform the space into a home for a young family that had lived in London for many years. The house was to have character and lend itself to growing children (intellectually) and for a young well travelled couple to entertain in. The design team decided to approach this project like a series of practical installations arranged as an experiential sequence. "An unstructured/ad hoc aesthetic is always a little difficult to explain as you have to eyeball a lot of things; it's usually about the logic of detail, scale and proportion," reveals the architect when asked





THIS SPREAD The house is replete with textural play, both tactile and visual. Warm wood, perforated metal, patterned flooring, floral wallpapers and upholstered headboards and upholstered headboards, vibrant stripes... all come together to create vignettes that are striking and removed from the ordinary.





THIS PAGE The stairs that lead to the ultimate level — the terrace — and a cosy den which features grey and black sofas against an eye-catching wall of sea green and dull gold.

OPPOSITE PAGE The painted timber wall injects a sense of joie de vivre into the daughter's room. The glass panel in the study area serves both, as a drawing and writing pad.





آموزشگاه انعکاس منبع جدیدترین اطلاعات ، مقالات و دوره‌های آموزشی دگوراسیون داخلی





how easy or difficult it was to convince the client to see things from his perspective. "This requires some explanation especially for the untrained eye. Once you're on board though, it's a fun ride. The convincing wasn't difficult."

Limited envelope changes were the only real challenge in the project as it involved restraint. "There's always something you can do better when you're working for individual programmes as opposed to mass building," says Akshat. The alterations involved a few non-structural civil changes to enhance spatial flow of the unkempt space. Programatically speaking, the public zone (guest room, study, living room, dining area and kitchen) takes up the first level; the bedrooms (one master plus two children's) with their en suites constitute the second level, with the terrace forming the last storey.

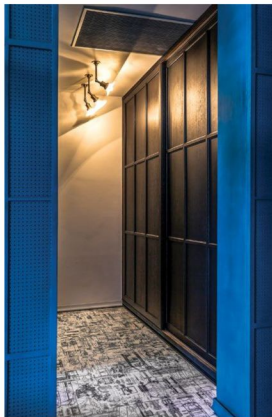
The house features a stunning neo-baroque interior with a decor that can be best described as festive, majestic and flamboyant. An in-depth knowledge of materials and surfaces provided the architect with the requisite tools to realize his unique vision of space planning. Wrapped up with frosted film, the glass-and-perforated metal entrance door provides some privacy to the family whilst



giving a hint of the house to the visitors even before they enter. The glow of natural light on the door keeps varying throughout the day which gives it a transposable character. Right in the entrance lobby is a double-height bookshelf which acts as a memory shelf for the owner's collectibles. The entrance lobby is perspective-driven wherein the bookshelf and the flooring pattern heighten the sense of depth and draw the eye of the visitor to the end of the hallway. Brass lamps are placed such that they further accentuate the linear movement. Next to the double-height bookshelf is a study that maximizes daylight penetration and uses that to a dramatic effect to enhance the overall scale and experience of the apartment.

The colour palette of the living room pivots between the shades of natural grey, metallic grey, ivory and indigo that gives the visitors a peek into the owner's psyche — part trendy, full revolutionary. The living room is organically connected to the dining area. Elements like an Indo-saracenic-style sofa, origami bowls for displaying items and Indo-French-style brass-back dining chairs help maintain a modern-classic typology. In addition to customized track lighting featuring delicate glass-domed lights fitted along pounded brass

THIS SPREAD The son's room, comprising sleeping, studying and dressing zones, showcases pleasing colour-blocking, with a cheery yellow bunk bed set against a backdrop of bright blue. The flooring here is science-inspired.





THIS SPREAD The master suite. A floral fabric-upholstered headboard imbues the space with elegant whimsy. The purple spills over to the sofa and the dressing stool. Like the other bathrooms, the master bathroom, too, sees the use of cudappah on the floor and dado. Gold-plated fittings and wallpapers by Sabyasachi up the glamour quotient.

pipes, hand-blown glass and cast glass light fixtures finished in brass illuminate the dining and living room. The bar is wedged between these two spaces, instilling a feeling of openness and continuum throughout the first floor.

Both, the living and dining areas overlook decks: the dining room spills into a small balcony with a luscious red bench that echoes the hue of the red and gold dining chairs; while the living room is visually connected to a deck delineated with seasoned pinewood on the parapet walls and floor. This balcony, which can be accessed from the hallway, ventilates the central portion of the house and also acts as a light well. The corroded MS bowl in the terrace was purposely exposed to express its natural aesthetic. Next to it lies a wrought-iron dining table, a sibling (in form) of the teak dining table inside.

From the hallway, a staircase poised above a vibrant red-painted floor, takes you to the next level. Furnished with a teak-finish balustrade, this connecting element is painted black with an undercoat of red, so that over time and with continued use, it will assume a pleasing distressed appearance. The bookshelf element continues on the next level, too, and directs the focus on the master bedroom door



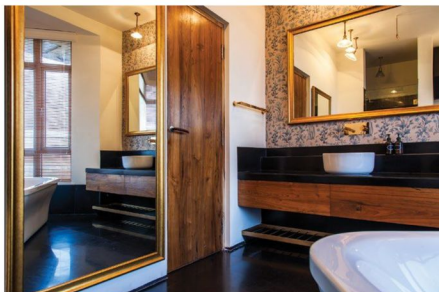


made out of antique teak. Inside the room, a floor-to-ceiling upholstered headboard, featuring a dark coloured ground with pink and green flowers and leaves, adds a generous dose of whimsy. Following the footsteps of the bookshelf and maintaining the connection between the public and private, the wardrobe separates the living and the bathroom of the master bedroom.



With a Goldilocks bed, an animated dressing table and a multi-coloured painted-timber wall, the daughter's bedroom blossoms straight out of a fairy-tale. A glass panel in the study area was specially put in to receive her creative outpourings, as well as cater to studies, leaving behind the conventional way of studying on a table — thus making the space more playful and open to expressions. Bleached grey flooring expressed with nude lavender shades tempers the vibrancy of multi-hued wall. On the other, the flooring in the son's room is science-inspired and works well with a painted teak bunk bed and the blue acoustic wall behind it.

The bathrooms throughout the house feature cuddapah stone on the floor and dados, with gold-plated fixtures and Sabyasachi wallpapers to add warmth and personality. Dominating the terrace and the pool is the den on the third floor, presenting an arresting picture with its black and grey sofas sitting against a wall of sea green and dull gold finish. The den was consciously placed in isolation, at a higher level than the other rooms, so that the family could spend moments of togetherness undisturbed by the routine of daily activities.



This stylish residence with its aesthetic vignettes is an oasis of calm in a bustling urban setting. Following an "eclectic luxury" approach that is both progressive and modern, the design juxtaposes well-designed modern architecture with a melange of furniture and art to spectacular effect. 📌

FACT FILE: Project PIB IVY
Location Gurugram Area 8,400 sq ft
Principal architect Akshat Bhatt
Design team Kashika Nanda
Lighting contractor Blit

Habitat

The modern, angular grey concrete facade of the bungalow stands out amongst its neighbour



STRIKINGLY SUBTLE

P&D Associates take an unconventional route to make a bungalow in Bharuch stand out with the play of delicate colours, textures and a luxurious yet subtle material palette that speaks of quiet elegance.

TEXT: ALIFIYA MEHAMDABADWALA, PHOTOGRAPHS: © 2018 PHOTOGRAPHIX | SEBASTIAN + IRA, COURTESY P&D ASSOCIATES

آموزشگاه انعکاس منبع جدیدترین اطلاعات، مقالات و دوره‌های آموزشی دکوراسیون داخلی

 Enekas.Academy

 Enekas.Academy





“Beauty lies in the eyes of the beholder” Most of us have either heard or applied this popular proverb at some point in time. Like anything else in the world, when it comes to architecture and design too, what may be attractive

to one may not be for another. Yet, despite the diversity of our desires and preferences, there are some structures that are usually liked by all. We all tend to be in awe of spaces that are surrounded by nature, with beautiful landscaping all around. The colour of the leaves, the ripples of the sea or the expanse of the sky... these can inspire anyone. In such cases therefore, the environs itself make a beautiful canvas for an architect to bring an abode to life. In contrast, we tend to cringe at the sight of homes located in congested areas or a suburban sprawl. Therefore, when an architect is roped in to build a home in a residential area that is cluttered with unimaginative, match box-like row houses, the challenge to create a space that ‘stands out’ is doubly difficult.

We’ve someone who passed the litmus test — architects Pratik Siddhpura and Devang Patel of Bharuch-based P&D

ABOVE LEFT The tilted roof is supported on a triple height column with an underside covered in Mangalore tiles. Not only does it add a decorative element to the facade but it also provides shade to the balcony attached to the master bedroom on the first floor.

ABOVE RIGHT The teak front door is adorned with brass strips used to create a chequered pattern. Here it stands slightly ajar, offering a glimpse of the foyer and the living room beyond.



ARCHITECTS

Devang Patel and Pratik Siddhpura





CONCEPT: To design a simple and elegant home with airy and open spaces minus any physical barriers.

CLOCKWISE, FROM TOP LEFT

The wall panelling in the foyer is made of new wood with embossed dandelions in Duco.

The dining area is marked by a teak and onyx dining table with matching velvet-upholstered chairs. The square opening in the wall allows for a view of the foyer, creating spatial fluidity.

A water body has been created in one corner of the lawn. The water flowing from the marble panel into the pond makes for a soothing and tranquil experience.

The salmon pink walls and matching velvet sofa in the living room adds freshness and vibrancy to the space. The pale blue chairs coupled with the floral-printed rug makes for a pleasing sight.





CLOCKWISE, FROM ABOVE

Pristine white marble has been used on the walls of the puja area with the central panel highlighted by peacock feathers in gold-leaf and mother-of-pearl.

The family area on the first floor is surrounded by the three bedrooms. Just like the living room, the furniture here has been made from teak and velvet, while the teak mural with brass inlay adds complexity to the design.

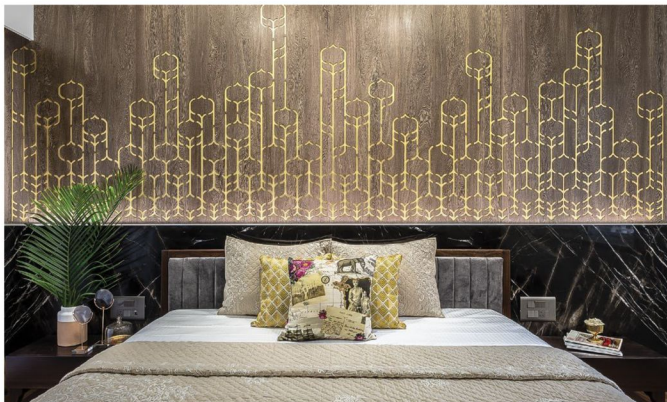
A view of the parents' bedroom on the ground floor. An intricate brass pattern has been inlaid on the Italian marble wall behind the bed.

Associates — who were commissioned to design a two-storeyed bungalow in a residential society where each house bore a similar mundane structure. The challenge was to give the 2,700-square-foot home its own identity and incorporate the client's request for a simple, elegant design with open spaces and minimal physical and visual barriers. The house comprised four bedrooms, a living room, a kitchen and dining area, a puja room and a family zone, and was to be occupied by the client, his wife, their two sons and his parents.

The architects endeavoured to create a home with a timeless design through the use of bespoke furniture, finishes and accessories. As you walk down the lane, your eyes are immediately drawn to the impressive and striking angular facade of this contemporary home, which is flanked by two older, wrinkly mates. The front facade is made of cement with grooves on the surface and does not feature any openings (read windows or doors.) The awning over the porch substitutes for this solidity. The tilted roof is underlined by Mangalore tiles and supported on a triple height column to prevent the house from looking static. "It also provides shade to the

balcony of the master bedroom on the first floor," adds Devang.

In contrast to the almost stoic facade, the interiors are soft and welcoming. A wide-checked teak door opens into the foyer where a muted grey and beige mural of floating dandelions tranquilly marks this transition. The living room is rendered in a tasteful pastel pink with velvet upholstered sofas in the same shade. A classic golden chandelier and pastel blue chairs further bring out the femininity of the colour. The adjoining dining space is connected by a punctured wall in the foyer and carries a similar palette. The teak dining table with an onyx top features chairs wrapped in grey velvet. The adjoining staircase has a similar 'grey with wood' language — with wood railings and grey tiles. The use of these subdued tones in this area allows the pastel pink of the living room, which can be seen in the background, to be the hero. The puja room is situated between the living and dining areas, partitioned by glass. Here, a simple white marble panel with a pattern of peacock feathers in gold leaf and mother-of-pearl ensures all the attention is directed towards the solitary idol in the centre. On the



آموزشگاه انعکاس منبع جدیدترین اطلاعات ، مقالات و دوره‌های آموزشی دکوراسیون داخلی



Habitat



other side of the glass partition lies a water body, which faces the lawn. On the first level, one is welcomed to a small family lounge in the centre. The space is backed by a wooden mural with an inlaid brass pattern, while a blue velvet sofa and chair recall the tones seen in the living room below.

Of the four bedrooms in the house, the client's parents occupy the one on the ground floor. "We chose a yellow and brown palette here for a spirited yet mature mood," explains Pratik. The master bedroom is located on the first floor along with the children's room and guestroom. It has a stately wooden queen-sized four-poster bed set against a calming blue wall. The headboard has been made of statuario marble, which lends the entire space a subtle regal touch. Various shades of Italian marble have also been used in the adjoining master bath, with an accent wall behind the washbasin finished with textured handmade tiles. The children's bedroom echoes a Mediterranean feel thanks to an aquamarine

ABOVE A combination of aquamarine blue and aztec white has been used on the wall of the children's bedroom.

RIGHT A view of the study nook in the boys' bedroom with a table made from new wood and Duco.



MATERIALS

Flooring Italian marble, teak Walls
Paint, teak, marble Furniture Teak,
onyx, new wood


آموزشگاه انعکاس منبع جدیدترین اطلاعات، مقالات و دوره‌های آموزشی دکوراسیون داخلی



ABOVE A stately wooden queen-sized poster bed was designed for the master bedroom. The pale blue hue on the wall and the statuario marble panel behind the bed make for a calming ambience.

LEFT The master bath has been tiled in Italian marble and features a statement wall behind the basin that is covered in handmade tiles.

wall coupled with clean edgy lines of aztec white hues. A small study nook has been created here from new wood and Duco.

While Devang and Pratik were charged with the task of making a bungalow stand out from the others in the neighbourhood, they took an unconventional route to realize this brief. Muted pastels, elegant materials, textural highlights have been brought together to make a statement that is subtle yet impactful, resulting in a home that is a fine study in the adage 'less is more'. 

FACT FILE: Project Yogesh Patel
Bungalow Location Bharuch Area 2,700
sq ft Principal architects Pratik
Siddhpura, Devang Patel Design team
Bhumi Mistry, Divya Shah



At the reception, artist Shunllal Ligade has created a larger-than-life mural in which he has envisioned a giant futuristic two-tiered city which is split into The Upper and The Lower sections. The Upper is where big businesses are located and skyscrapers loom while unending streams of air traffic crisscrosses through the night. In The Lower, where sunlight never reaches, is a haze of artificial lights and flickering holograms, promising entertainment of all sorts. Here common people tend to live and go out and partake in the offerings of the countless establishments promising escape, anonymity, jubilation and more than just a hint of danger.



The mural is created using a variety of techniques and materials including acrylic paints, spray paints, UV paints, multiple metal structures, laser-cut buildings, models, steel cables, plywood, MDF, and a mix of neon, marquee, LED and acrylic lights. All the metal structures for the murals have been created by metal artist Rahul KP. The ceiling lights are fluorescent Plexiglas boxes in a simple geometric form, which lend an intense fluorescent hue to the entire mural.

A Futuristic Cube

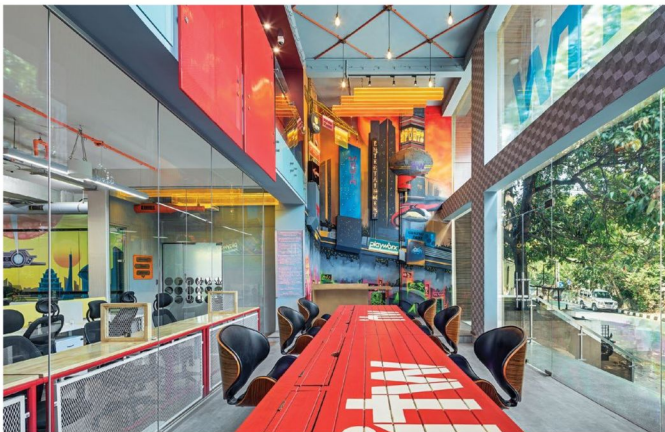
Interior designer Smita Thomas of Multitude of Sins creates an exciting working environment for ITW Consulting in Bengaluru with some inspiration from movie classics — Her, Passengers and Blade Runner 2049. The resultant modern space stimulates the mind, both creatively and meditatively.

TEXT: DEEPA NAIR; PHOTOGRAPHS: SHAMANTH PATIL | COURTESY MULTITUDE OF SINS

آموزشگاه انعکاس منبع جدیدترین اطلاعات، مقالات و دوره‌های آموزشی دگوراسیون داخلی

Enekas.Academy

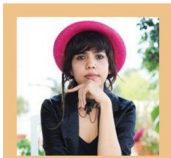
Enekas.Academy



THIS PAGE The seating close to the reception serves dual purpose — a waiting area for visitors and an informal working space for the employees. The custom communal box tables, built from reclaimed hardwood, are painted in bright red with distressed surface graphics and are accompanied by high seating. Note the geometrically laid out conduit lighting which stretches through the entire ceiling here.

Most often offices of media- and sports-based companies conjure up 'where work meets play' imageries. But Bhairav Shanth, the Managing Director and co-founder of ITW Consulting Pvt Ltd — a leading name which specializes in designing and executing multi-faceted brand and celebrity management solutions across sports, entertainment and media — had a different plan for the company's second office in Bengaluru at Vasant Nagar. Bhairav approached the talented interior designer Smita Thomas, who heads the multi-disciplinary design studio Multitude of Sins, with a well-designed brief. "He brought us on board to redesign and transform the public areas of the company viz, the large reception area, the ground floor work stations and the first-floor lounge. His brief to us was to break the mould and create a high-energy, unconventional workspace, which stimulates minds, inspires innovation and impresses visitors and clients — without making any alterations to the existing layout," explains Smita.

After some careful thought, she and her team decided to create a futuristic world for ITW — albeit not the cold, sterile and impersonal environment you would associate with the theme, but one that was immersive, intimate



INTERIOR DESIGNER

Smita Thomas

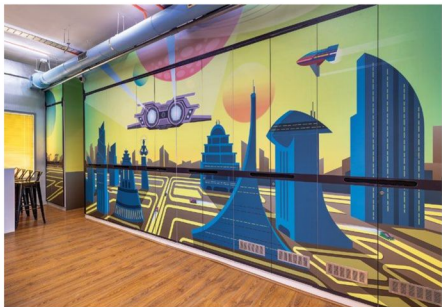


THIS PAGE In the open workspace a prominent wall takes inspiration from the retro-futurism of the movie 'Her'. Made in canvas, the mural art by artist Rahul Chacko, in pastel and bold tones features graphic novel-style panels which are embedded into and around the existing wall space. Each panel features a future experience — from cyber-crickets to space-age holographic concerts — representing the various verticals handled by ITW.

and beaming with all shades of warm colours. The world they envisioned was divided into three separate zones, each inspired from a different sci-fi movie: the unique dystopian future of 'Blade Runner 2049' for an impactful and engaging reception; the retro-futuristic sets of 'Her' for a playful work zone; and the luxurious art-deco elements of the spaceship bar from 'Passengers' for a classy and captivating lounge.

The tone for the entire office was set at the reception, which the designer tells me was an excellent opportunity to create a refreshing new identity for the company. They decided to take a risk and present the brand in a non-traditional way. The owner's requirement for displaying all their affiliate companies at the reception area for both branding and functional purposes came as a boon. This is where the first inspiration — Blade Runner 2049 — came into being. "Instead of a plain arrangement of logos, we took a cue from the movie and asked artist Shannul Ligade to design a 22-foot-tall and 20-foot-wide multi-media mural, with an upbeat take on dystopia, where the different verticals the company focuses on are embedded into the architecture," informs Smita.

With its sheer size, height, and abundance of sunlight, the main open-plan area of the reception almost mimics the feeling of a central courtyard. It serves both as a waiting area for visitors and an informal brainstorming/work zone for the



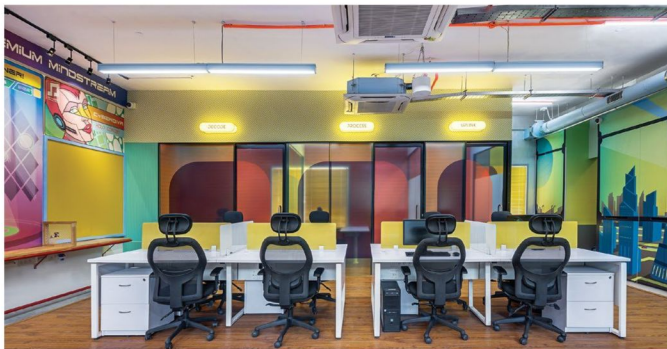
THIS PAGE An otherwise bulky and boring wall of lockers has been converted into a giant view screen which showcases a vista of future India. Using elements from Indian culture and science fiction, artist Rahul Chacko indulged in a bit of speculative design. The architecture models seen in the artwork is a mix of traditional religious structures, modern office complexes and postmodernist buildings.

employees. Custom-made conduit ceiling lights that are arranged in a geometric pattern and extend along the length of the space provide illumination. Pale grey wooden flooring signifying concrete, geometric patterned walls, inverted boxy bay windows, and perforated metal railing, all make subtle references to the futuristic theme.

Inspired from the retro-futurism of the movie "Her", the work area got a colourful, evocative, and friendly upgrade. A mix of private and open-plan workspaces are decorated like a community room, and feature an eclectic range of graphic art, by artist Rahul Chacko, in contrasting pastel and bold tones. In keeping with the forward-thinking, futuristic theme for

MATERIALS

Flooring Laminated wood The Upper and The Lower artwork Acrylic, spray and UV paints; metal; steel cables; plywood; MDF; and neon, marquee, LED and acrylic lights. Her artwork Canvas The artwork concealing the lockers Vinyl Telepods Glass, graphic films Furniture Reclaimed hardwood, solid wood, leather, Corian, cast iron grills



CONCEPT: To redesign the public areas of an office and to create a high-energy, unconventional workspace, which stimulates minds, inspires innovation and impresses visitors and clients.



THIS PAGE The Telepods, or private booths, are accessible to everyone and gets privacy through glass doors which sport custom graphics on films designed by artist Rahul Chacko. The high gloss wooden wall inside is clad in bright orange that lends a punch to these private booths.

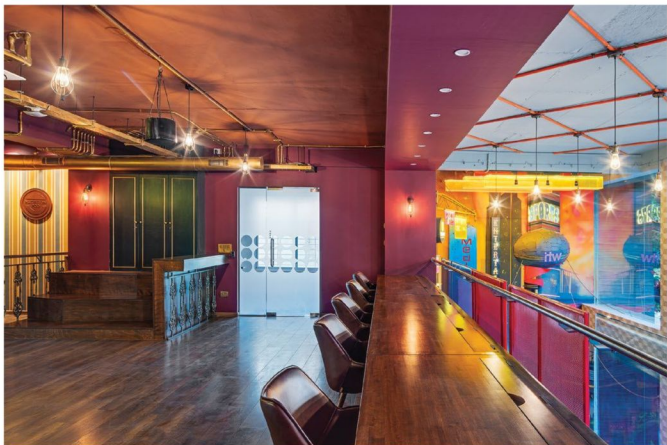
the whole office space, the mural features graphic novel-style panels embedded into and around the existing walls, so that each panel is a window into a future experience, from cyber-crickets to space-age holographic concerts, representing the various verticals handled by ITW. These high-production snippets of exciting moments create an energetic environment encouraging the team to strive for excellence.

One wall in this open office set-up, aka the wall of lockers, is converted into a giant screen that looks out onto a vista of future India. Using elements from Indian culture and classic retro science fiction, Rahul indulged in a bit of speculative design. The architecture is an amalgamation of traditional religious structures, modern office complexes and postmodernist buildings. "The layout has been subtly engineered to project the locker fronts as individual glass panels/view screens that each form part of a bigger whole. This way, the illusion holds true without the need to alter the physical structure. The scenic view balances out the high-production snippets of exciting moments on the opposite wall, by offering a peaceful window into an intriguing world. This balance lends fluidity to the energy in the office, allowing you to switch between upbeat and meditative, depending on the view you choose to take in," asserts Smita.



ABOVE The movie "Passengers" was the inspiration for the first floor lounge — it features a luxurious art deco-style bar and lounge. This large space is designed like a home with its open-plan living and dining room, kitchen and washroom. The giant screen and flexible seating here allows employees and guests to watch live streams of popular sporting events that the company organizes.

LEFT In line with the retro-futuristic theme, the distinction between the men and women's restrooms is depicted through renderings of men and women from the future. The design team has toyed with fashion and grooming, as well as the idea of gender roles: the man is decked in a sleek outfit that takes inspiration from Starfleet uniforms, while the woman is wearing action-ready power armour.



THIS PAGE A Nutrition Pod occupies the first floor lounge. Tucked away in the corner is a big refrigerator stocked with healthy food choices for the employees and guests to indulge in. To demarcate the area, Smita created a facade with an eclectic edge using a full height, wooden French-styled glass partition, retro wallpaper, engraved wooden signage, and a antiqued mirror glass diamond pendant light. Adjacent to this nook are high breakfast counters made of wood and cast iron grills with casual wooden steps. During game screenings, these auditorium style steps also provide extra seating.

Right opposite the view screen wall are a line of what Smita calls the Telepods, or private booths. These glass-walled telephone booths have been fitted with custom graphics and organized into three separate pods called Decode, Process and Uplink. The signages are acrylic lightboxes and the glass structure is custom gradient films designed by Rahul, again.

The first floor lounge is inspired by the grand art deco-style bar and lounge from the movie 'Passengers', and is designed as a warm jewel box that contrasts with the other spaces on the ITW mothership. The layout is akin to a large, open-plan living and dining room, and intended for a plethora of uses. It features an eclectic mix of furnishings, from plush leather

sofas in the centre for informal conversation and meetings and a long art deco-style wooden desk with leather chairs where employees can work. One of the key areas ITW specializes in is organizing popular sporting events domestically and overseas and the open plan set up and flexible seating allows employees and guests to watch live streams of the events on the giant screen installed in the lounge. Additionally, there is a conference room, a nutrition pod with specially-designed breakfast counters and an art deco-styled washroom.

Truly, Smita's sci-fi and futuristic designs have created whimsically eye-catching areas that the team at ITW would definitely like to come back to day after day after day. 📌

FACT FILE: Project ITW Consulting Pvt Ltd Client Bhairav Shanth
Location Vasanth Nagar, Bengaluru Area 2,500 sq ft Principal designer Smita Thomas Design team Rahul KP, Rachita Murthy Graphic artist Rahul Chacko Mural artist Shunna Ligade Metal artist Mechanical Furniture Be Vintage Canvas, vinyl and glass prints Wall Queen Interiors Electricals Mohammad Hussain

Off the Shelf

A view of the deeper end of the ground floor showroom. Billemi Grey marble has been laid on the floor with hexagonal shapes demarcated by strips of Golden Embress marble.



آموزشگاه انعکاس منبع جدیدترین اطلاعات ، مقالات و دوره‌های آموزشی دکوراسیون داخلی



Above A Cut

Architect Andrea Milani of Italy-based Studio Milani creates a gallery-like atmosphere for the HMG Stones showroom in Bengaluru. The elegant design takes inspiration from the shape of a turtle's shell and maintains a sleek yet simultaneously rough connect to nature.

TEXT: ALIFIYA MEHAMDABADWALA; PHOTOGRAPHS: PALLON DARUWALA, COURTESY HMG STONES

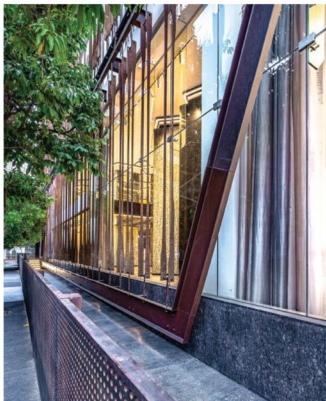
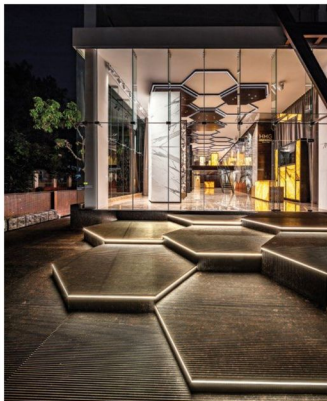


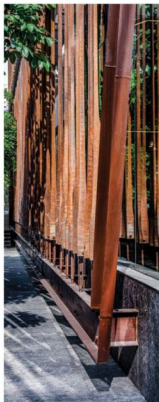
HMG Group started off as exporters of marble and granite slabs, tiles and blocks to major international destinations like US and Canada in 1986.

After gaining profound industrial exposure and knowledge in both international and domestic market, in 2012 the group launched HMG Stones to explore the tremendous potential in the marble and granite industry in India. Taking this journey one step ahead, the owner Anand Reddy, decided to open a dedicated HMG Stones Gallery in Bengaluru. To realize this vision, he commissioned architect Andrea Milani of Italy-based Studio

Milani, whom he had met during the annual stone fair at Verona where Andrea was a finalist. Anand was fascinated by the architect's creativity and design sense, and Andrea, who specializes in museum design, was excited to get on board — and the positive vibes which he got after visiting the site sealed the deal.

Anand's design brief for the showroom was not simple. "I always had an idea of 1, Sankey Road, being a premium up market location and wanted the showroom to be like a theatre or drama stage with endless new designs — the stones being portraits, and people passing by, the audience," explains Anand.





THIS SPREAD Lush green trees surround the building. The ground and mezzanine floor of the showroom can be seen through the glass facade on the left side of the building. Corten steel bars have been used to create the striking facade, which purposefully acts as a way of insulating the interiors from outside noises as well. The outside barricade has been constructed from perforated corten steel and proudly showcases the illuminated name of the showroom. The illuminated hexagon-shaped steps leading to the entrance create a beautiful effect at night. Notice the same patterns on the ceiling inside the showroom as seen through the glass panels.



آموزشگاه انعکاس منبع جدیدترین اطلاعات ، مقالات و دوره‌های آموزشی دکوراسیون داخلی





CONCEPT: To design a showroom to display marble, granite and other stones in a trendy, gallery-like setting.

Incorporating this brief, Andrea's design took inspiration from one of the oldest living creatures, the turtle. While the turtle is distinguished by its unique asymmetrical hard shell, natural stones too are found in a variety of colours and shades and are asymmetrical in nature. "The entire concept was to associate the design with nature and give visitors a similar feel when they walked into the showroom," informs Andrea. Both the exteriors and interiors were therefore planned in a way that the natural stones and granites could blend with the other aesthetic elements featured in the showroom.

Spread over an area of 6,500 sq ft, the showroom consists of a ground floor and mezzanine. Currently, it has an inventory of more than 200 varieties and colours of marble (both Indian and Italian), granite, travertine, onyx, quartzite, limestone, sandstone, soapstone — all available in around 50 finishes. It also stocks semi-precious stones which are transparent in nature. Here customers can explore the differences of each stone, and gain detailed information about the texture, quality, grain structure and the application of stones for various purposes.

But before we enter the luxurious interiors, the impressive facade of HMG Stones needs special mention. It has been entirely constructed from glass and corten steel so that the exterior blends well with the nature outside. The iron fencing also acts as a soundproof barrier that minimizes the amount of outside sounds that can be heard inside the showroom. "We have used old steel stone-cutting blades to design our building, which aligns with our sustainable use of resources," informs Andrea. A feature worth mentioning is the introduction of stone blocks (read



ABOVE Asymmetrical hexagons, alluding to the designs found on a turtle's back, can be found on the ceiling, floor and the walls. The marble and granite slabs of various varieties have been placed on the wooden wall, presented like artwork you would see in a gallery. They have been fixed using a special glue and steel clamps.

LEFT A reception area has been created on the right side of ground floor of the showroom.

MATERIALS

Flooring Bellami Grey marble, Golden Empress marble, Italian Extra marble
Walls Corten steel, Italian marble





CLOCKWISE, FROM TOP LEFT The backlit Brown Sugar onyx bar counter on the ground floor is a beautiful example of the application of the material in home decor.

When you look down while walking up the tinted glass staircase, you are instantly reminded of watching stones under a shallow riverbed.

A glimpse of the Quantum Blossom marble displayed on a vertical panel on the ground floor.





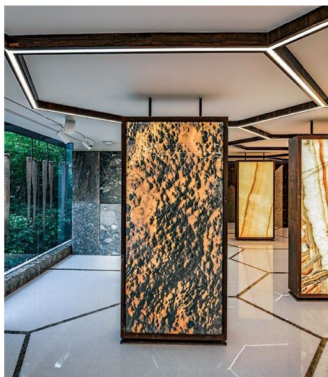
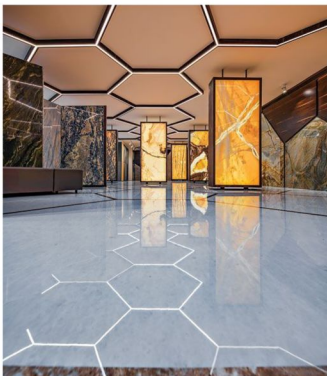
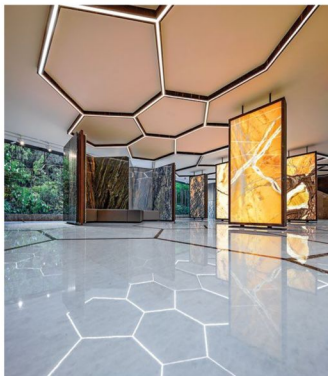
seaters) around the building which, rather than restricting the showroom to just a few, encourages passers-by to sit and enjoy the view within the showroom — much like an art gallery. This conscious design introduction also makes the building a landmark of sorts with its inviting nature. The steps leading up to the entrance of the showroom are hexagonal in shape and illuminated by LED strips on the edges. This particular shape is inspired by the carapace of the turtle and the motif also recurs on the ceiling and flooring of the entire showroom, tying the exterior with the interior and further reinforcing the theme.

As one enters the showroom, the double-heighted ceiling coupled with the life-size stone slabs on the walls and on display panels positioned in different designs, colours and patterns exude a sense of awe. Special glue and steel clamps were used to hold the stones on the wooden wall. The reception table is placed on the right on the ground floor while four vertical omega-shaped display towers stand towards the left. The low-heighted area towards the deeper end displays marble and limestone finishes. The staircase leads up to the mezzanine floor which displays exotic granites, onyx, quartzite polish and other finishes. Each of these stones are presented in their natural form.

ABOVE Various stones have been exhibited on the partition on the mezzanine floor that also includes a seating area. This space gives a feeling of viewing some spectacular artworks while sitting in an art gallery.

RIGHT Wooden strips have been used to create these hexagon lights on the ceiling. Each hexagon is of a different size, shape and angle.





ABOVE LEFT & RIGHT

The hexagon lights are reflected on the Italian Extra marble flooring of the mezzanine level. The backlit panel here displays Mangifera onyx.

LEFT As with the ground floor, Golden Empress marble strips have been used on the mezzanine to replicate the exact hexagons on the ceiling. Inchiostro onyx has been displayed on the panel pictured.

Billemi Grey marble has been used for the flooring on the ground level while Italian Extra marble has been laid on the mezzanine. Complementing the exquisite stones that are displayed in the showroom are the eye-catching hexagon-shaped light patterns on the ceiling which have been created using wooden strips and replicated with Golden Empress marble strips on the floor. "Each hexagon differs from the other in angle and shape just like a turtle's back," explains Andrea.

Through the incredible effort of Andrea and team, an idea was transformed into a magnificent reality. The HMG Stones gallery, through its timeless design, focussed concept, and faultless execution sets a benchmark in the natural stones segment for all to witness. **■**

FACT FILE: Project HMG Stones
Gallery Location Bengaluru Area 6,500
sq ft Principal architect Andrea Milani
Design team Studio Milani



Space & Spice

A view of Kube's terrace section, with the VIP area delineated by a variegated tile flooring. Various styles of seating — some 15 types of chairs and sofas and ten varieties of dining and lounge tables — keep things from slipping into monotony, as well as cater to different preferences. The existing framework of columns and beams was cleverly used for zoning and configuring the lighting system.



آموزشگاه انعکاس منبع جدیدترین اطلاعات ، مقالات و دوره‌های آموزشی دکوراسیون داخلی





The Kube Route

Mayur Gujare and Deval Shah of Saga Design Architects construct a stylish narrative underpinned by a raw, weathered aesthetic out of a derelict space for Kube club and lounge in suburban Mumbai.

TEXT: RUPALI SEBASTIAN | PHOTOGRAPHS: © 2018 PHOTOGRAPHIX | SEBASTIAN + IRA, COURTESY SAGA DESIGN ARCHITECTS

آموزشگاه انعکاس منبع جدیدترین اطلاعات، مقالات و دوره‌های آموزشی دکوراسیون داخلی

 Enekas.Academy

 Enekas.Academy





ABOVE The passage that traverses almost the entire length of the club and takes you to the open terrace area. One side of it is lined in 8"x8" concrete blocks designed and manufactured by local craftsmen. The concrete cubes were the result of an experiment in recycling concrete from old sites by mixing it with a few other materials.

RIGHT The passage culminates at this door, a classic '70s piece used in as-is condition. The project has used several doors and windows from old houses, aged between 60 to 75 years.



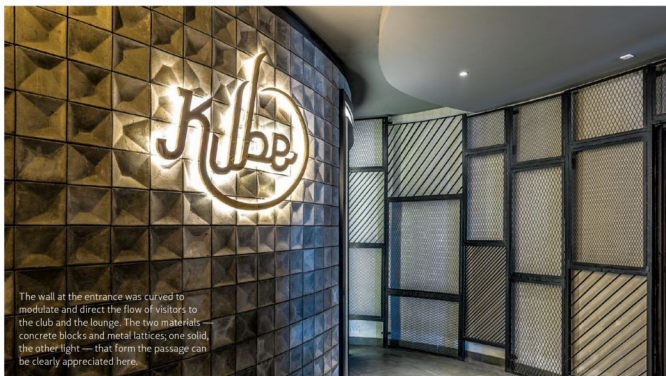
ARCHITECTS

Deval Shah and Mayur Gujare

What would you do if you were presented with a weather-beaten terrace with a raw framework of columns and beams.

Well, if you were Mayur Gujare and Deval Shah of Saga Design Architects, you'd turn it into

Kube, the latest go-to nightspot in suburban Mumbai. The aged, worn-down state of the site, when they first visited it, in fact, became an important cue to the aesthetic and material direction of the 12,000-square-foot lounge that now brings together an eclectic palette of raw brick, concrete, old doors and windows and metal lattices, among other things.



The wall at the entrance was curved to modulate and direct the flow of visitors to the club and the lounge. The two materials concrete blocks and metal lattices; one solid, the other light — that form the passage can be clearly appreciated here.

CONCEPT: To create a terrace lounge using natural light, air and greenery which would feel almost like the backyard of a home. The attendant enclosed space was to be treated as a light and energy-filled den.



The seating was positioned in an open location to maximize an important element of the decor, to create the sense of being in a landscaped place.

Space & Spice



Brick partitions have been gently inserted to modulate the space as well as the views, creating intimate, almost home-like corners and nooks. Beams lined with metal mesh framed keeping two inch gap between the two to create interesting shadows.



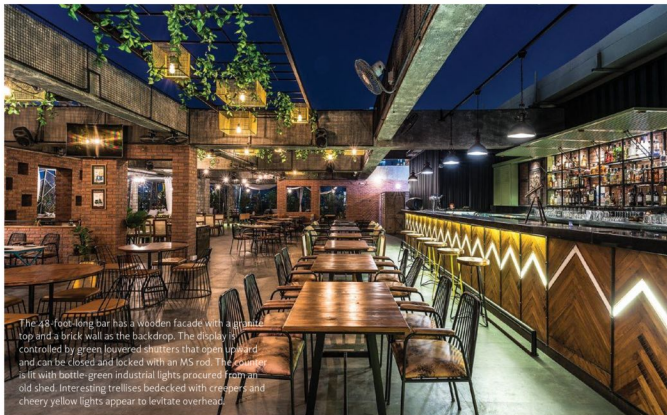
Though the terrace uses tiles throughout the flooring, shifts in colour and finishes signal a change in section. Here, this strategy achieves a clear distinction between the section that faces the kitchen (variegated arrangement of shades of grey) and general area (cudappa-finish tiles). Nearby (not seen in the photograph) cabanas are distinguished by patch of green tiles, while the VIP section boasts a chequered pattern.



At the far end of the 120-foot-long terraces are six cabanas that can hold upto 20 people each. A metal structure with fabric roofs and sheer curtains, each one has two group seatings comprising a wooden cushioned sofa with two lounge chairs and a rocking chair. The cabanas allow you to be part of the hustle and bustle, yet be away from it.



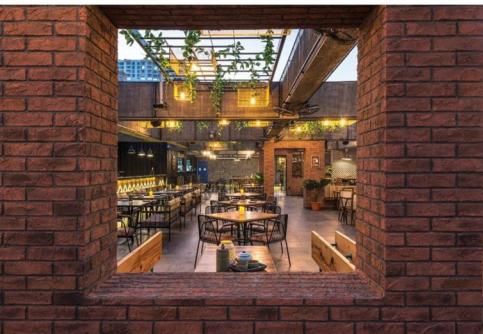
The space is lit low to enjoy the starry nights. Lights are floated from the grid of beams using metal lattices, to glow pools of light on the guests directly and indirectly.



The 48-foot-long bar has a wooden facade with a granite top and a brick wall as the backdrop. The display is controlled by green louvered shutters that open upward and can be closed and locked with an MS rod. The ceiling is lit with bottle-green industrial lights procured from an old shed. Interesting trellises bedecked with creepers and cheery yellow lights appear to levitate overhead.

آموزشگاه انعکاس منبع جدیدترین اطلاعات ، مقالات و دوره‌های آموزشی دگوراسیون داخلی



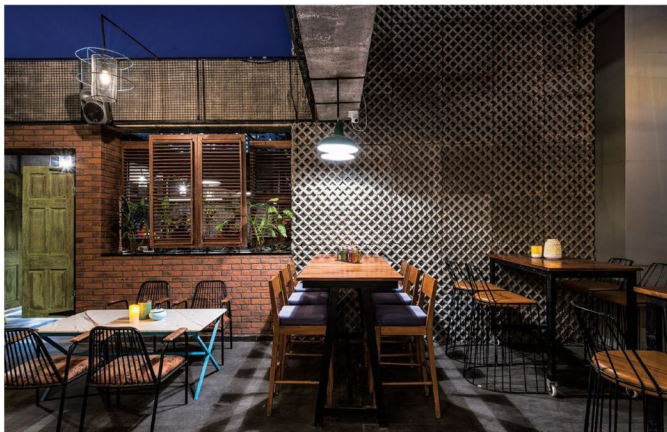


THIS SPREAD Textures abound. The partitioning strategies — which use raw brick and concrete joists — and columns clad with the 3D concrete cubes lend sophisticated rawness to the space. Additionally, the brick insertions allowed the architects to mould views and create interesting sightlines.

"On our first visit, we saw a 4,000-square-foot, low-ceilinged enclosed area that opened up to an open-to-sky terrace slab of 8,000-square-foot, with a grid of raw concrete columns and beams. The first impression of the site created a feel of stepping out from a home and into a backyard,

MATERIALS

Walls of the club lobby Wooden slats Club walls PU-coated wooden cubes inset with black mirror Club flooring Malaysian wood Passage walls Customized concrete panels and metal lattices General seating on terrace Tile, leather-finish granite, marble and wood (table tops) and metal/wood chairs Terrace flooring Cudappa-finish tiles (general area), tiles in shades of grey and black (area near the kitchen) and pastel green tiles (cabanas) Partitions on the terrace Brick, metal lattices and concrete joists Cabanas Metal frame draped with white sheers Cabana seating Upholstered wood sofas and chairs and metal-based pinewood/teakwood-top tables Open kitchen backdrop Metal sheeting Terrace bar counter Wood and granite Terrace bar backdrop Brick Cladding of beams on terrace Metal mesh



which would host parties with live music... That's when we decided on the concept of designing this space as a 'Backyard of the House,'" reminisces Deval.

With the presence of an enclosed area and an open-to-sky terrace, the decision, naturally, was to create a lounge that would make use of both, in the form of a club with a dance floor and a terrace lounge. Having worked with the client on hospitality projects earlier and, having established a comfortable working relationship, the brief the architects received revolved only around a few functional requirements — the number of covers, flexibility of configuration. All the aesthetic considerations was left to the design team.

While the enclosed space was beset by a narrow entrance lobby, dinginess and a diminutive height of 9'6", the terrace came with its static weathered structural grid — "almost like romantic ruins" — and exposure to elements. The wall of the enclosed space created a long passage leading to the terrace. "But where is the fun if there are no challenges," smiles Mayur. "Such 'obstacles' always open up doors to possibilities of conquering them." Over and above these programmatic challenges was the timeline: they had to complete the entire project in four months flat!

While some may find an existing framework straitjacketing, for Mayur and Deval it gave a sense of zoning, besides serving to hold lights. Into this system, they introduced exposed brick walls to divide, add, subtract and make volumetric alterations to craft and carve seating or visual aspects in the sky lounge. In the case of the club, "we curved the wall to create an eye-shaped cut-off lobby that also widened the entrance lobby. The cut-off lobby is an introduction to the dance floor and restricts the sound from travelling out. Curving the wall also allowed the management to divert the crowd either to the club or the lounge," reveals Deval. When it came to the height, the architects did something smart: instead of drawing attention away from the ceiling, they treated it as a design highlight, with stunning DMX lights in the format of a square grid that spreads across the ceiling and drapes the bar and DJ shell. "We got these lights to bring in the energy, ambience and the music. The ceiling is conceptualized as graphic moving bars of an equalizer, pumping the music and dance."

When it comes to the spatial configuration, broadly speaking, beyond the main entrance door lies the entrance lobby, from which you either enter the lobby (or the cut-off lobby, as the architects call it) to the Club, or move along a long passage lined with customized



A little in-set along the entrance passage brings you to the washrooms aka Thinking Room.

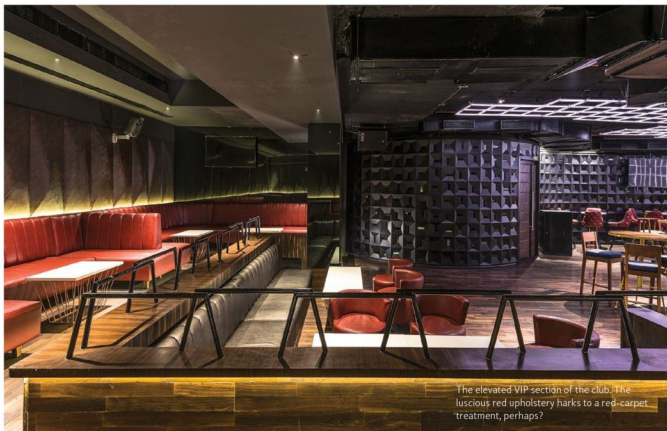
8"x8" concrete panels (manufactured using recycled concrete and a few other ingredients) on one side and a metal grid wall bedecked with fun posters — until you come across a classic '70s-style door with mouldings and glass insets. Beyond this, unfolds the terrace lounge.

The zoning of the club is simple: bar, DJ counter, the dance floor and an 'arena' for VIPs. "We planned the arena as an elevated area so that guests could enjoy the dance floor, the bar and the lights. We couldn't go too high because of the height restriction, but even this degree of split-level has proved to be adequate," reveals Mayur. The walls of the club are designed with PU-coated wooden blocks which are similar to the concrete ones in the passage. The only difference is a small mirror inset in the centre which serves to display the aforementioned stunning DMX lights that add a different dimension to the spatial experience. The DJ counter is also an exploded form of this cube holding the woofer in its centre.

Coming to the terrace lounge, the area is carved into a large central 'general' seating area, a long open kitchen on the right with a backdrop of a shipping container-like metal sheeting to underscore the raw, industrial aesthetic, followed by the 48-foot-long bar.

The portion at the far end forms the L-shaped VIP area, comprising six cabanas, pockets that allow you to be part of the high-energy proceedings and yet enjoy some privacy. The general seating section is apportioned into a series of individual areas through shifts in flooring patterns. For instance, the seating section abutting the kitchen is floored in tiles arranged in striped pattern of shades of grey and black, while the remaining portion features cudappa-finished tiles. Intermittent insertions of raw brick walls and old, salvaged doors serve the same purpose, by modulating the space into cosy corners, in addition to framing views and directing the eye to interesting compositions.

The colour and material palette was dictated by the site — raw and fresh and airy. Ergo, concrete, brick, metal, rustic tiles, natural stone and old wooden elements (raw) and lots of greenery, cheery-hued light fittings and furniture (fresh). "Airy" came by way of maintaining its al fresco nature. "The idea of using natural materials came from the clear thought of ease of maintenance. In fact, these materials look more beautiful as they age," says Deval. In addition to their evergreen charm, natural plantation was a significant part of the material palette as the "use of plants along the periphery created a sound barrier that controlled the noise within the



The elevated VIP section of the club. The luscious red upholstery harks to a red-carpet treatment, perhaps?



State-of-the-art lighting envelops the bar of the club.

آموزشگاه انعکاس منبع جدیدترین اطلاعات ، مقالات و دوره‌های آموزشی دکوراسیون داخلی





THIS PAGE The dark, dingy appearance of the den-like enclosed space is erased with the help of DMX lights that ape the graphic display of a music equalizer. With this clever move, the architects focused the user attention on the ceiling rather than its low height. The spectacular light-works have proven to be a big hit!





ABOVE LEFT The entire club is panelled in black PU-coated wooden cubes, much like their concrete counterparts seen in the passage outside and on the terrace. The only difference is the little sliver of black mirror at their heart, which serves to reflect the lighting and multiply its immense energy.

ABOVE RIGHT The entrance to the club.

terrace and also minimized its percolation into the surroundings. Besides this, the greens take the edge off the warm air, making the environment more comfortable.”

In addition to materials, lighting, too, plays a role in sculpting the largely wall-less space into intimate pockets and varying ambiances. The general lighting is low to allow guests to enjoy the beauty of moonlit/starlit nights. The lights are floated from the matrix of beams directly, or with the help of metal lattices, in groups. The fixtures take geometrical forms, both rigid and soft, and are coloured in light-hearted shades that add a striking counterpoint to the predominantly raw, earthy aesthetic. The cabanas are illuminated with dim chandeliers, while elsewhere strings of bulbs, hung loosely across the beams, infuse an effervescent festivity into the proceedings.

Working with a space that hadn't too much going for it, Mayor and Deval have created a go-to party destination that gets together everyday materials to build up a narrative that is replete with style and substance. A space that reveals itself step by step, surprising visitors with the variety of ambiances it has to offer. **IN**

FACT FILE: Project Kube Client BR Shetty (BR Restaurants Pvt Ltd) Location Andheri West, Mumbai Area 12,000 sq ft Concept and interior design Mayor Gujare and Deval Shah Principal architects Mayor Gujare, Deval Shah Design team Chaitali Mistry, Mayor Aer Upholstery, colour scheme, design detail and interior styling Bluesheep Plumbing, electrical, mechanical, HVAC, acoustics and interior contracting Saga Interiors & Services Furniture Saga Interiors & Services and Bluesheep.in Tiles Decoreta Plus Concrete panels Saga Interiors & Services with local craftsmen

آموزشگاه انعکاس منبع جدیدترین اطلاعات ، مقالات و دوره‌های آموزشی دگوراسیون داخلی



Gallery

Air purifiers, efficient refrigerators, smart lights and more...



KITCHENAID

KitchenAid India has unveiled a series of induction hobs. This includes Made to Measure Hobs, Domino Induction Wok Hob, Domino Teppanyaki Hob and Chef Sign Cooking Modules. The hobs are designed with features like the sensor function that can detect when a pan reaches boiling point; multiple heat settings; flexible zones that can be linked to manage large pots and pans; the booster function which speeds up the cooking process by increasing power to 3.7kw (and 5kw in selected models); and Power Management that allows you to set the maximum power to suit your home's power supply.

PRICE ON REQUEST



PHILIPS

The Mario (AC3821) 2-in-1 air purifier and humidifier by Philips comes equipped with NanoCloud humidification technology, so it not only purifies the air but also maintains optimum humidity in the room. It removes pollutants and allergens as small as 0.003 um from the air, along with dust, smoke and pet dander. The extra-sensitive Allergen Mode boosts the fan speed when it detects minute increase of allergens in the air; the smart humidity sensor shuts off automatically to prevent over-humidification; and the AeraSense technology automatically monitors the indoor air and gives real time feedback on pollution levels in the room.

₹ 37,995



PURESIGHT SYSTEMS

iRobot's Vacuum Robot Roomba 671 is a Wi-Fi-connected robotic cleaning device with powerful suction. Sleekly designed, it seamlessly navigates throughout the house, including hard-to-reach areas such as under the couch and bed. It can be used for an hour at a time and automatically returns to its charging station to recharge. The device has a three stage cleaning system and an AeroVac filter that uses tangle-free, multi-surface brushes that can remove embedded dirt, dust, mites, and allergens. The roomba can be controlled remotely via the iRobot Home smartphone app.

PRICE ON REQUEST



FANZART

Fanzart has introduced the Aqua Jet, a premium IP 54 certified mist fan. The device is constructed in shape of a jet engine, equipped with the wheels for easy mobility and durability. The fan comes with a water spray, that releases a cool, refreshing breeze and a motor that enables powerful air delivery and almost negligible air cutting noise. It provides a drop in temperature of upto eight degrees celsius over an area of 95 square metres. The fan is best suited for outdoors, and available in a wall-mount version.

PRICE ON REQUEST

COMPILED BY: BASHIMI KARANJEKAR, PHOTOGRAPHS: COURTESY THE BRANDS

آموزشگاه انعکاس منبع جدیدترین اطلاعات، مقالات و دوره‌های آموزشی دکوراسیون داخلی



DURAVIT INDIA

The recently launched Brioso bathroom furniture range is a refreshing contemporary approach to bathroom design by Christian Werner. The washbasin vanity units come in five different widths, the consoles are available in two different thicknesses and can be combined with vanity units with widths of 30cm to 80cm and console washbasin vanity units of 62cm to 100cm. The tall cabinet and semi-tall cabinet offer added storage. The furniture is available in 15 finishes, including real wood veneers or lacquers, and in on-trend tones such as matte light blue and matte concrete grey. Matching mirrors and mirror cabinets are also available with 300 lux-strong LED edging light at the top.

PRICE ON REQUEST

SYSKA LED

Syska LED has introduced Wi-Fi-enabled smart lights which are compatible with Amazon Alexa and can be linked to Amazon Echo smart speakers. Once synced with the Echo, Echo Dot or Echo Plus, Syska Smartlights can respond vocal commands. You can also set up routines so that a single command can trigger multiple actions, from switching on your bedroom and bathroom lights to turning on your water heater. The lights can also be controlled using the Syska Smart Home app. The app gives you the option to choose your shade of light from a spectrum of three million colours.

PRICE ON REQUEST



ALUDECOR

Aludecor's latest 3mm fire retardant aluminium composite panels (ACP) have been launched in major Indian metros like Kolkata, Mumbai, Delhi and Chennai. They can contribute significantly towards preventing building fire casualties. The panels are available at rates comparable to their non-fire-retardant counterparts, where the additional cost is calculated over the standard installation cost per square foot per month on a 10-year warranted ACP. They can slow down the spread of flames and release of heat for up to two hours, and suppress smoke as well.

PRICE ON REQUEST

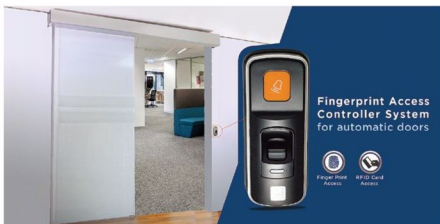


ROCA INDIA

Roca has introduced a variety of products for basin and bath-shower mixers that are suitable for any contemporary bathroom. The brand has also launched the Naia single lever faucet collection, which is available in cylindrical and square shapes and four height options. Besides, the ceramic cartridge of the faucet is equipped with cold start technology, which offers the convenience of cold, mixed and hot water. Strengthening its existing collection, Roca has debuted new wall-mounted basin mixers under its L20, Atlas, Lanta and Escudra faucet ranges.

PRICE ON REQUEST

Gallery



OZONE OVERSEAS

Ozone has unveiled the Fingerprint Access Controller Device which can be integrated with an automatic door system. This new smart device is engineered to deliver much greater benefits than just the opening of a door. It enables you to operate the automatic door with either fingerprint or RFID card authentication. It comes with a SD Card slot that can facilitate transfer of last access history if required, to check details of people who operated the door, and is equipped with a doorbell and sleep mode function. This system runs with a working voltage of DC 12V.

PRICE ON REQUEST



MITASHI EDUTAINMENT

Mitashi has added seven new Xtreme Heavy Duty air conditioners in a variety of sizes, viz 1 ton, 1.5 ton and 2 ton. These models are designed for heavy usage and are suited to homes and offices alike. The new range offers super silent operation, wide and long airflow, a hidden LED display, remote control with display, low-power consumption, auto restart, wide voltage operation range, sleep timer, anti-bacterial filter, auto clean function and turbo cooling. It has been manufactured according to 2018 energy efficiency norms.

PRICE ON REQUEST



HAIER APPLIANCES INDIA

Haier's new series of direct cool (DC) refrigerators with a five star rating is available in a glass finish and beautiful floral patterns. These refrigerators are equipped with high quality, heavy duty compressors for limited energy usage that helps reduce power consumption by consuming 0.35 units of electricity in a day. They also feature a special one-hour icing technology that can make ice in just 60 minutes; it is embedded with a thick PUF insulation and longer condenser coils for effective cooling; can run without a stabilizer; and are CFC free.

₹ 19,050 TO ₹ 23,050



AISEN

From the house of Vishal Video & Appliances, Aisen has introduced the UHD HDR smart television A55UD970 that offers unprecedented colour levels, life-like picture quality, exquisite brightness, Dolby Digital Audio and a wide viewing angle. The 4K UHD display is packed in a slim bezel design with zero pixel defect, thanks to the A+ Grade panel. The 20 W speakers offer sharp and loud audio that complements the HD quality of the video. The TV comes with several connectivity options like two distinct USB ports, three HDMI ports and an AV input. It is also equipped with an advanced E-share app, Aptoid store, power-saving mode and more.

₹ 52,990

آموزشگاه انعکاس منبع جدیدترین اطلاعات، مقالات و دوره‌های آموزشی دکوراسیون داخلی

directory

HIGH FIVE

GODREJ APPLIANCES

Godrej & Boyce Manufacturing Company Ltd, Pirojshanagar, Vikhroli, Mumbai 400079; Tel: (022) 67965656/5959; (022) 67961700/1800; Email: smartcare@godrej.com; Website: www.godrejappliances.com

HAIER APPLIANCES INDIA PVT LTD

Building Number 1, Okhla Industrial Estate, Phase III, Opposite Modi Mill, New Delhi 110020; Website: www.haier.com

LG ELECTRONICS INDIA PVT LTD

A Wing (3rd Floor), D 3, District Center Saket, New Delhi 110017; Website: www.lg.com

MIELE INDIA PVT LTD

1st floor, Copia Corporate Suites, Commercial Plot No 9, Mathura Road, Jasola, New Delhi 110025; Tel: (011) 46900000; Fax: (011) 46900001; Email: info@in.miele.com; Website: www.miele.in

PANASONIC INDIA PVT LTD

12th Floor, Ambience Tower, Ambience Island, NH 8, Gurugram 122002; Tel: (0124) 4871300/4683800; Website: www.panasonic.com

SWISH LIST

BENT CHAIR

Website: www.bentchair.com

CARNITURE

20 Okhla Industrial Estate, Phase 3, New Delhi 110020; Mobile: 9811005555; Email: support@carniture.in; Website: www.carniture.in

CUROCARTÉ

Website: www.curocarte.com

GULMOHAR LANE

Website: www.gulmoharlane.com

INTIKI

Website: www.intiki.in

SCRIPT

Website: www.scriptonline.com

THE DECOR KART

The Decor Kart Select Citywalk, LG 05, Select Citywalk, Saket, New Delhi 110017, Mobile: 8448922472; Website: www.thedecorkart.com

VIBHOR SOGANI

Silver Oak Farms, Mehrauli Gurugram Road, New Delhi 122001; Mobile: 9810950888; Email: info@vibhorsogani.com; Website: www.vibhorsogani.com

WISMA ATRIA INTERIORS

F 208, Old MB Road, Lado Sarai, New Delhi 110030; Tel: (011) 41076115; Email: arjun@wismaatria.in, nomita@wismaatria.in; Website: www.wismaatria.in

BAZAAR

BAAYA DESIGN

Pratamesh Tower, Raghuvanshi Mills, Lower Parel, Mumbai 400013; Tel: (022) 65210165; Website: www.baayadesign.com

BARO

12, Sun Mill Compound, Lower Parel, Mumbai 400013; Tel: (022) 40344888; Email: info@baro-india.com; Website: www.baro-india.com

BEYOND DESIGNS

Khasra No 432,433, 434, Ground floor, Sultanpur (Pillar No P 89), M G Road, New Delhi 110030; Tel: (011) 26804180/ 26804183; Email: contact.beyonddesigns@gmail.com; Website: www.beyonddesigns.in

CANE BOUTIQUE

273, Amarjyoti Layout, Intermediate Ring Road, Domlur 2nd stage, Bengaluru 560071; Tel: (080) 41152093; Email: info@caneboutique.com; Website: www.caneboutique.com

CLAYMEN

Shed No 23 B, The Dhan Mill Compound, SSN Marg, Chattaraj, New Delhi 110074; Tel: (011) 64546562; Email: contact@claymen.in; Website: www.claymen.in

COTTONS & SATINS

1, Mohatta Compound, Off Dr E Moses Road, Worli, Mumbai 400018, Tel: (022) 40143005

CUROCARTÉ

Website: www.curocarte.com

DASH SQUARE

No 303, 7th Block, 3rd Stage, Banashankari, 4th Phase, Bengaluru 560085; Mobile: 9035419911; Website: www.dashsquare.com

FANUSTA

Email: info@fanusta.com; Website: www.fanusta.com

I'M CENTRE FOR APPLIED ARTS

A 15 Lalpat Nagar 2, Feroze Gandhi Road, New Delhi 110024; Tel: (011) 48780006; Email: info@imcaa.in; Website: www.imcaa.in

IOTA

Iota Boutique Furniture, 1/45 WHS Kirti Nagar, New Delhi 110015; Mobile: 9958492212; Website: www.iotafurniture.com

IQRUP + RITZ

Studio 392 Udyog Vihar, Phase IV, Gurugram; Tel: (0124) 4237613; Website: www.iqrupandritz.com

LOOM CRAFTS

Website: www.loomcrafts.com

OCHRE AT HOME

605, Continental, 83/ 2/ 1, Topsis Road South, EM Bypass, Kolkata 700046; Mobile: 9830939995; Email: info@ochreathome.com; Website: www.ochreathome.com



Directory

OUTLIND

Mobile: 931662011/ 9910699658;
Email: contact@jhunjhun
jain.com; Website: www.
jhunjhunjain.com

PEPPERFRY

Website: www.pepperfry.com

STUNICOM

Website: www.stunicom.com

SANS SOUCI

Mobile: 9818995920; Email:
sandeep.kaushik@ss-gd.com;
Website: www.ss-gd.com

SHADES OF INDIA

A 74, Sector 57, Noida 201301; Tel:
(0120) 4187400; Website: www.
shadesofindia.com

STUDIO WOOD

33 B 5/9 Kishangarh, Vasant Kunj,
New Delhi 110070; Email: hello@
studiowood.co.in; Mobile:
9810631311; Website: www.
studiowood.co.in

THE GREAT EASTERN HOME

The New Great Eastern Mills, 25
to 29, Dr Ambedkar Road, Near
Rani Baug, Byculla, Mumbai
400027; Tel: (022) 23770079;
Mobile: 9869164813; Email:
info@thegreasternhome.
com; Website: www.thegreat
easternhome.com

THE WHITE TEAK COMPANY

1st Floor, A 225, New Mangalpur,
Opp Metro Pillar No 45, MG Road,
New Delhi 110030; Mobile:
703900609; Website: www.
whiteteak.com

TIMOTHY OULTON

Tarun Vadehra Interiors, D 41,
Defence Colony, New Delhi
110024; Mobile: 9990784848;
Website: www.timothyoulton.com

TRESORIE

60 A, Linking Road, Near Arya
Samaj, Mumbai 400054; Tel:
(022) 26608042/0243

VILAASITA

Website: www.vilaasita.com

WICKER WORLD

51, Mehrauli Gurugram, M G Road,
Opp Metro Pillar No P 103, Next to
Indian Oil Petrol Pump, Ghitorni,

New Delhi 110 030; Mobile:
9910193939; Website: www.
wickerworld.in

WISMA ATRIA INTERIORS

(See Swish List)

HABITAT

BRIMMING WITH BRIO
ARCHITECT AKSHAT BHATT
ARCHITECTURE DISCIPLINE
Tel: (011) 4602 8676; Email:
info@architecturediscipline.
com; Website: www.
architecturediscipline.com

STRIKINGLY SUBTLE

ARCHITECTS PRATIK
SIDDHUPURA AND
DEVANG PATEL
P&D ASSOCIATES
24, Narmada Darshan, Opp
GEB, Maktampur road,
Bharuch 392021; Mobile:
9824190530/ 9898163231;
Email: pd.associates26@
gmail.com; Website:
www.pdassociates.in

9TO5

A FUTURISTIC CUBE
INTERIOR DESIGNER
SMITA THOMAS
MULTITUDE OF SINS
Email: smitathomas@multitude
ofsins.in; Website: www.
multitudeofsins.in

OFF THE SHELF

A CUT ABOVE
ARCHITECT ANDREA MILANI
STUDIO MILANI
Tommaso Pendola, 18 53100
Siena, Italy; Tel: +39. (0)577.
226465; P I 00966650525;
Email: info@studiomilani.eu;
Website: www.studiomilani.eu
HMG STONES
1 Sankey Road, Bengaluru
560052; Mobile 9066001111;
Website: www.hmgstones.com

SPACE & SPICE

THE KUBE ROUTE
ARCHITECTS MAYUR GUJARE
AND DEVAL SHAH
SAGA DESIGN ARCHITECTS
Saga Group; A116, Synthofine
Industrial Estate, Behind
Virwani Industrial Estate, Off

Aarey Road, Goregaon (E),
Mumbai 400063; Tel: (022)
29270160; Email: sagadesign1
@gmail.com/ sagadesign
architects@gmail.com;
Website: www.saga
groupe.com
KUBE
Floor 5, Crystal Point Mall,
Azad Nagar, Link Road, Andheri
Lokhandwala, Andheri (W),
Mumbai 400035;
Mobile: 7700903020

GALLERY

AISEN

Vishal Video and Appliances
Pvt Ltd; 601, Golden Chamber,
Opp Citi Mall, Link Road,
Andheri (W), Mumbai 400053;
Website: www.aisenindia.com

ALUDECOR

Suite No 52, 5th Floor 1, R N
Mukherjee Road, Kolkata
700001; Tel: (033)
40276600; Email: info@
aludecor.com; Website: www.
aludecor.com

DURAVIT INDIA PVT LTD

61, Titanium, Near
Prahladnagar Auda
Garden, Prahladnagar,
Ahmedabad 380015;
Tel: (079) 66112338;
Fax: (079) 66112316;
Website: www.duravit.in

FANZART

Theme House, 15,
Krishnanagar Industrial Area,
Off Hosur Main Road,
Bengaluru 560029; Tel:
(080) 42929292; Email:
sales@fanzartfans.com;
Website: www.fanzart
fans.com

HAIER APPLIANCES INDIA
PVT LTD
(See High Five)

KITCHENAID

Whirlpool of India Ltd,
Whirlpool House, Plot No 40,
Sector 44, Gurugram 122002;
Website: www.kitchenaid.in

MITASHI EDUTAINMENT

PVT LTD

414 to 424, B Wing,
Bhawaeshrw Arcade, LBS
Marg, Ghatkopar (W), Mumbai
400086; Tel: (022)
45105100; Website: www.
mitashi.com

OZONE OVERSEAS

H 40, Bali Nagar, New Delhi
110015; Tel: (011) 45576677;
Email: ozone@ozone-india.
com; Website: www.ozone-
india.com

PHILIPS INDIA LTD

7, Justice Chandra Madhab
Road, Kolkata 700020;
Website: www.philips.co.in

PURESIGHT SYSTEMS

PVT LTD
Email: info@puresight.co.in;
Website: www.irobot.in

ROCA BATHROOM

PRODUCTS PVT LTD

No. 62, K G N Towers, 4th
Floor, A Wing, Eithraj Salai,
Egmore, Chennai 600105;
wWebsite: www.roca.in

SYSKA LED

Syska House, Plot No 89, 90,
91; Lane No 4, Off Airport Road,
Lohegaon, Pune 411014;
Website: www.syskaled
lights.com



آموزشگاه انعکاس منبع جدیدترین اطلاعات ، مقالات و دوره‌های آموزشی دکوراسیون داخلی